

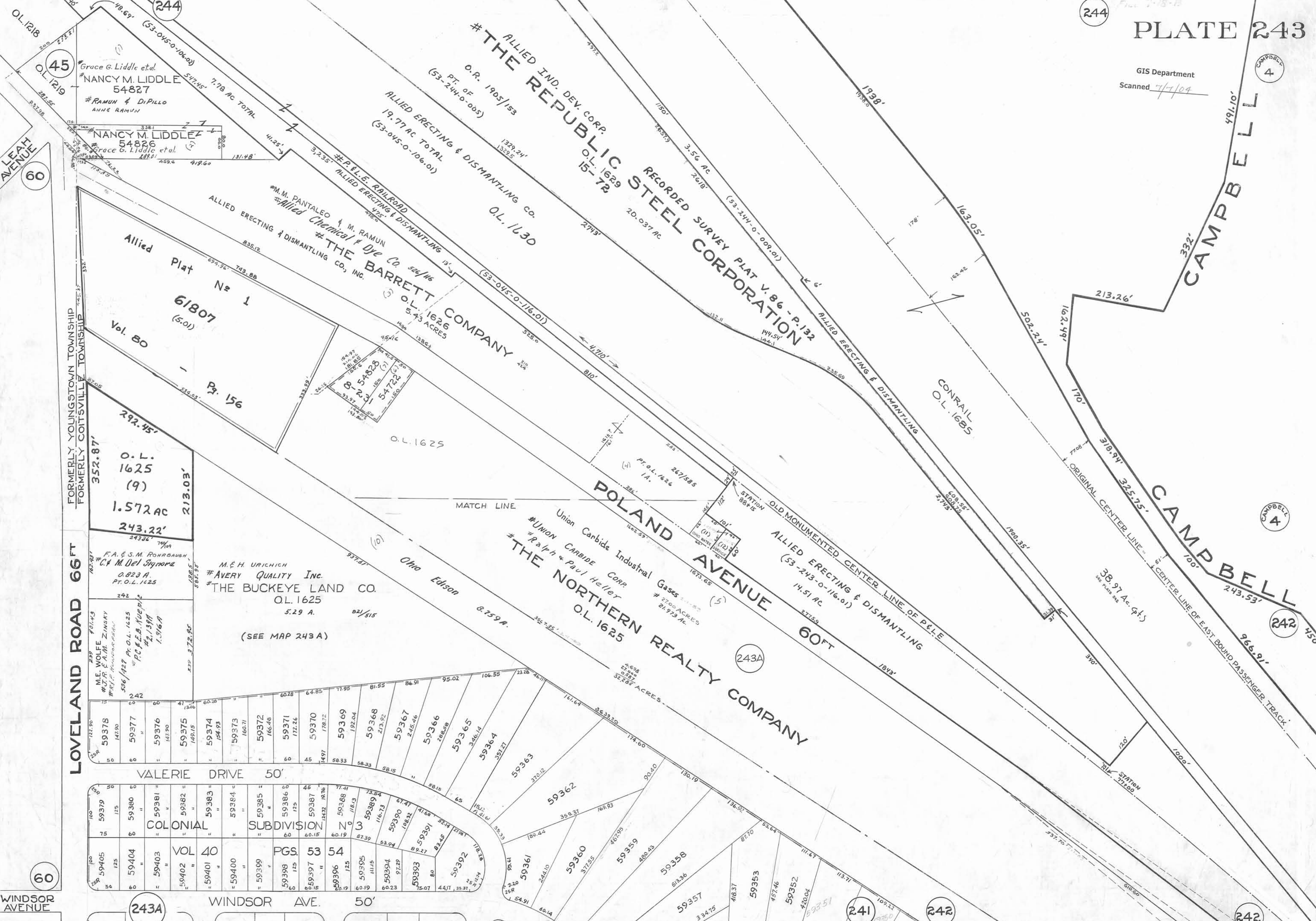
GIS Department
Scanned 7/7/04

CAMPBELL 4

CAMPBELL 4

242

242



ALLIED IND. DEV. CORP.
THE REPUBLIC STEEL CORPORATION
RECORDED SURVEY PLAT V. 86 - P. 132
O.L. 1629 15-72
20.037 AC

ALLIED ERECTING & DISMANTLING CO.
O.L. 1630
19.77 AC TOTAL
(53-045-0-106.01)

P.E.L.E. RAILROAD
ALLIED ERECTING & DISMANTLING
O.L. 1626
5.43 ACRES

THE BARRETT COMPANY
O.L. 1626
5.43 ACRES

ALLIED ERECTING & DISMANTLING
O.L. 1625
5.29 A.
02/615
(SEE MAP 243A)

AVERY QUALITY INC.
THE BUCKEYE LAND CO.
O.L. 1625
5.29 A.
02/615

Union Carbide Industrial Gases
UNION CARBIDE CORP.
Ralph & Paul Heller
THE NORTHERN REALTY COMPANY
O.L. 1625
8.759 A.

OL. 1218
OL. 1219
OL. 1218
OL. 1219
Grace G. Liddle et al.
NANCY M. LIDDLE
54827
RAMUN & DiPILLO
ANNE RAMUN

NANCY M. LIDDLE
54826
Grace G. Liddle et al.
RAMUN & DiPILLO
ANNE RAMUN

Formerly Youngstown Township
Formerly Coitsville Township
LOVELAND ROAD 66 FT

M.E. H. URICHICH
AVERY QUALITY INC.
THE BUCKEYE LAND CO.
O.L. 1625
5.29 A.
02/615
(SEE MAP 243A)

VALERIE DRIVE 50'
COLONIAL SUBDIVISION N 3
VOL 40
PGS 53 54
WINDSOR AVE. 50'

WINDSOR AVENUE
60

60

243A

241

242

242