

209

210

230

Henry 229 F. Mc Carley Plat No.1

(13.02)
61716

OL.1622

2.25
610 725.04

(13)
61715

725.04'

(13.01)
61714

Vol. 73 OL.1623 Pg. 149

725.04'

755.04'

YOUNGSTOWN AREA JEWISH FED.
The Homes, Inc.
Caroline S. Snyder 4.071 Ac.
Hubbard Estates, Inc.

(14) 782/674

755'

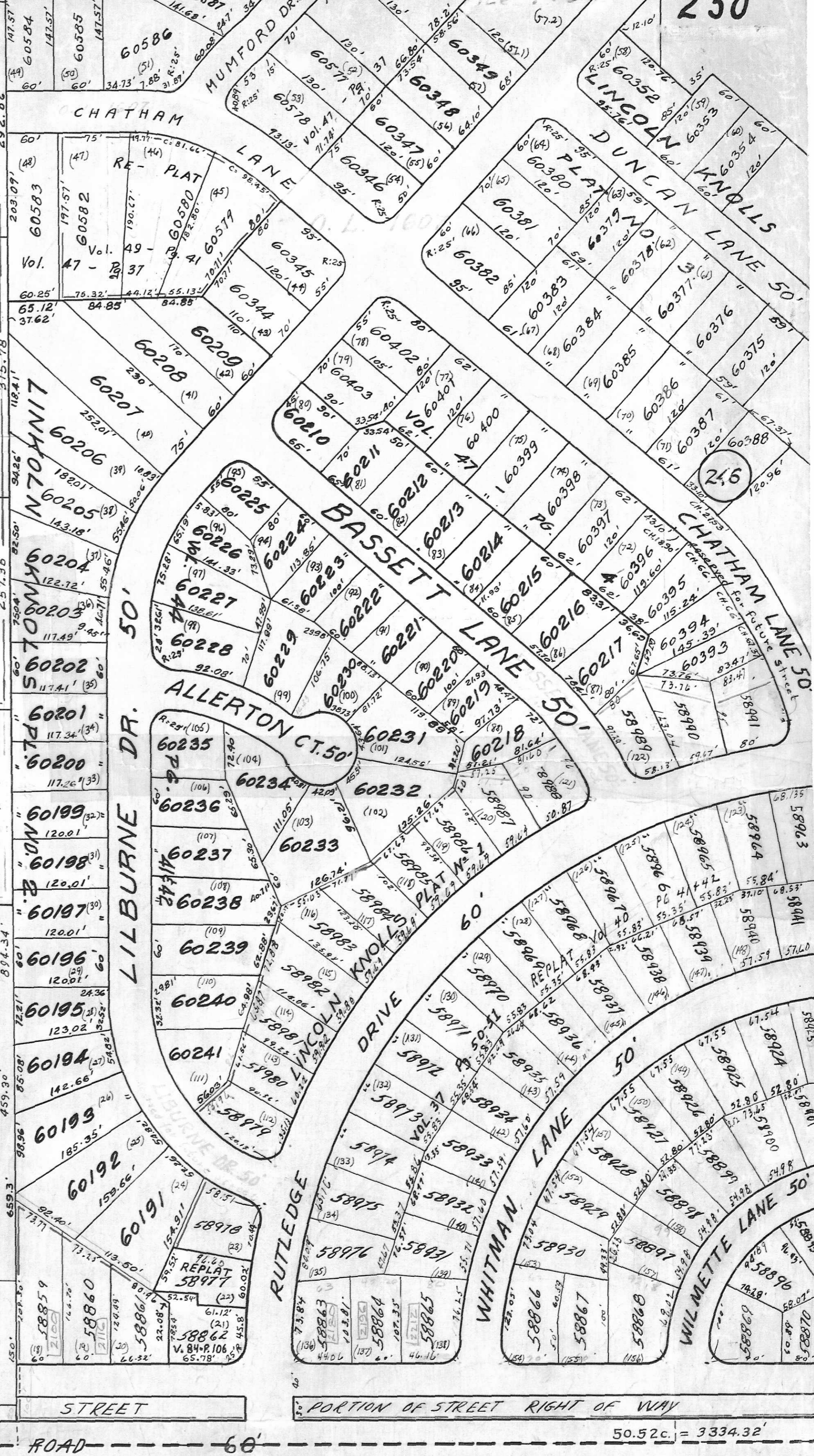
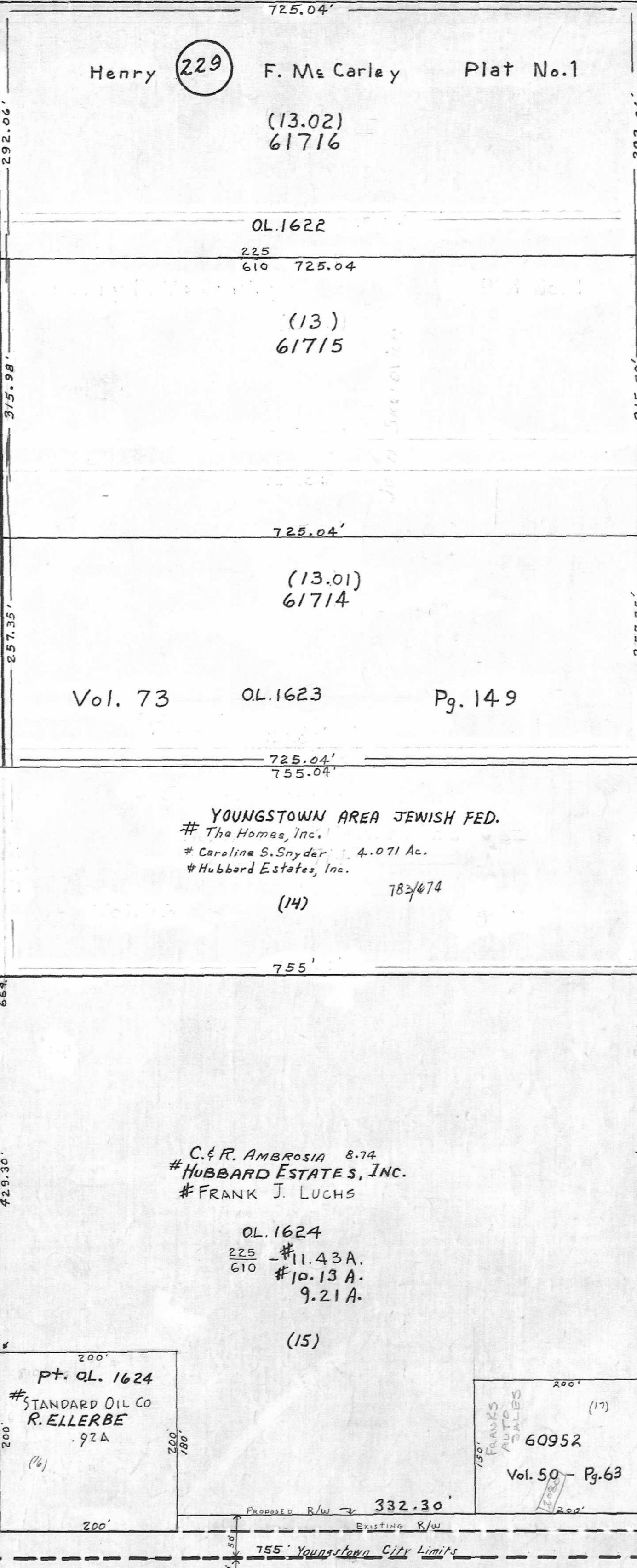
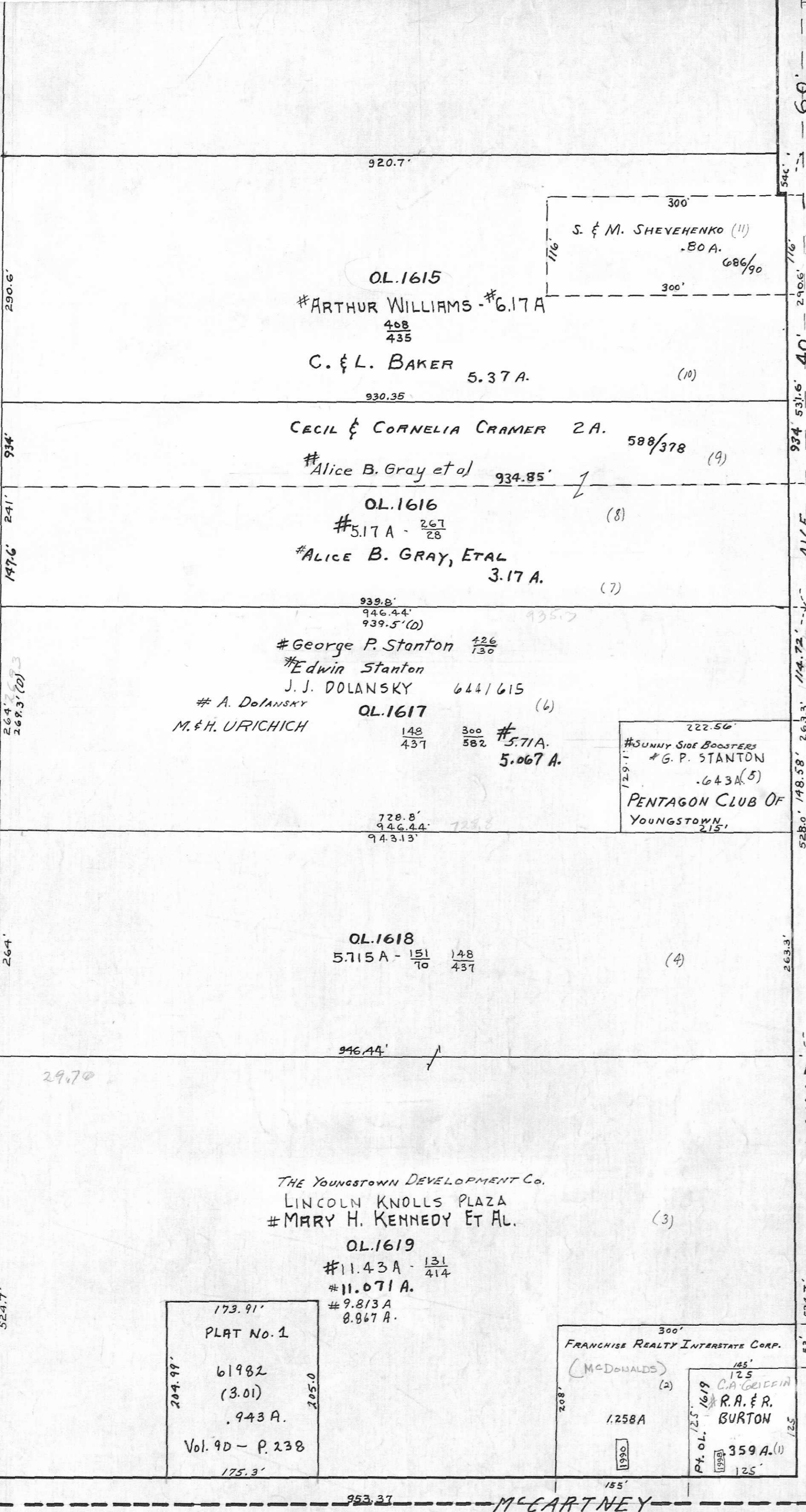
C. & R. Ambrosia 8.74
HUBBARD ESTATES, INC.
FRANK J. LUCHS

OL.1624
2.25 #11.43A.
610 #10.13A.
9.21A.

(15)

PT. OL. 1624
STANDARD OIL CO
R. ELLERBE
97A

FRANKS
PATS
60952
Vol. 50 - Pg. 63



CAMDEN AVE. 50'

LAMAR AVE. 40'

STREET PORTION OF STREET RIGHT OF WAY 50.52c. = 3334.32'

64 St. Campbell City