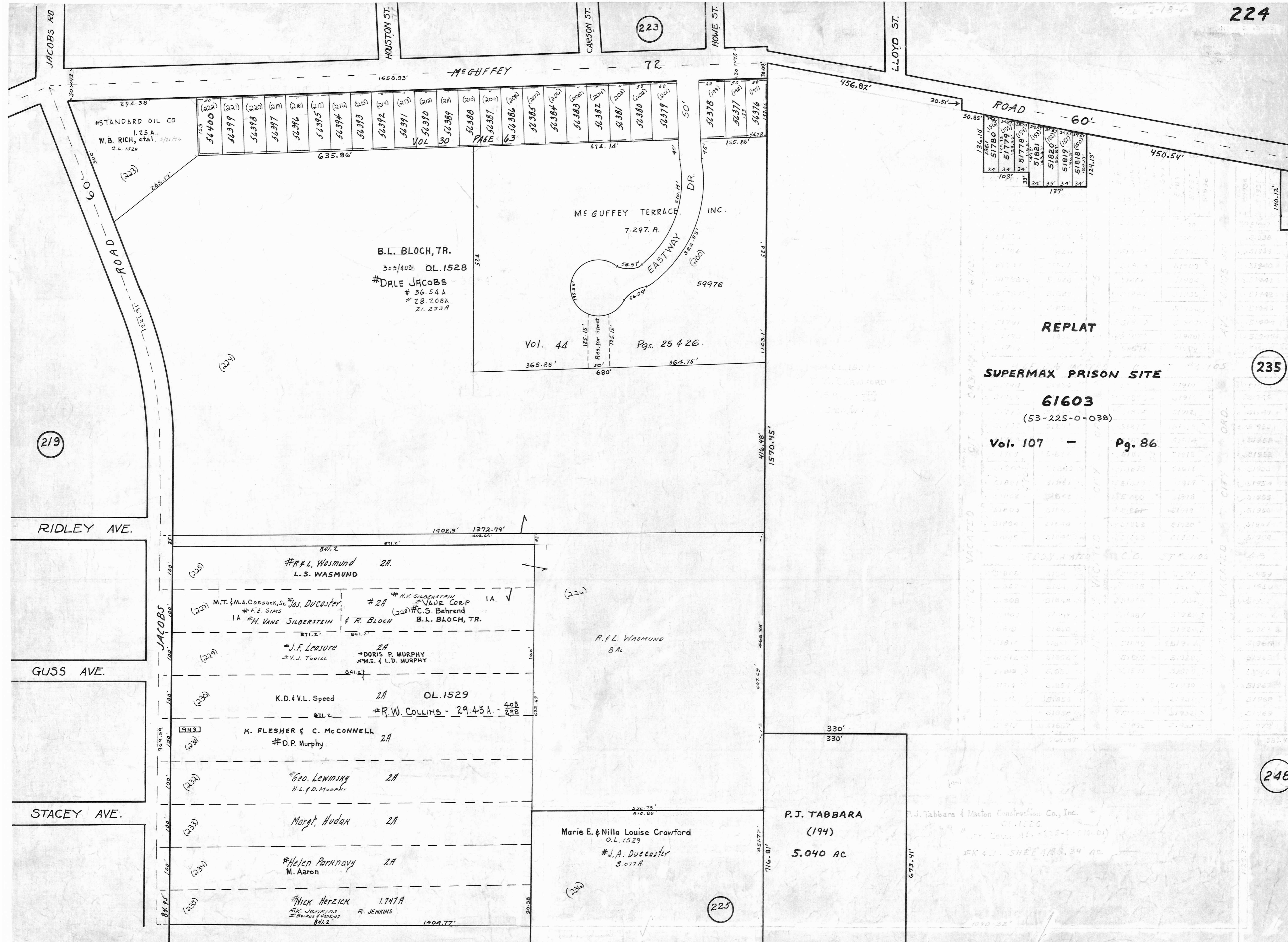


223

235

248



#STANDARD OIL CO  
I.25 A.  
W.B. RICH, et al. 3/24/74  
O.L. 1528

54400 (222)	54399 (221)	54398 (220)	54397 (219)	54396 (218)	54395 (217)	54394 (216)	54393 (215)	54392 (214)	54391 (213)	54390 (212)	54389 (211)	54388 (210)	54387 (209)	54386 (208)	54385 (207)	54384 (206)	54383 (205)	54382 (204)	54381 (203)	54380 (202)	54379 (201)
-------------	-------------	-------------	-------------	-------------	-------------	-------------	-------------	-------------	-------------	-------------	-------------	-------------	-------------	-------------	-------------	-------------	-------------	-------------	-------------	-------------	-------------

B.L. BLOCH, TR.  
303/403 OL. 1528  
#DALE JACOBS  
# 36.54 A  
# 20.208 A  
21.223 A

ME GUFFEY TERRACE INC.  
7.297 A.

Vol. 44 Pgs. 25 & 26.

51780 (19)	51779 (18)	51778 (17)	51820 (16)	51819 (15)	51818 (14)
------------	------------	------------	------------	------------	------------

REPLAT  
SUPERMAX PRISON SITE  
61603  
(53-225-0-038)  
Vol. 107 - Pg. 86

P.J. TABBARA  
(194)  
5.040 AC

Marie E. & Nilla Louise Crawford  
O.L. 1529  
#J.A. Duecoster  
3.077 A.

#R. L. Wasmund 2A  
L.S. WASMUND

M.T. & M.A. Cosseck, Sr. #Jos. Ducoster 2A  
#F.E. SIMS  
1A #H. VANE SILBERSTEIN & R. BLOCH  
#H.V. SILBERSTEIN & VANE CORP 1A  
(228) #C.S. Behrend  
B.L. BLOCH, TR.

#J.F. Leasure 2A  
#V.J. TOOILL  
#DORIS P. MURPHY  
#M.E. & L.D. MURPHY

K.D. & V.L. Speed 2A OL. 1529  
#R.W. COLLINS - 29.45 A. - 403/298

K. FLESHER & C. MCCONNELL 2A  
#D.P. Murphy

#Geo. Lewinsky 2A  
H.L. & D. MURPHY

Margt. Hudak 2A

#Helen Parkinavay 2A  
M. Aaron

#NICK HERZICK 1.747 A  
#R. JENKINS  
#BANKS & JENKINS  
8/12