

SALT SPRINGS INDUSTRIAL PARK PLAT No 1

61825
28.744 AC
(1)

61826
(2)
REPLAT

61854
(2.01)

61827
42.487 AC
(3)

CORRECTION PLAT → VOL. 84
VOL. 82

PG. 9
PG. 181

61855
(2.02)

Vol. 84 - Pg. 114

REPLAT

61872
(21.01)

REPLAT

61829
(5)

VOL. 82 - PG. 272
VOL. 101 - PG. 140

62200
(6)

61873
(20.01)

Pg. 258

Vol. 86
Vol. 87 - Pg. 188

REPLAT

62007
(42)

REPLAT

Vol. 96 - Pg. 180
61952
(41)

Vol. 92 -

- P. 144

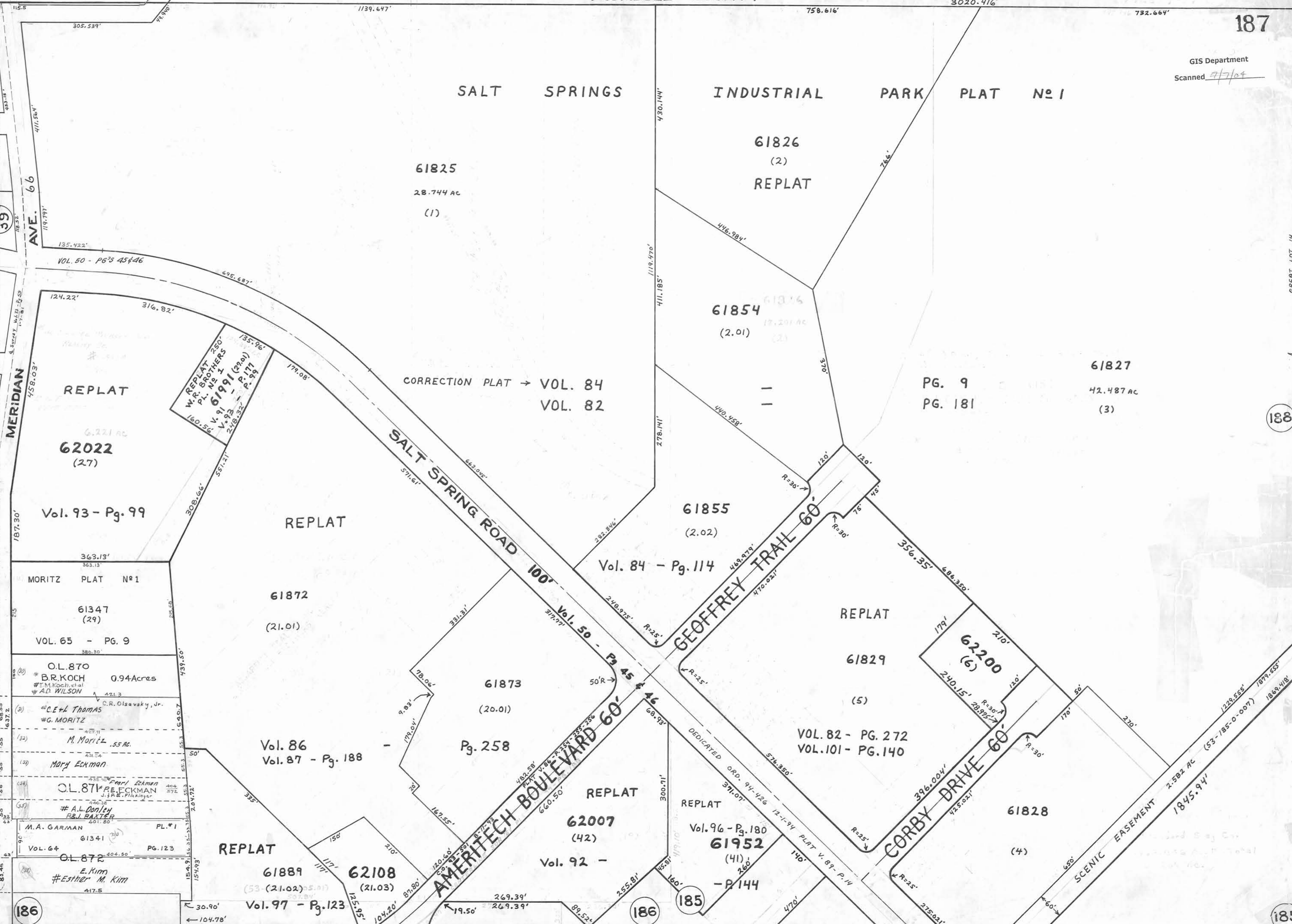
61828
(4)

REPLAT

61889
(53 - (21.02) - 5.01)

62108
(21.03)

Vol. 97 - Pg. 123



39

TOWNSHIP

MERIDIAN

AUSTINTOWN

186

186

185

188

185

GREAT LOT 14
GREAT LOT 15

SCENIC EASEMENT
2.582 AC (53-185-0-007) 1869.418
1845.94'