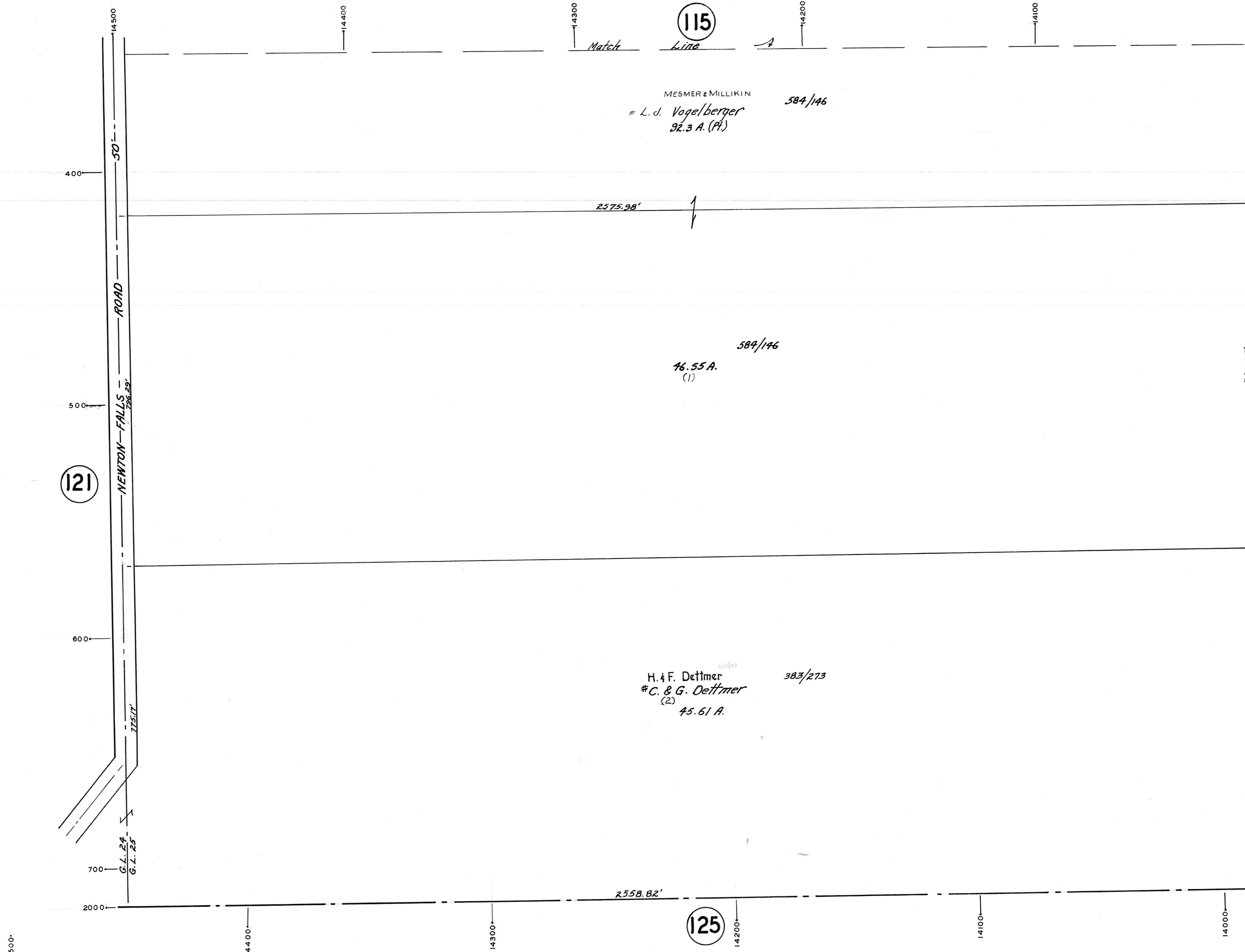


PLATE 122

SECTION G.L. No. 25  
N. SURVEY

MILTON TWP.

OFFICE OF COUNTY ENGINEER  
MAHONING COUNTY COURT HOUSE  
400 YOUNGSTOWN, OHIO



115

121

125

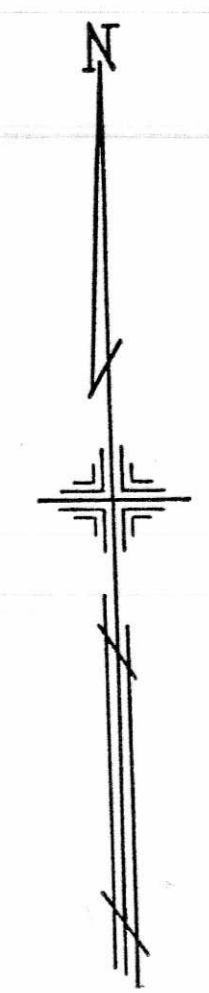
Match

Line

MESMER & MILLIKIN  
# L. J. Vogelberger  
92.3 A. (Pl.) 584/146

584/146  
46.55 A.  
(1)

H. F. Dettmer  
# C. & G. Dettmer  
(2) 45.61 A. 383/273



SCALE  
1" = 100'  
REVISED - MARCH, 1951

LEGEND

- 123 44 PLATE NUMBER
- 4700 HOUSE NUMBERING GRID
- 4170 HOUSE NUMBER

14500

14400

14300

14200

14100

14000

400

500

600

700

2000

780.95'

600

700

2000

775.17'

2575.98'

2558.82'

14500

14400

14300

14200

14100

14000

50'

786.29'

1251.17'

G.L. 24  
G.L. 25

ROAD

NEWTON-FALLS

# L. J. Vogelberger  
92.3 A. (Pl.)

# C. & G. Dettmer  
(2)