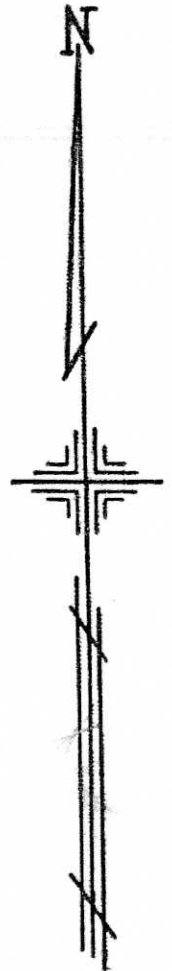


PLATE 96

G. L. No. 7&14
N. SURVEY

MILTON TWP.

OFFICE OF COUNTY ENGINEER
MAHONING COUNTY COURT HOUSE
YOUNGSTOWN, OHIO



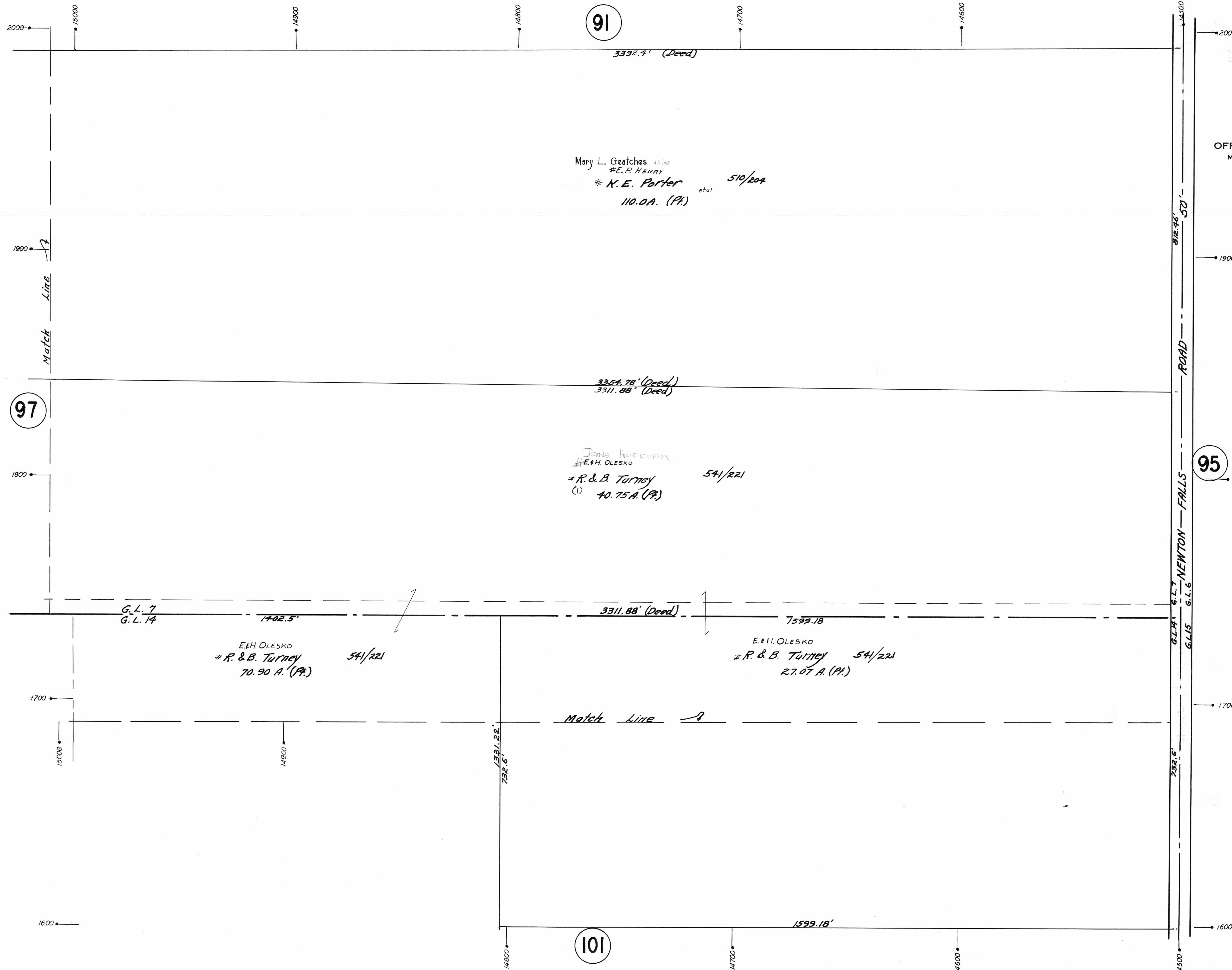
SCALE
1" = 100'

LEGEND

(44) PLATE NUMBER

→ 4700 HOUSE NUMBERING GRID

4700 HOUSE NUMBER



91

97

95

101

Match Line

Match Line

ROAD
FALLS
NEWTON

