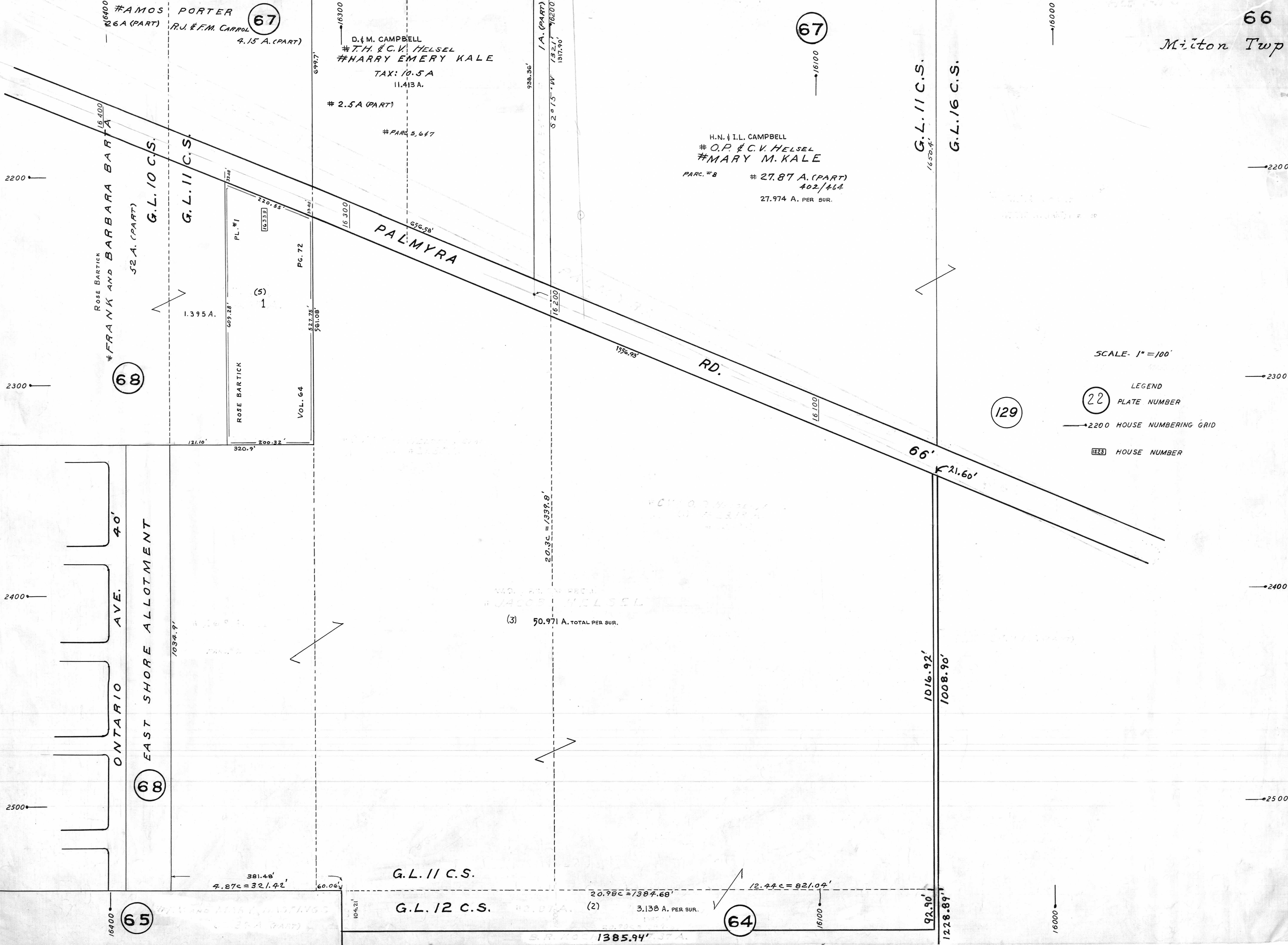


SCALE - 1" = 100'

- LEGEND
- (22) PLATE NUMBER
  - 2200 HOUSE NUMBERING GRID
  - [123] HOUSE NUMBER



# AMOS PORTER  
# 6A (PART)  
R.U. & F.M. CARROL  
4.15 A. (PART)

D. & M. CAMPBELL  
# T.H. & C.V. HELSEL  
# HARRY EMERY KALE  
TAX: 10.5 A  
11.413 A.  
# 2.5 A (PART)  
# PARC. 3, 647

H.N. & I.L. CAMPBELL  
# O.P. & C.V. HELSEL  
# MARY M. KALE  
PARC. # 8  
# 27.87 A. (PART)  
402/464  
27.974 A. PER SUR.

JACOB HELSEL  
(3) 50.971 A. TOTAL PER SUR.

ONTARIO AVE. 40'  
EAST SHORE ALLOTMENT

PALMYRA RD.

G.L. 11 C.S.  
G.L. 16 C.S.

G.L. 11 C.S.

G.L. 12 C.S.

(68)

(65)

(67)

(129)

(64)

ROSE BARTICK  
PL. #1  
PG. 72  
VOL. 64  
1.395 A.

381.48'  
4.87c = 321.42'

20.98c = 1307.68'  
12.44c = 821.04'  
(2) 3.138 A. PER SUR.

1385.94' 37A.

2200

2300

2400

2500

2200

2300

2400

2500