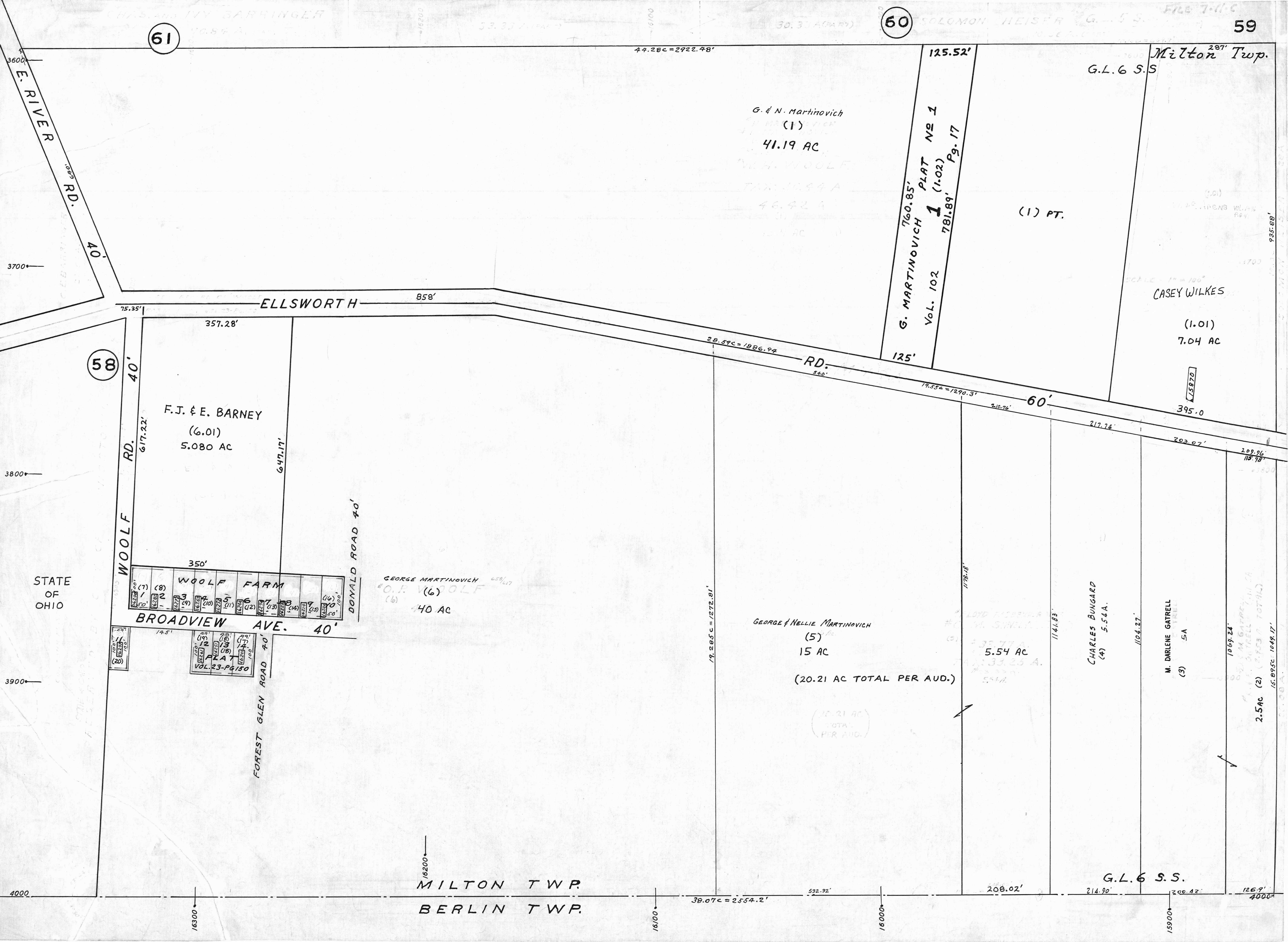


61

60

59



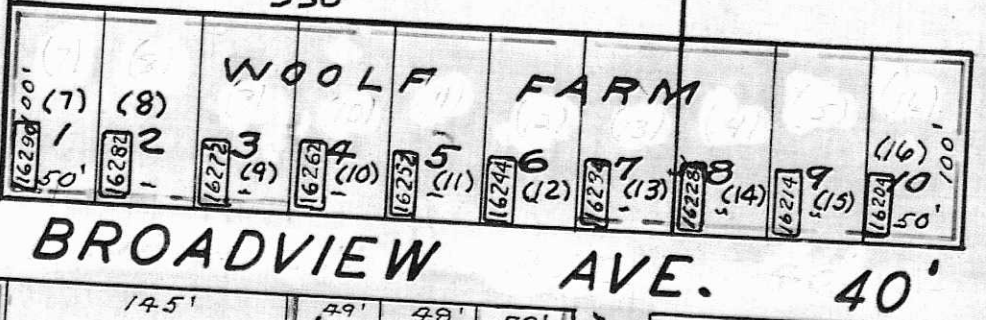
E. RIVER RD.
40'

ELLSWORTH RD.
858'

58

F.J. & E. BARNEY
(6.01)
5.080 AC

WOOLF RD.
40'



DONALD ROAD 40'

GEORGE MARTINOVICH
O.P. (6) WOLF
(6)
40 AC

GEORGE & NELLIE MARTINOVICH
(5)
15 AC
(20.21 AC TOTAL PER AUD.)

G. MARTINOVICH
VOL. 102
760.85' PLAT NO 1
1 (1.02) Pg. 17
781.89'

G. & N. Martinovich
(1)
41.19 AC

G.L.6 S.S.

Milton Twp.

(1) PT.

CASEY WILKES
(1.01)
7.04 AC

395.0

CHARLES BUNGARD
(4) 5.54A.

M. DARLENE GATRELL
(3) 5A

G.L.6 S.S.

MILTON TWP.
BERLIN TWP.

2.5AC (2)