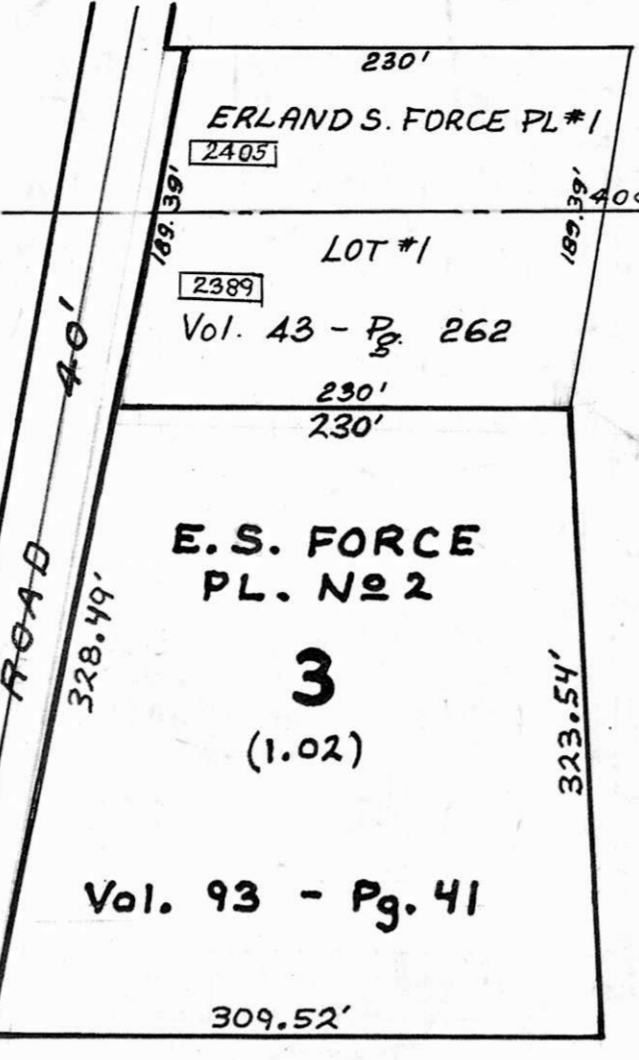


REVISED - MAY 1971
SCALE - 1" = 100'

22

G.L.1 N.S.
G.L.10 N.S.



E. S. FORCE, ETAL
(1) → #50 AC → 47.774 AC
(1.01) → 15 AC

40.07c. = 2674.66'
2443.41 (SUBST)

E.M.F.R.M. BRYNER
40 Ac.
(2)

#109.05 A (PART) #99.05

27.9c = 1841.40'
#112c = 2713.92'

13.22c = 872.52'

ME CARTNEY AND YOST

27

28

PORTAGE COUNTY
MAHONING COUNTY

MILTON

NEWTON

DOMINIC
PRECURATO
PL. No 1

1
(3)

Vol. 84
Pg. 222

HOLLWAY
MARY

25

MITH AND HUGHS

8.05c = 5190.7'

673.89'
15.27c = 1007.82'

2100

18300

18200

18100

18000

2400

2300

2200

2100

18300

18200

18100

18000

17900