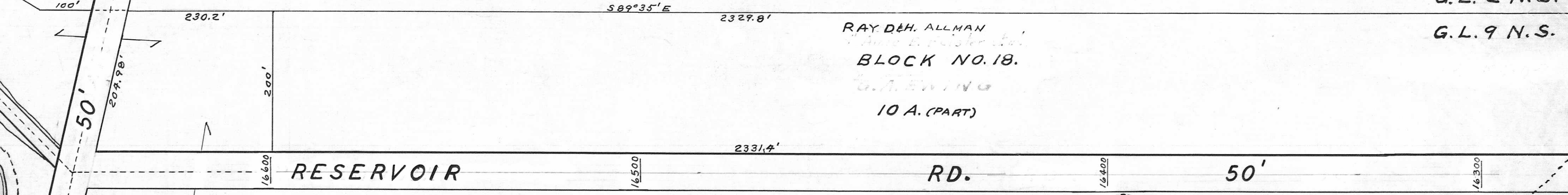
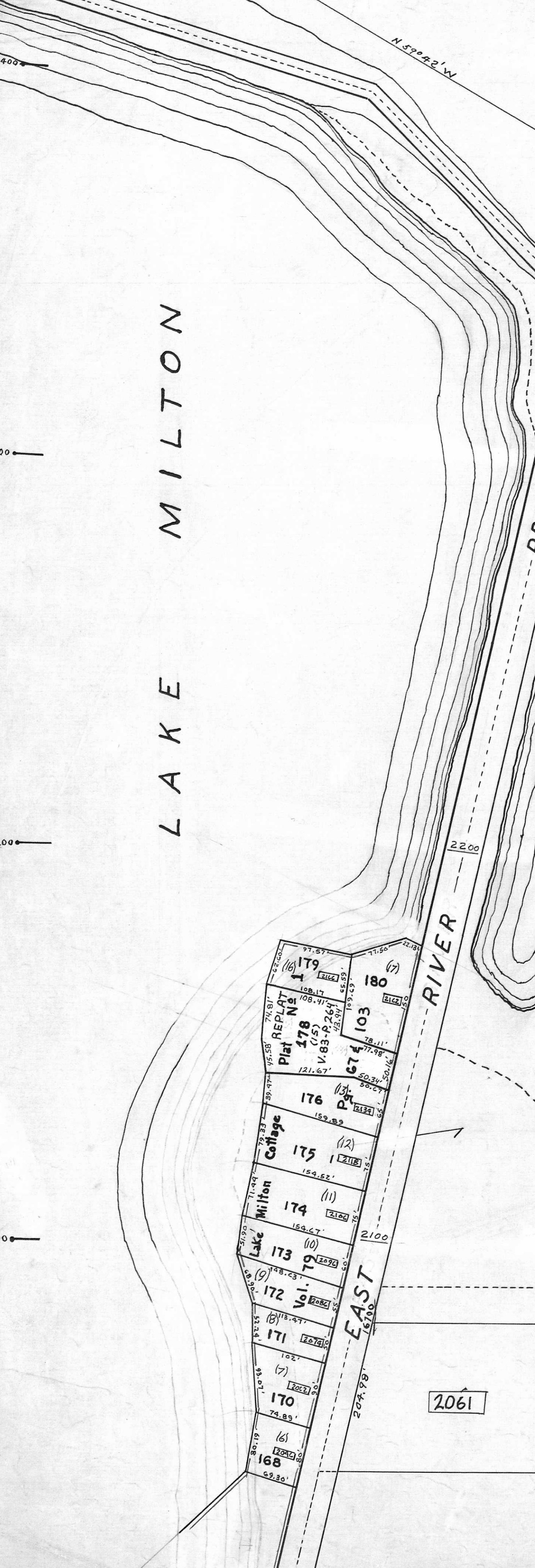


RAY D. ALLMAN, ET AL.
G.A. EWING

16

RAY D. & H. ALLMAN
BLOCK NO. 18.
G.A. EWING
10 A. (PART)

LAKE MILTON



RESERVOIR

RD.

50'

RESERVED

BY

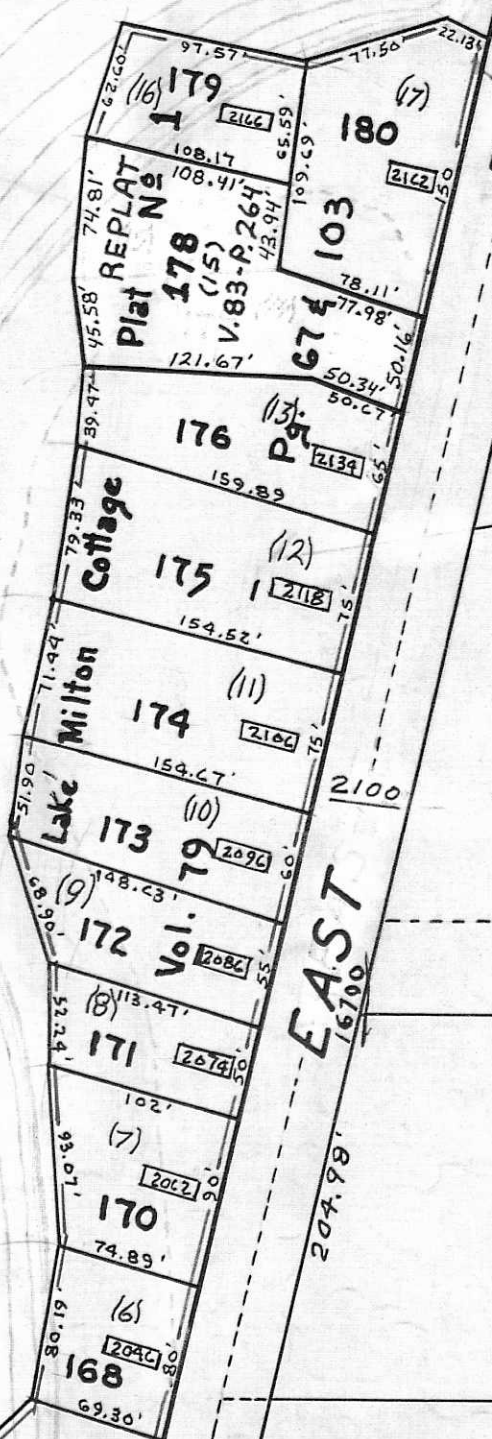
CONTOUR, EL. 955'

CONTOUR, EL. 950'

CONTOUR, EL. 955'

YOUNGSTOWN

12



CITY OF
(51-007-A-001)

BLOCK NO. 14
Jo Ann MAINE & BROWN
(1) 6.751 A.
W. Zielinski

10

PHILLIP A. MINOR

BLOCK NO. 15.
CITY OF YOUNGSTOWN
34,184 A. (PART)