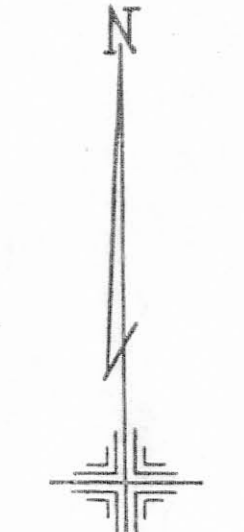


50

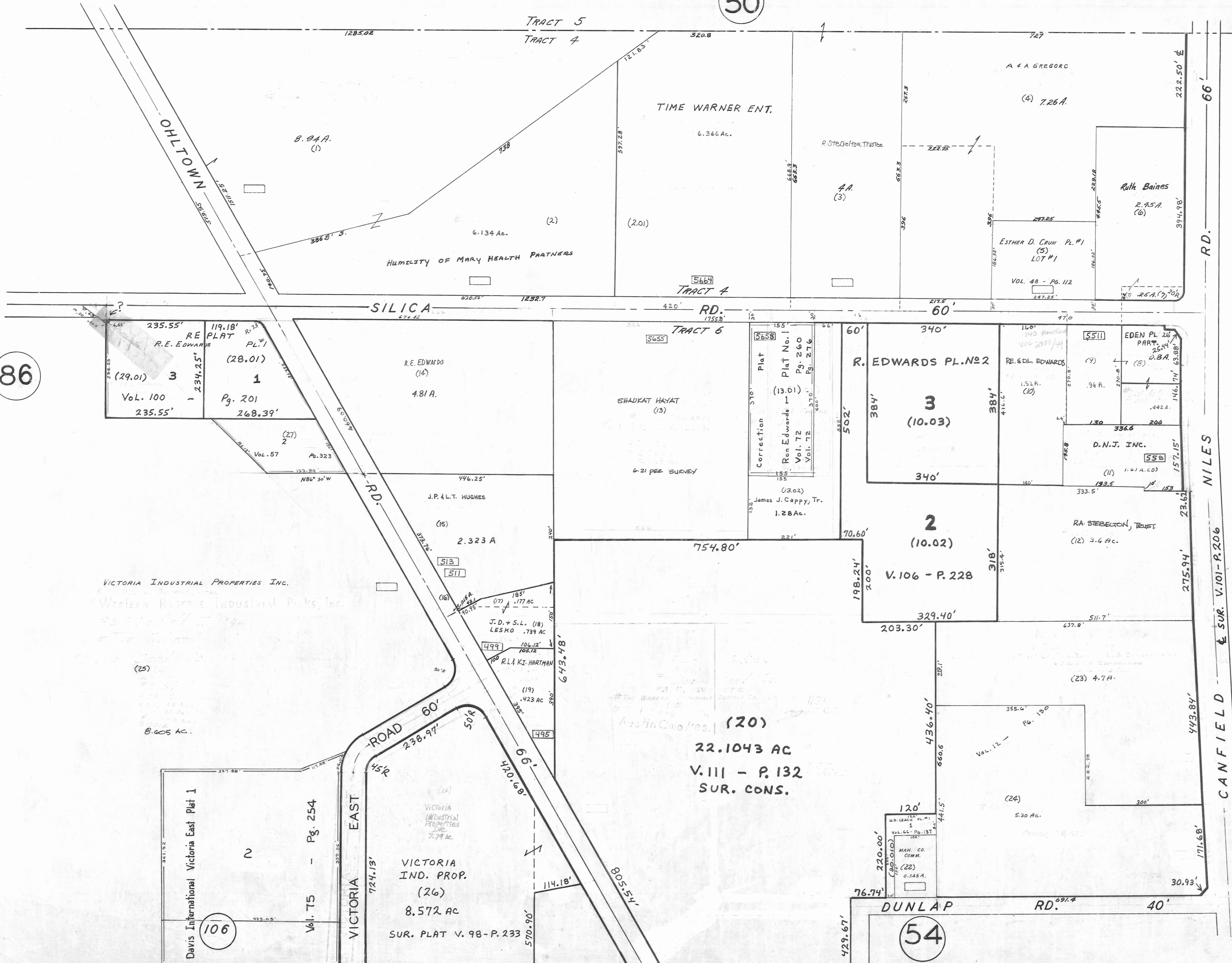
91



SCALE  
100' = 1"

83

NILES RD. & SUR. V. 101-P. 206  
CANFIELD RD.



86

106

54

VICTORIA INDUSTRIAL PROPERTIES INC.  
Western Reserve Industrial Parks, Inc.  
8.605 AC.

(20)  
22.1043 AC  
V. 111 - P. 132  
SUR. CONS.

VICTORIA  
IND. PROP.  
(26)  
8.572 AC  
SUR. PLAT V. 98 - P. 233

Davis International Victoria East Plat 1  
Vol. 75 - Pg. 254

MAH. CO. COMM.  
(22)  
0.345 A.

EDEN PL. 26  
PART.  
D.B.A.

D.N.J. INC.  
(11)  
1.61 A. (CD)

R. EDWARDS PL. NO. 2  
3  
(10.03)

V. 106 - P. 228  
2  
(10.02)

RE PLAT  
R.E. EDWARDS  
PL. #1  
(28.01)  
Pg. 201  
268.39'

Correction Plat  
Plat No. 1  
Pg. 260  
Pg. 276  
Ron Edwards  
Vol. 72  
Vol. 72

SHADKAT HAYAT  
(13)  
6-21 PEE SURVEY

R.E. EDWARDS  
(14)  
4.81 A.

J.P. & L.T. HUGHES  
(15)  
2.323 A

J.D. & S.L. (18)  
LESKO .739 AC

R.L. & K.I. HARTMAN  
(19)  
423 AC

VICTORIA  
IND. PROPERTIES  
INC.  
7.79 AC.

ESTHER D. CRUM PL. #1  
(5)  
LOT #1  
VOL. 48 - P. 112

Ruth Baines  
2.45 A.  
(6)  
394.98'

A & A GREGOR  
(4) 7.26 A.

B. 94 A.  
(1)

HUMILITY OF MARY HEALTH PARTNERS  
6.134 Ac. (2)

TIME WARNER ENT.  
6.366 Ac. (2.01)

A.A.  
(3)

OHLTOWN

SILICA RD.

RD.

ROAD 60'

VICTORIA EAST

DUNLAP RD.

RD.

NILES

& SUR. V. 101-P. 206

CANFIELD