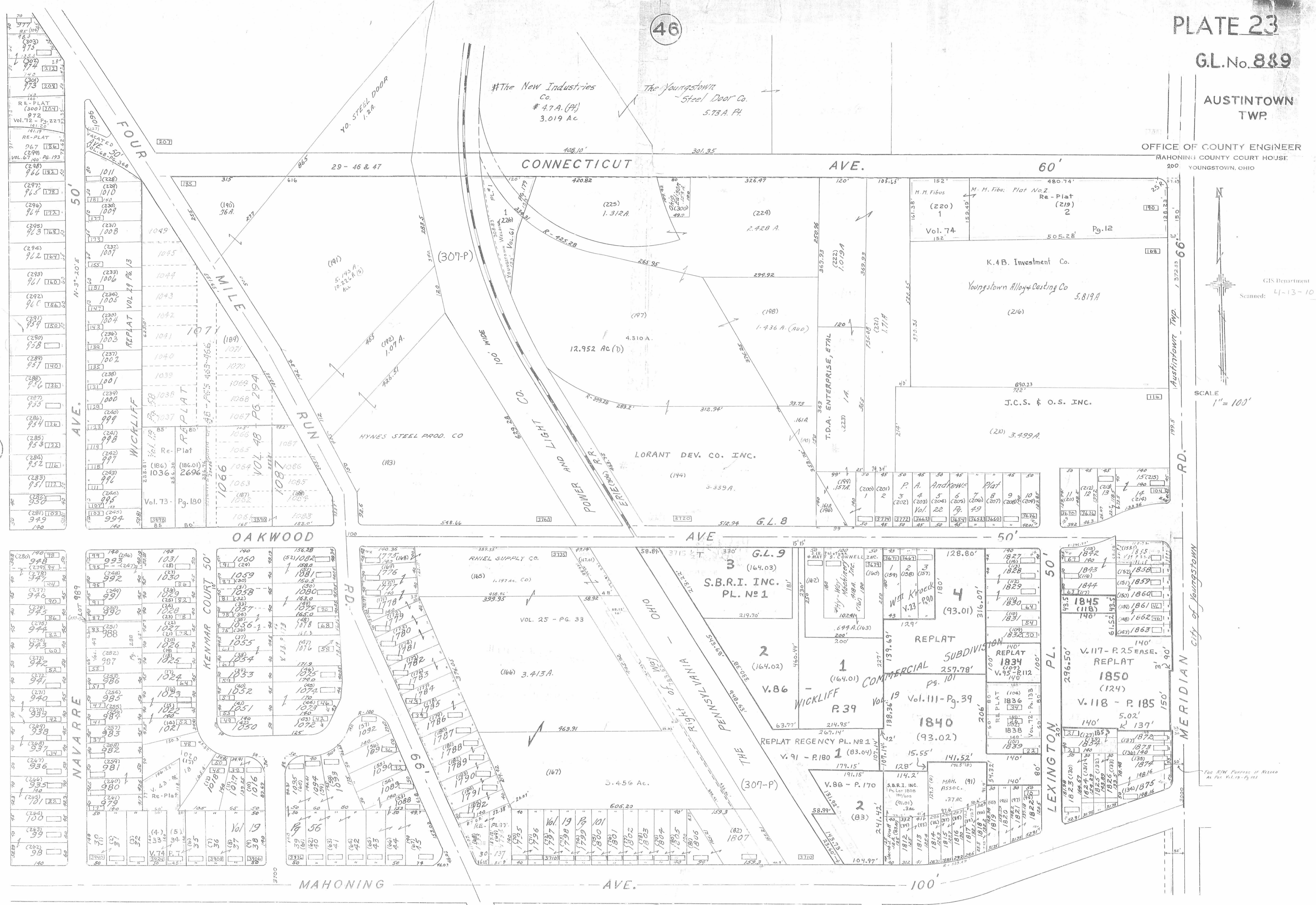


GIS Department
Scanned: 4-13-10

46



#The New Industries Co.
4.7 A. (Pl.)
3.019 Ac

The Youngstown Steel Door Co.
5.73 A. Pl.

FOUR MILE RUN

CONNECTICUT AVE. 60'

OAKWOOD AVE

MAHONING AVE 100'

NAVARE

KENMAR COURT

10

CITY OF YOUNGSTOWN

MERIDIAN RD.

For R/W Purpose if Needed
As Per Vol. 19 - Pg. 101