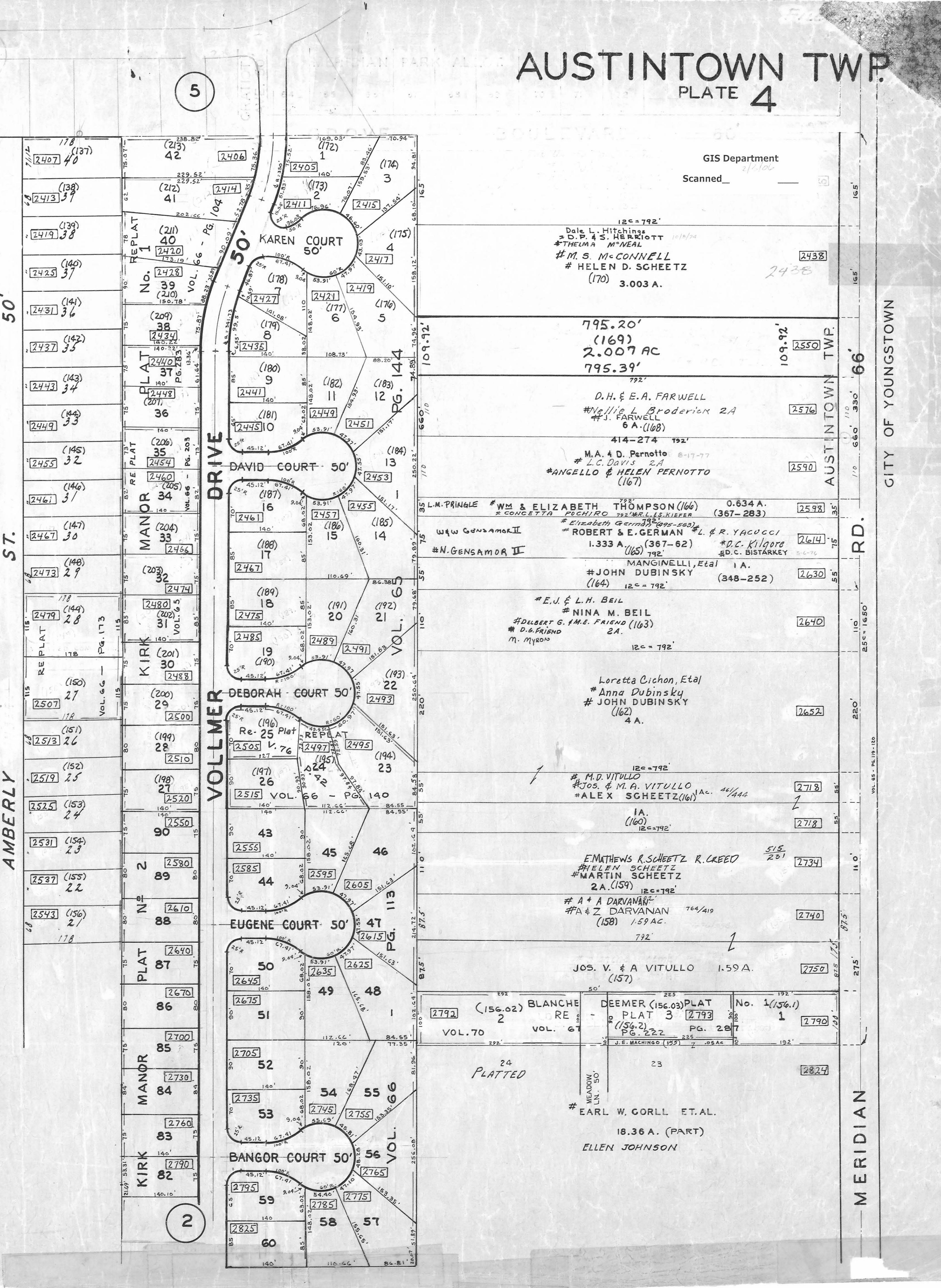
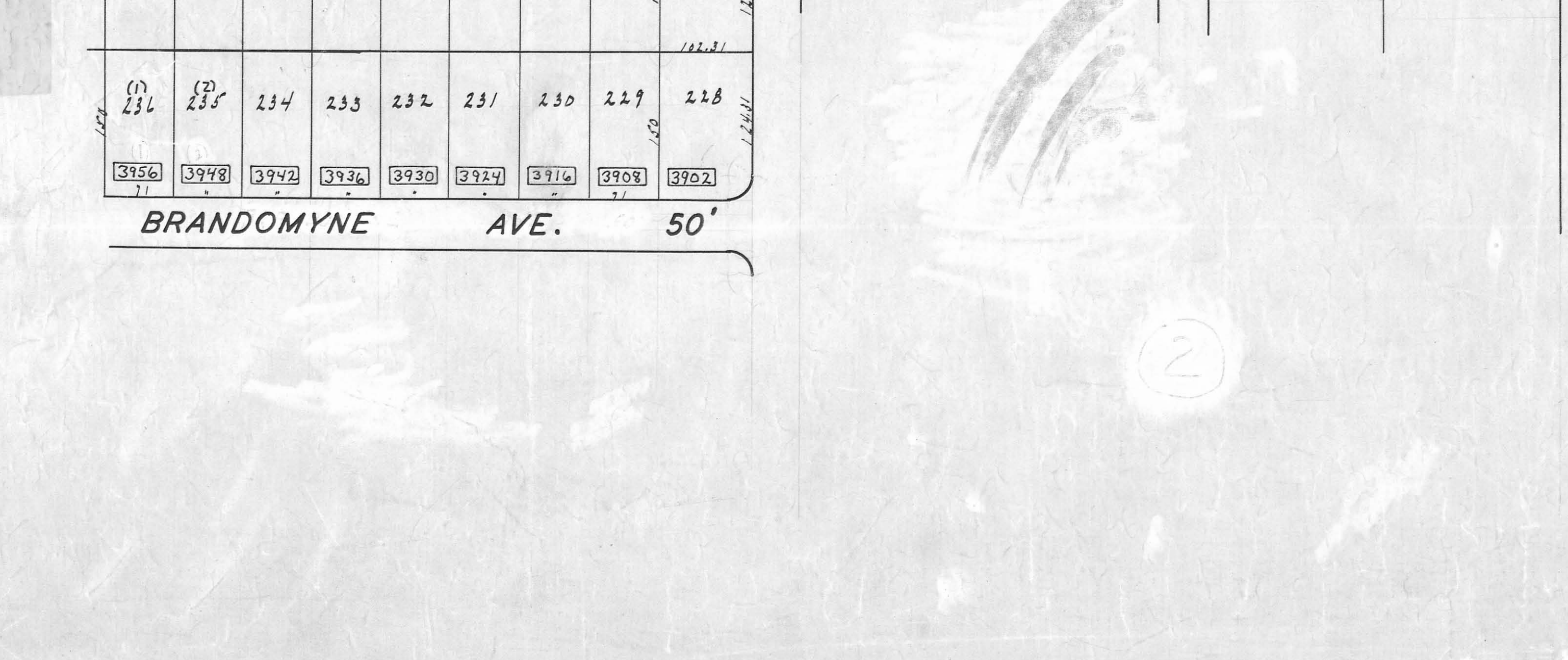
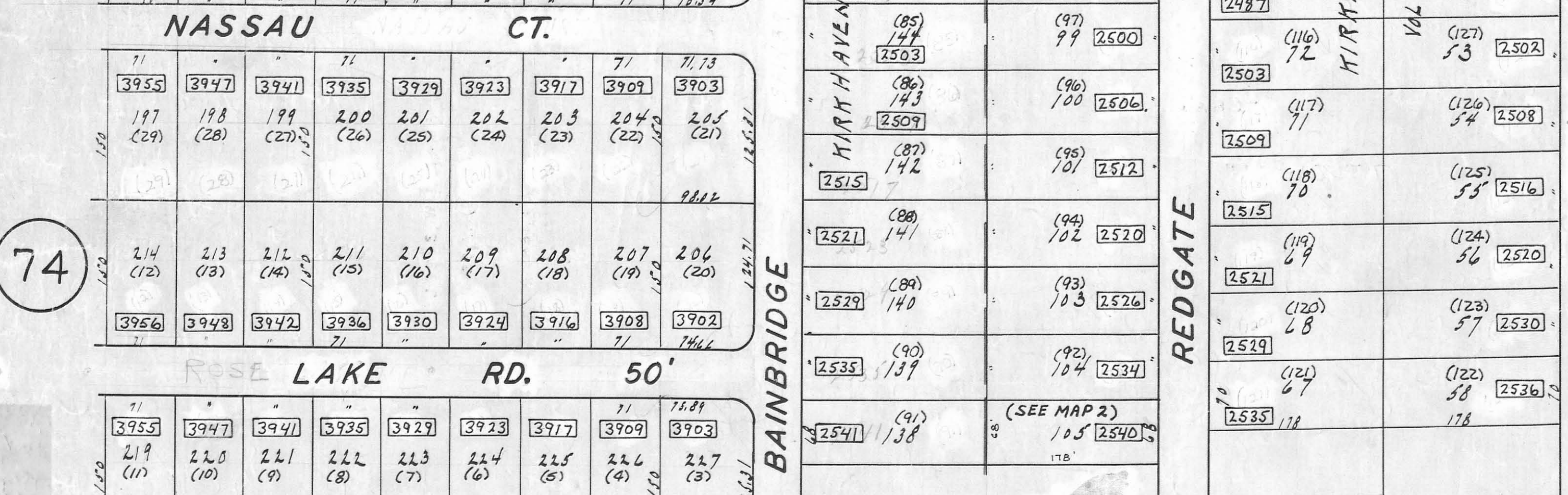
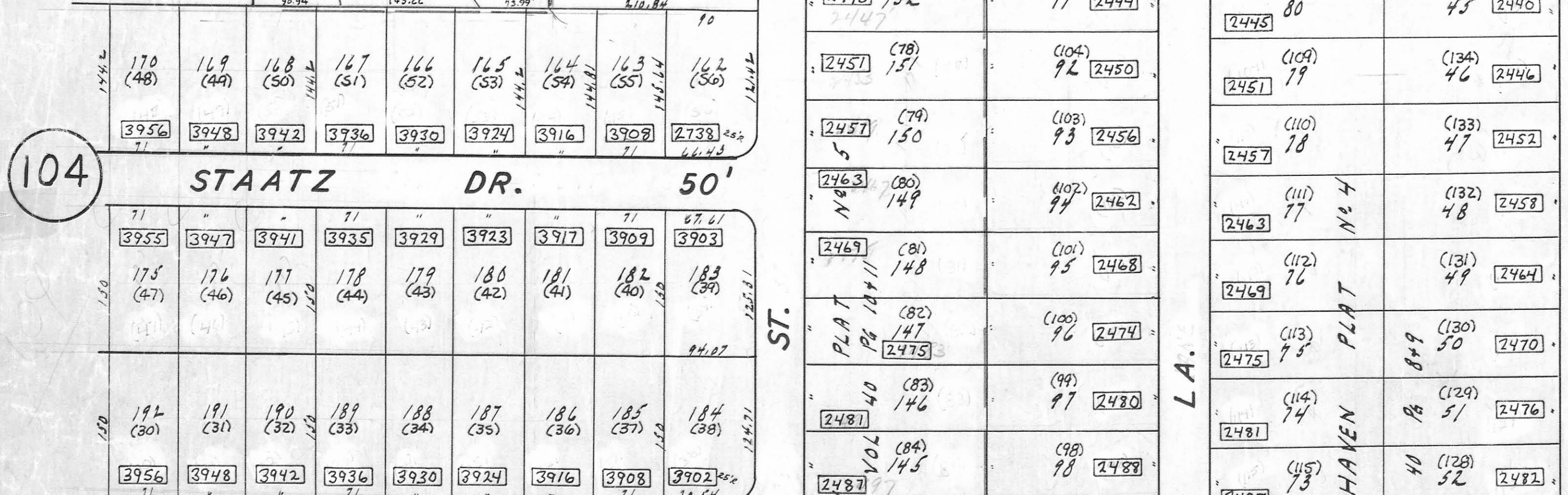
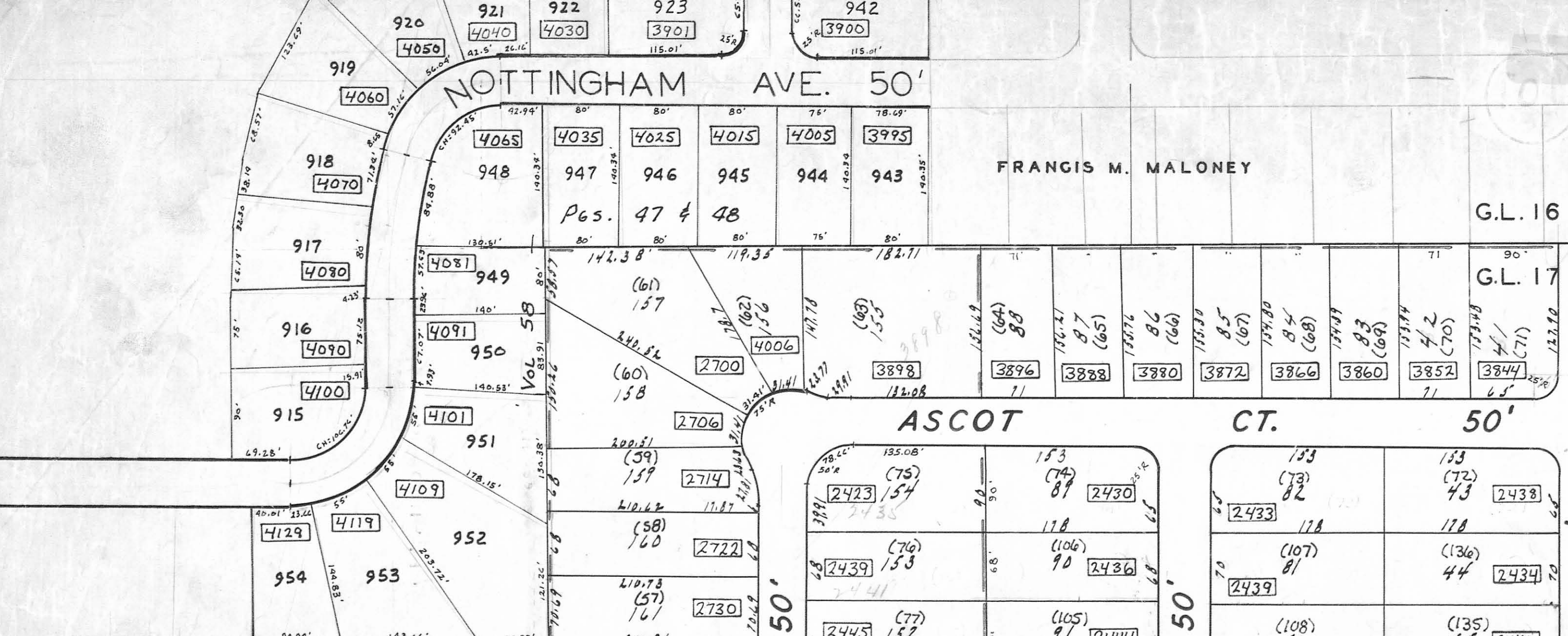


# AUSTINTOWN TWP.

## PLATE 4

GIS Department  
Scanned



CITY OF YOUNGSTOWN

104

74

5

2

2

2438  
Dale L. Hitchings  
D.P. & S. HERRIOTT  
#THELMA McNEAL  
#M.S. McCONNELL  
#HELEN D. SCHEETZ  
(170) 3.003 A.

2438  
795.20'  
(169)  
2.007 AC  
795.39'

2576  
D.H. & E.A. FARWELL  
#Vellie L. Broderick 2A  
#J. FARWELL  
6 A. (168)

2590  
414-274 192'  
M.A. & D. Pernotto 6-17-77  
#L.C. DAVIS 2A  
#ANGELLO & HELEN PERNOTTO  
(167)

2598  
L.M. PRINGLE #WM & ELIZABETH THOMPSON (166) 0.634 A.  
#CONCETTA PECHIRO 722 MR. L.S. KIEBER (367-283)

2614  
W.W. GENSAMOR II  
#ROBERT & E. GERMAN #L. & R. YACUCCI  
1.333 A. (165) (367-62) #D.C. Kilgore  
#N. GENSAMOR II #D.C. BISTARKEY

2630  
MANGINELLI, Etal 1 A.  
#JOHN DUBINSKY (348-252) (164) 12- = 792'

2640  
#E.J. & L.H. BEIL  
#NINA M. BEIL  
#ALBERT G. & M.E. FRIEND (163) 2A.  
#D.G. FRIEND  
M. MYRON

2652  
Loretta Cichon, Etal  
#Anna Dubinsky  
#JOHN DUBINSKY  
(162) 4 A.

2718  
12- = 792'  
#M.D. VITULLO  
#JOS. & M.A. VITULLO  
#ALEX SCHEETZ (161) AC. 4 1/4

2718  
1A.  
(160) 12- = 792'

2734  
E. MATHEWS R. SCHEETZ R. CREED  
#HELEN SCHEETZ  
#MARTIN SCHEETZ  
2A. (159) 12- = 792'

2740  
#A & A DARVANARZ  
#FA & Z DARVANARZ 764/410  
(158) 1.59 AC.

2750  
JOS. V. & A VITULLO 1.59 A.  
(157)

2790  
24  
PLATTED  
#EARL W. GORLL ET.AL.  
18.36 A. (PART)  
ELLEN JOHNSON