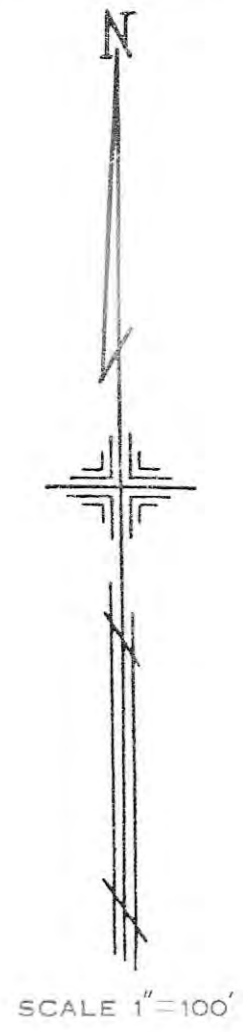


LOWELLVILLE VILLAGE

OFFICE OF COUNTY ENGINEER
940 BEARS DEN ROAD
YOUNGSTOWN, OHIO

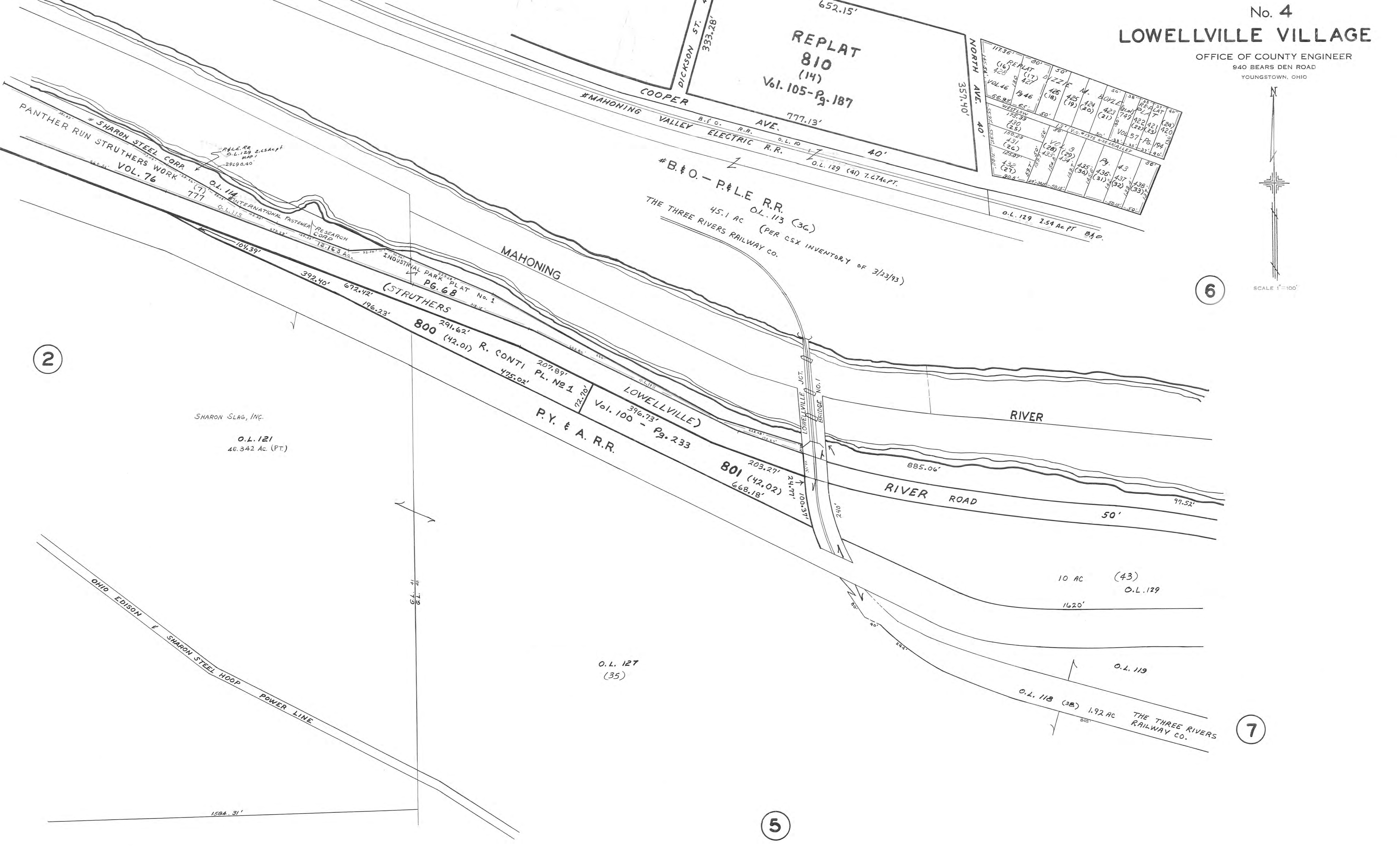


6

7

5

2



REPLAT
810
(14)
Vol. 105-Pg. 187

117.36'	30°	50'	50'	38'	33'	37'	30'
(16) REPLAT 428		(17) 427	WIZZIE	N.	50'	38'	33'
Vol. 46	65'	428 (18)	425 (19)	424 (20)	423 (21)	422 (22)	421 (23)
56.92'	65'	175.39 (25)	150.23 (26)	130.23 (27)	125.07 (28)	135.07 (29)	135.07 (30)
		131.31 (31)	131.31 (32)	131.31 (33)	131.31 (34)	131.31 (35)	131.31 (36)
		131.31 (37)	131.31 (38)	131.31 (39)	131.31 (40)	131.31 (41)	131.31 (42)

COOPER
DICKSON ST.
333.28'

MAHONING VALLEY ELECTRIC R.R.
777.13'

#B. & O. - P. & L. R.R.
45.1 AC
O.L. 113 (36)
THE THREE RIVERS RAILWAY CO.
(PER CSX INVENTORY OF 3/13/93)

MAHONING

(STRUTHERS)
PG. 68
INDUSTRIAL PARK PLAT No. 1

R. CONTI
PL. NO 1
Vol. 100 - Pg. 233
LOWELLVILLE
P.Y. & A. R.R.

801 (42.02)
668.18'

RIVER

RIVER ROAD

SHARON SLAG, INC.
O.L. 121
46.342 AC. (PT.)

O.L. 127
(35)

10 AC (43)
O.L. 129
1620'

O.L. 119
O.L. 118 (3B)
1.92 AC
THE THREE RIVERS RAILWAY CO.

OHIO EDISON & SHARON STEEL HOOP POWER LINE

1594.31'