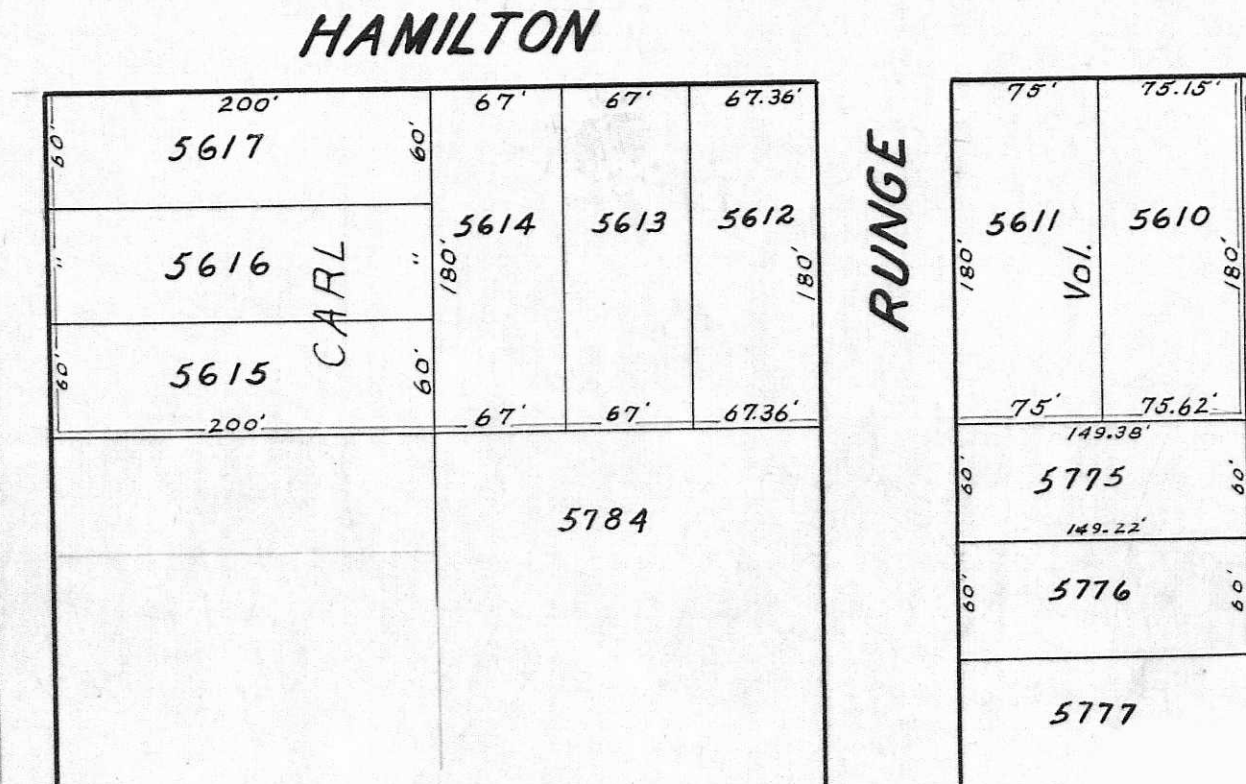
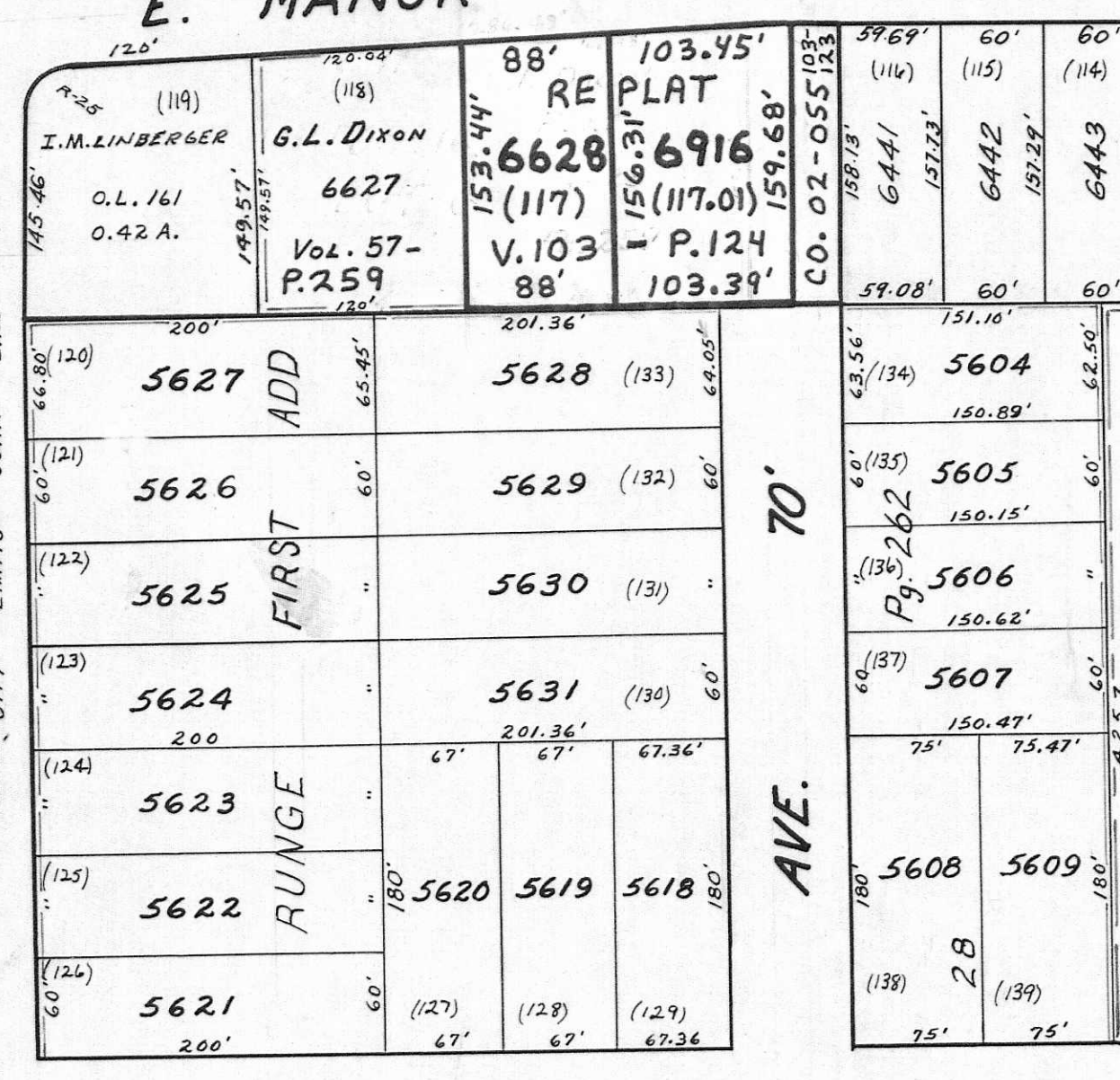
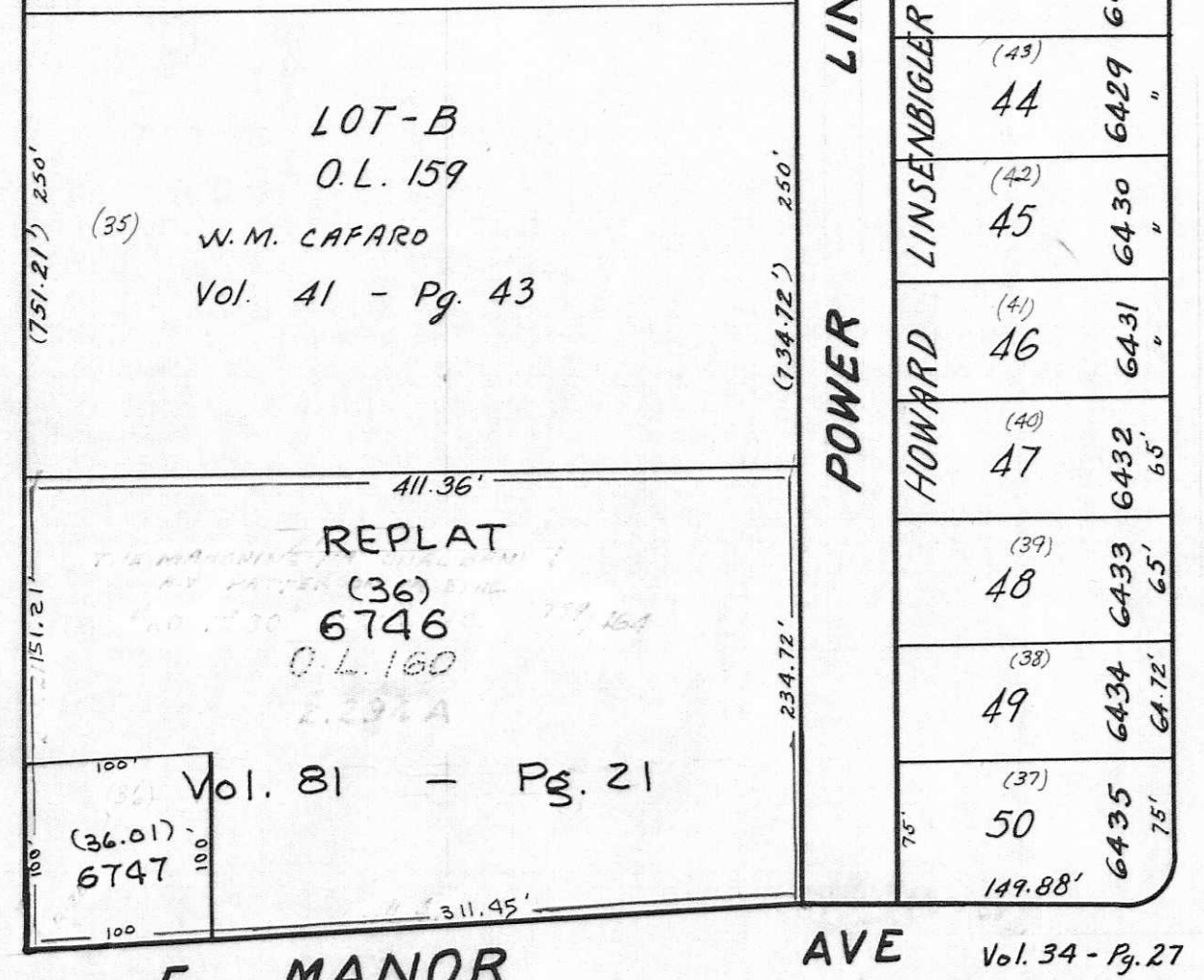
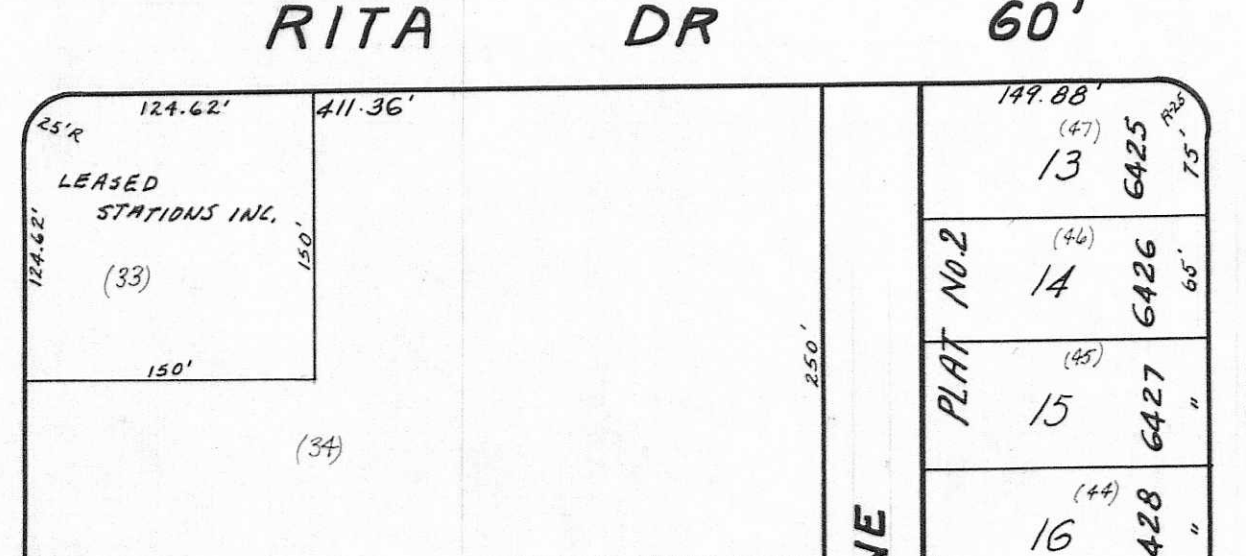
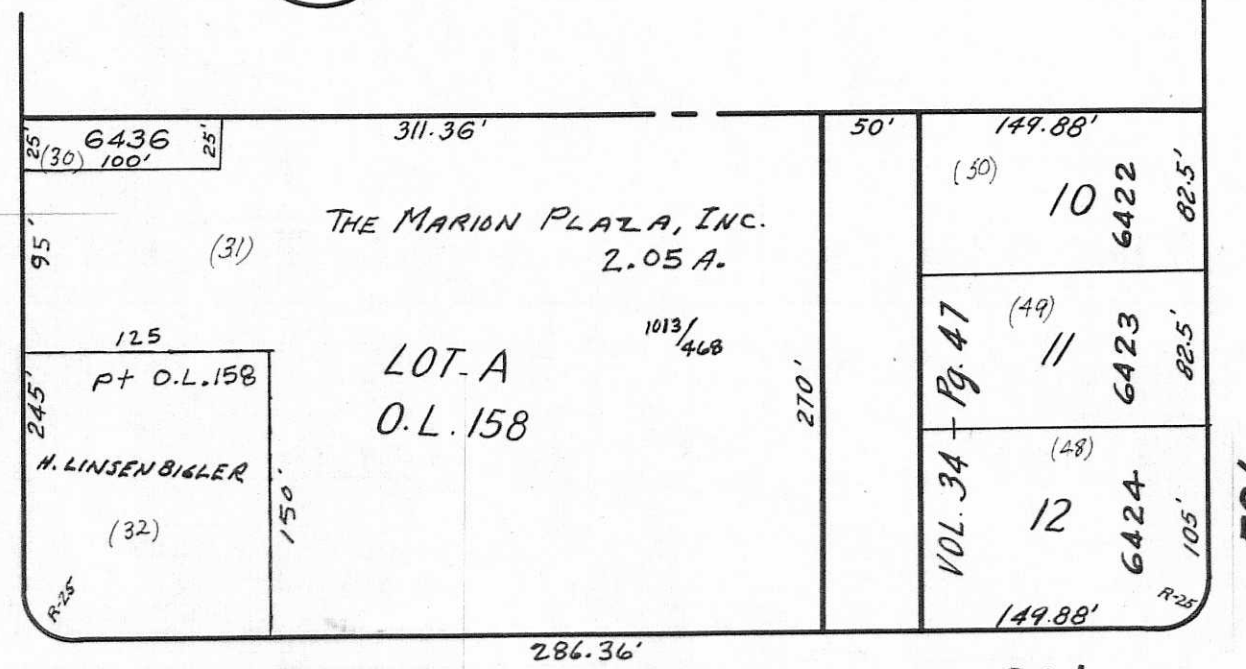
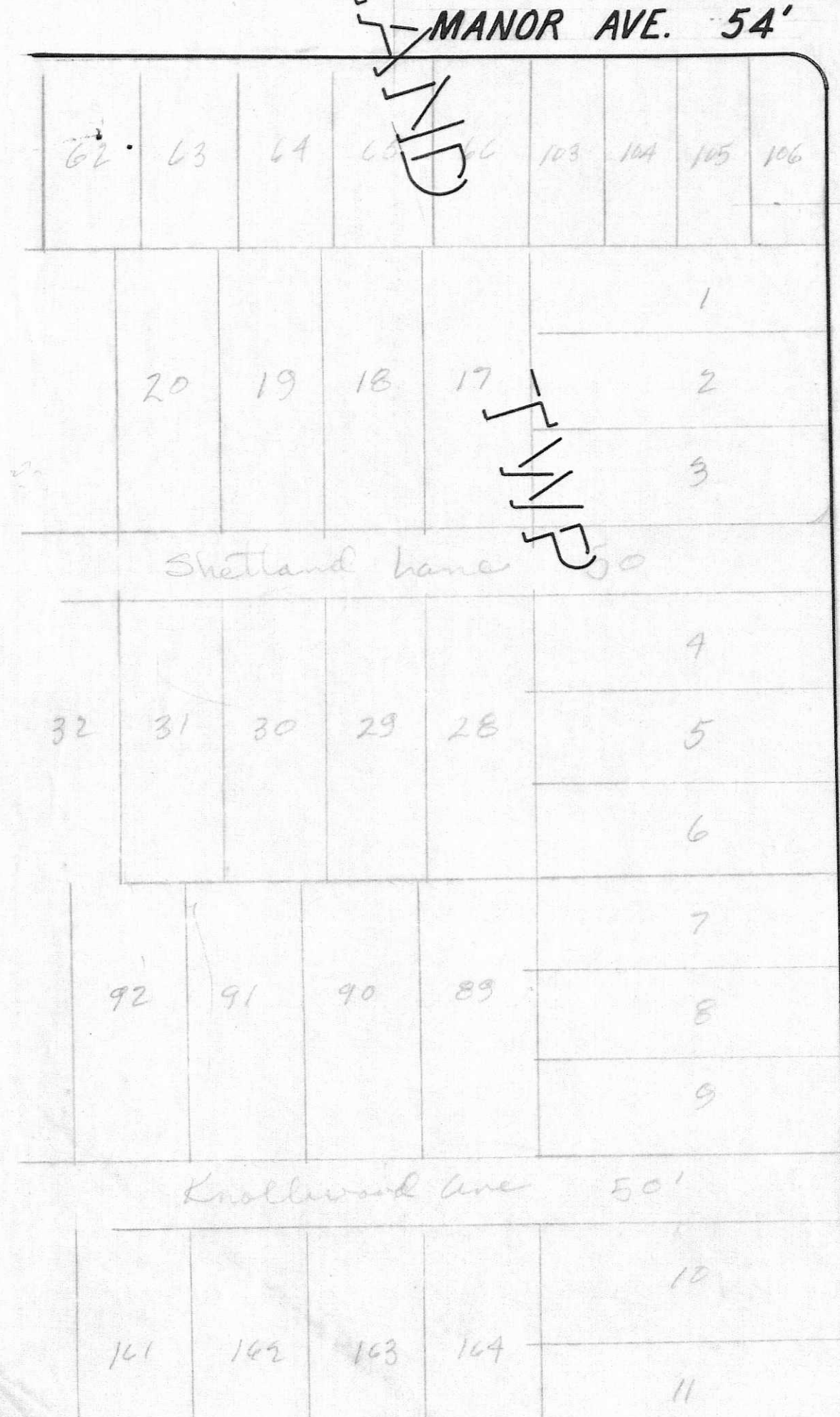
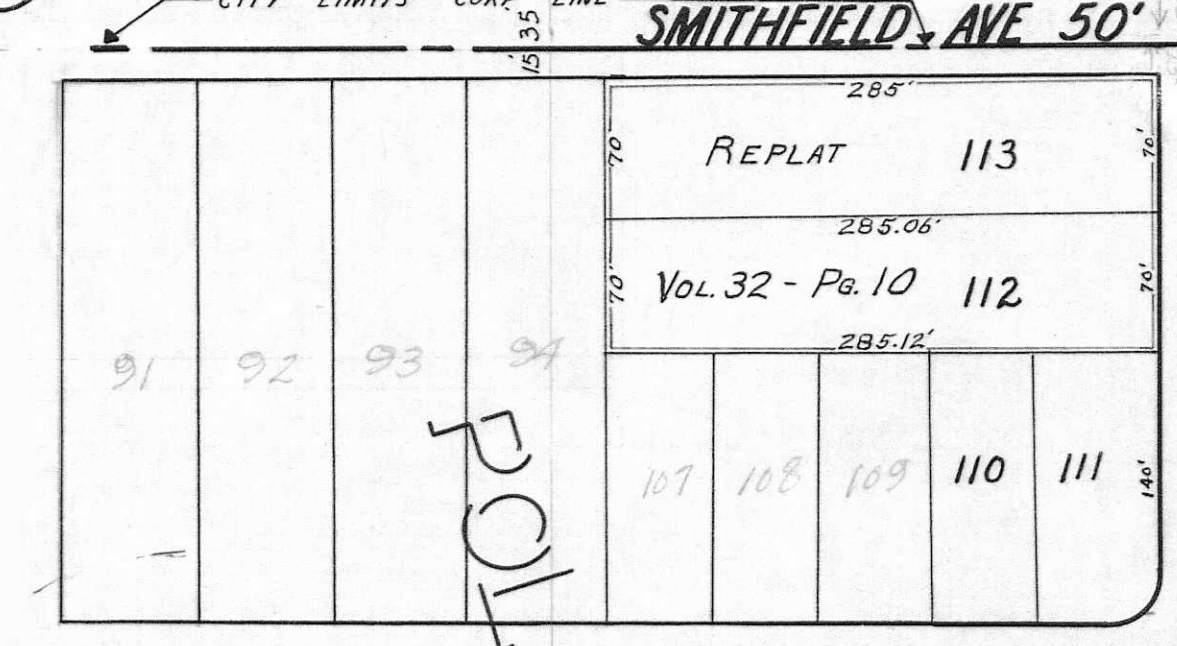
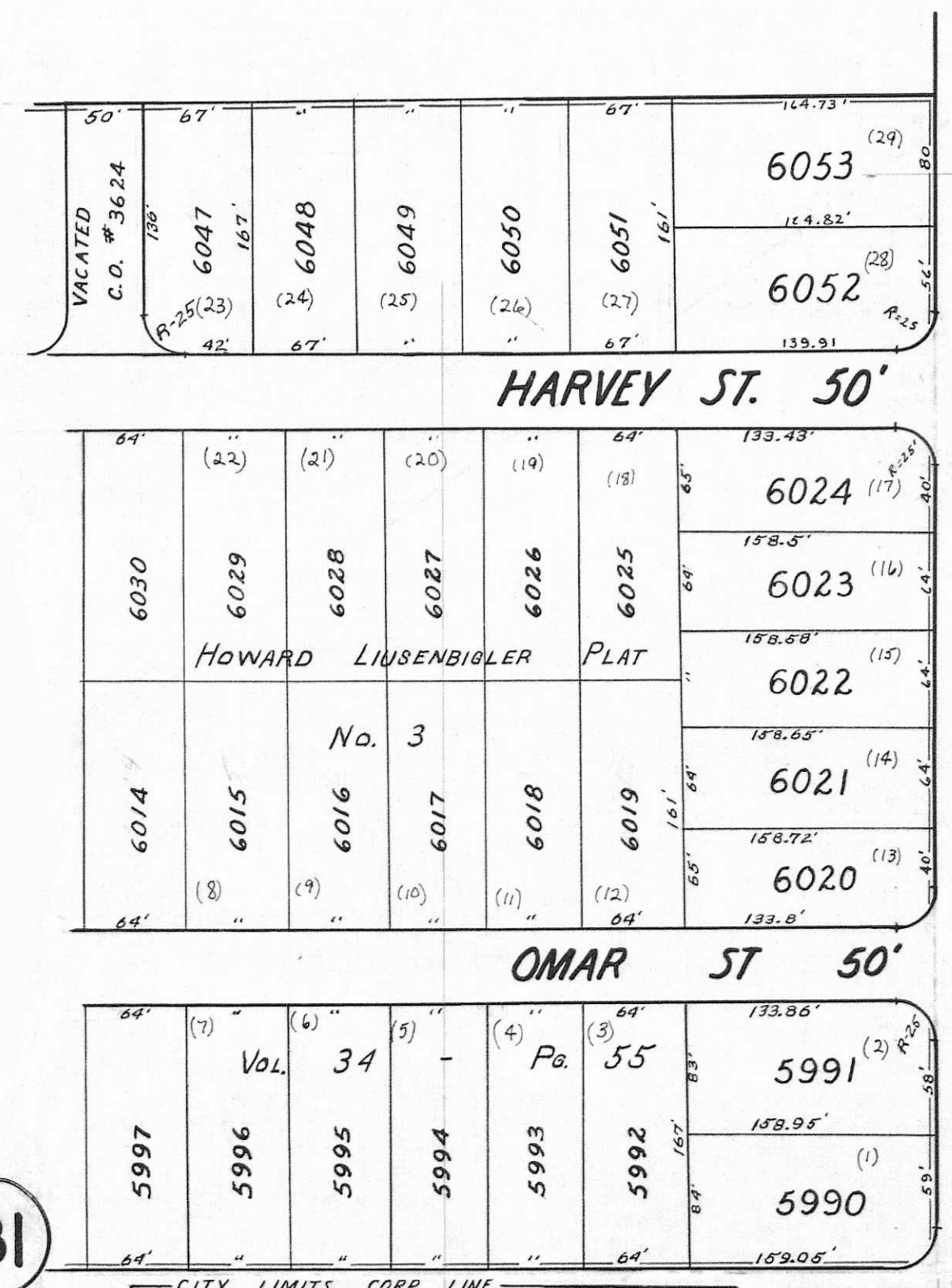


14

13

25

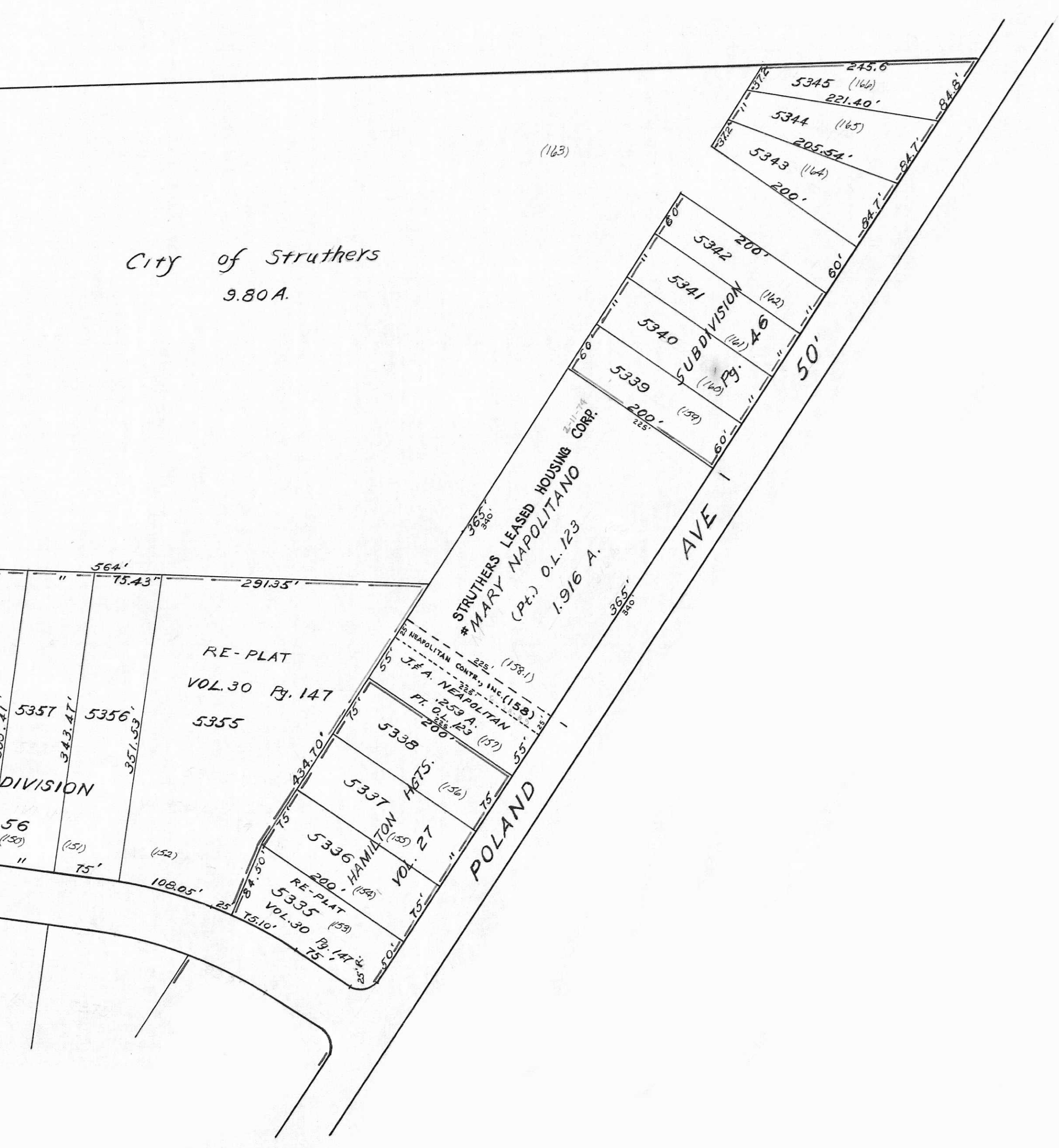
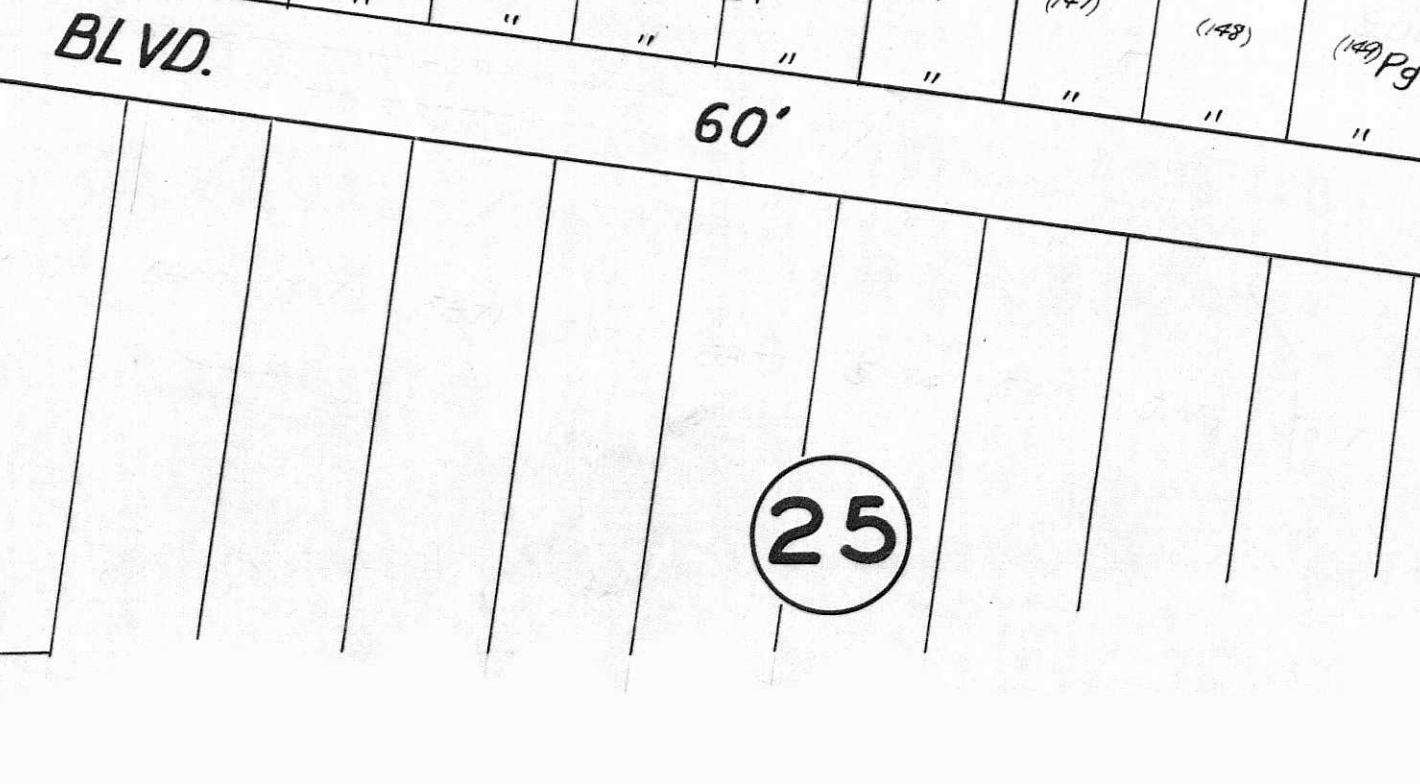
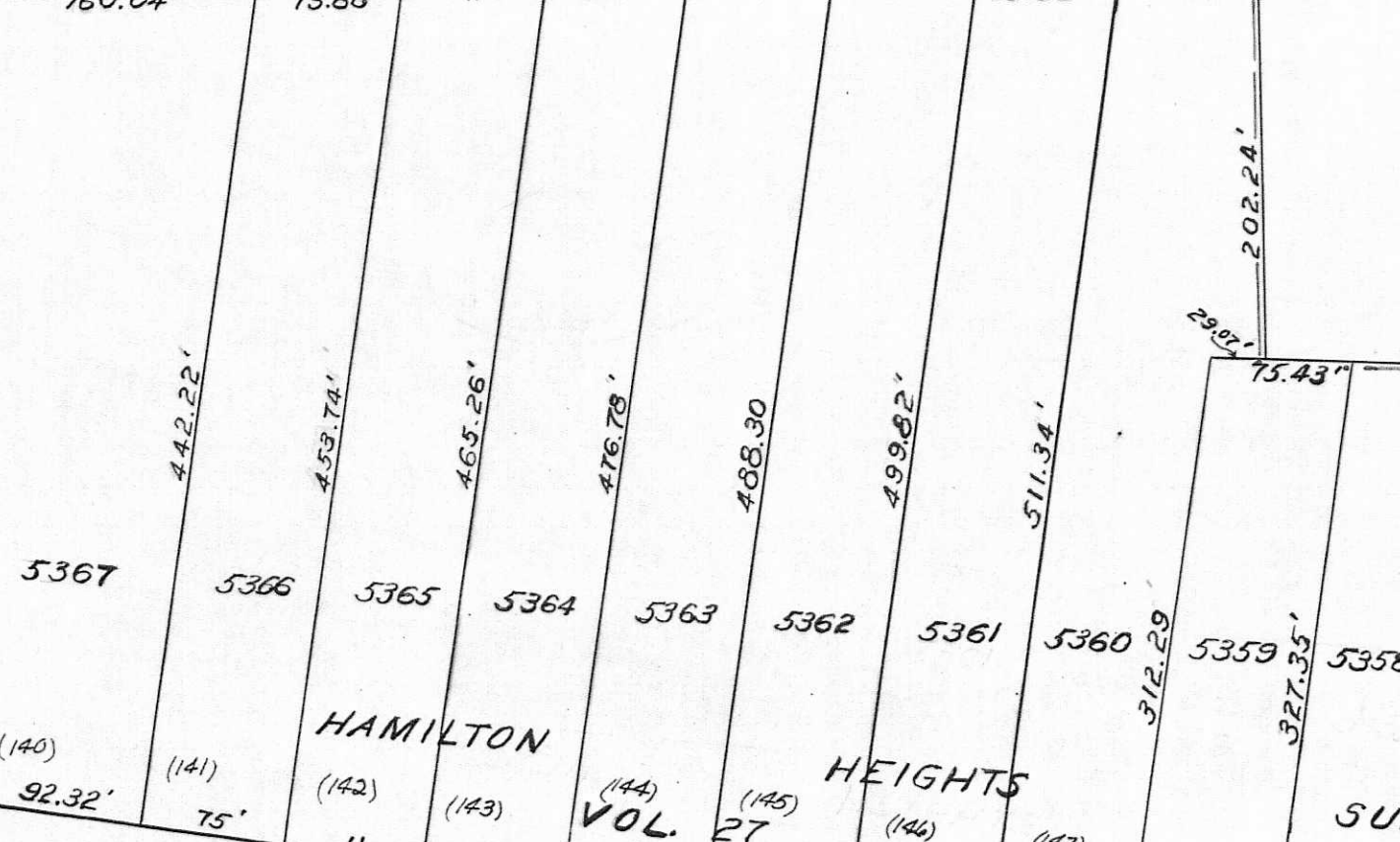
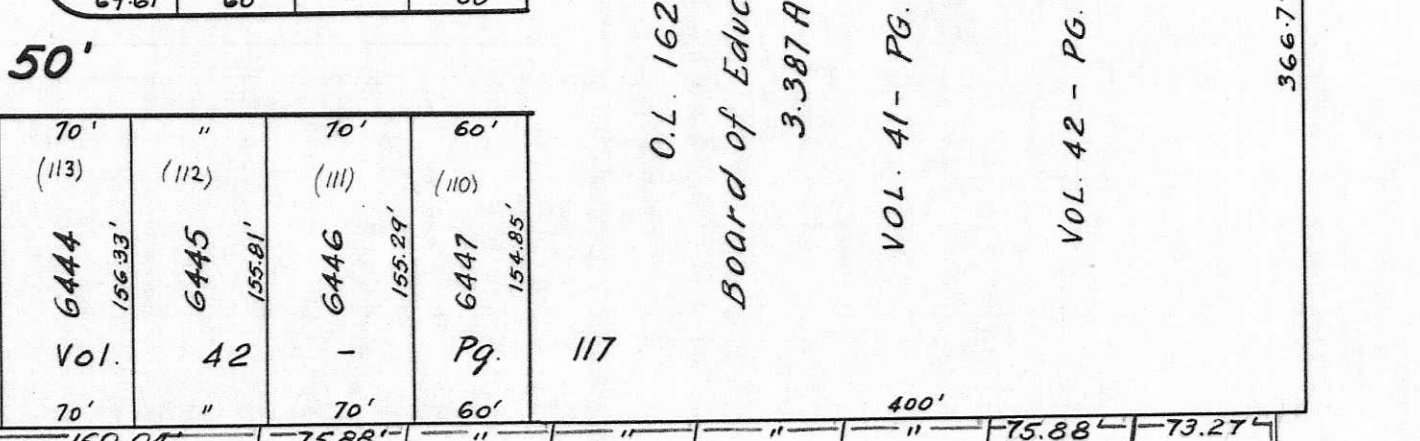


STRUTHERS		CITY	
1543 (51)	72'	41 - (55)	PG. 43 (57)
9	8	7	6
6376	6375	6374	6373
73.6	72'	"	"

HARVEY ST. 50'	
6377	6378
17	18
6379	6380
19	20
6381	6382
21	22
6383	6384
23	24
6385	6386
25	26

OMAR ST. 50'	
6397	6398
37	38
6399	6400
39	40
6401	6402
41	42
6403	6404
43	44

SMITHFIELD ST. 50'	
6413	6414
58	59
6415	6416
61	62
6417	6418
63	64
6419	6420
65	66
6421	6422



60' ST. FIFTH

60' ST. GARFIELD

POWER LINE

POLAND TOWNSHIP CORP. LINE

CITY LIMITS CORP. LINE

CITY LIMITS CORP. LINE

POLYLAND

FIVE

Sheldahl lane

Krollwood Ave

City of Struthers  
 9.80 A.

STRUTHERS LEASED HOUSING CORP.  
 MARY NAPOLITANO  
 (Pt.) O.L. 123  
 1-916 A.