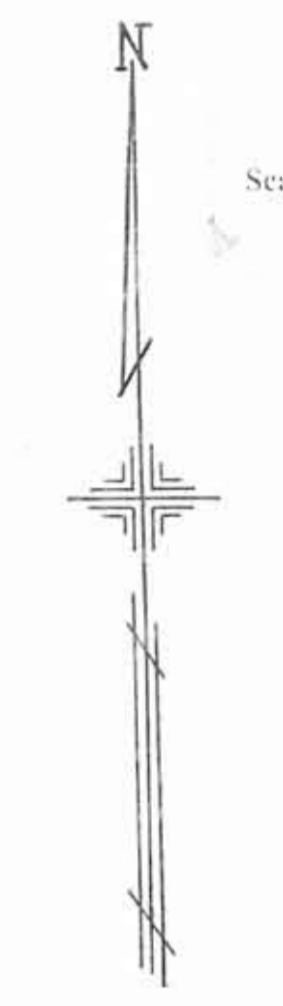


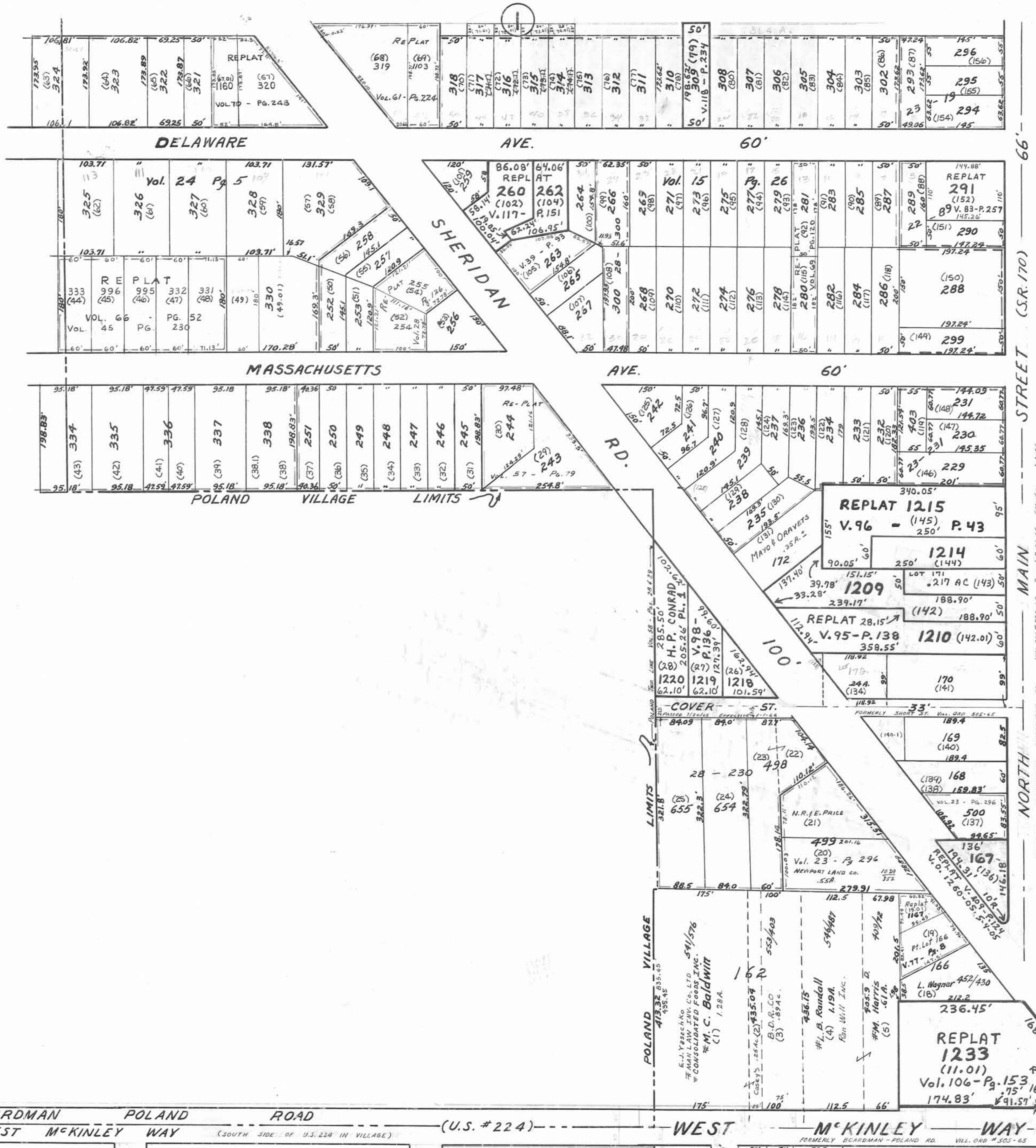
PLATE 2 POLAND VILLAGE

OFFICE OF COUNTY ENGINEER
MAHONING COUNTY COURT HOUSE
YOUNGSTOWN, OHIO

GIS Department
Scanned: 0-1-17



SCALE
1" = 100'



4

5

(NORTH SIDE OF U.S. 224 IN TWA)

BOARDMAN POLAND ROAD

(U.S. # 224)

WEST

MCKINLEY WAY

66'

OHIO AVE. 50'

66'

161'

63'

92.8'

53'

50'

66'