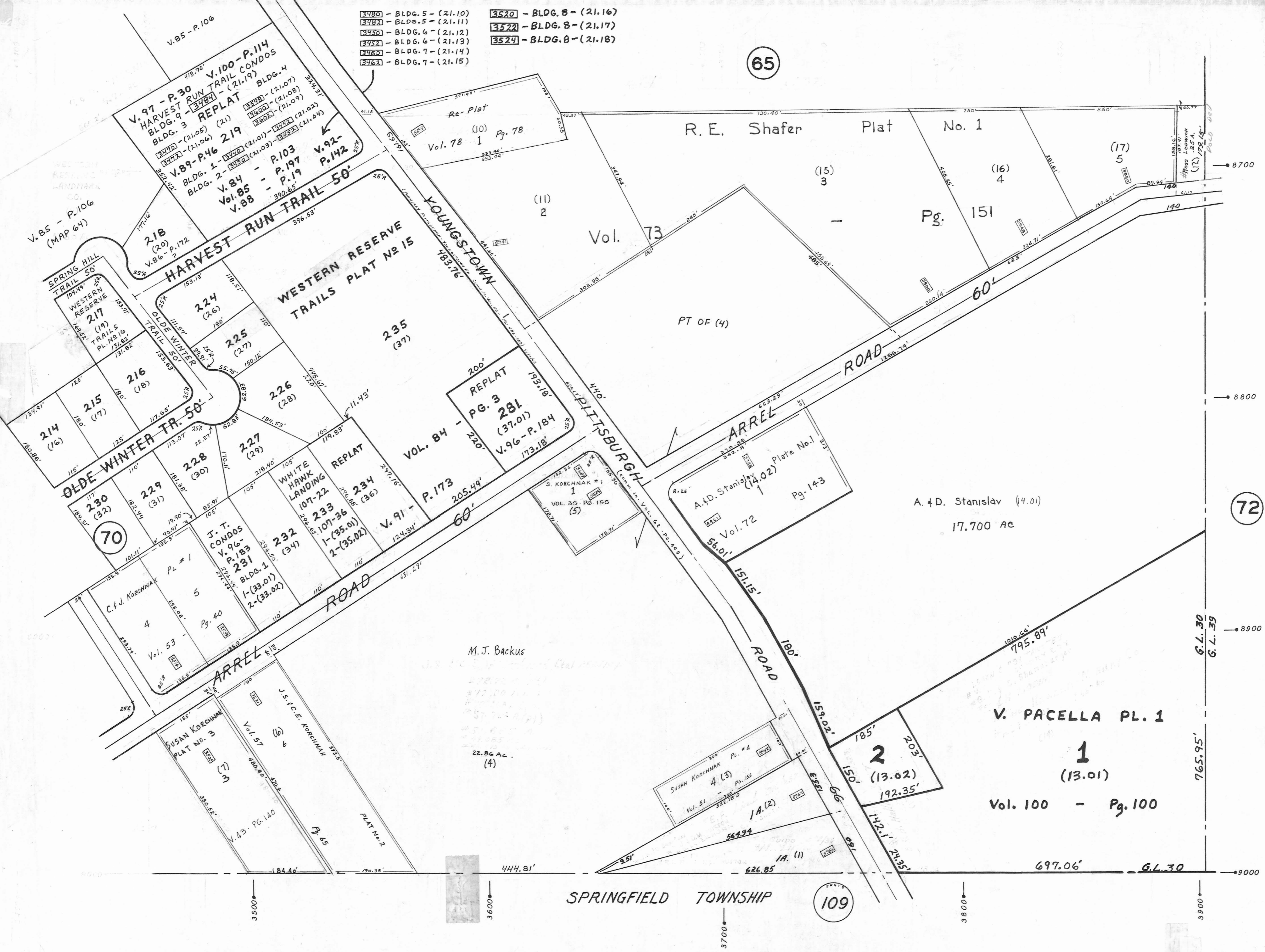


SCALE
1" = 100'

LEGEND

- 44 PLATE NUMBER
- 4700 HOUSE NUMBERING GRID
- 4710 HOUSE NUMBER
- (2) PERMANENT PARCEL NO.



65

72

109

- 3480 - BLDG. 5 - (21.10)
- 3481 - BLDG. 5 - (21.11)
- 3480 - BLDG. 6 - (21.12)
- 3482 - BLDG. 6 - (21.13)
- 3483 - BLDG. 7 - (21.14)
- 3484 - BLDG. 7 - (21.15)
- 3520 - BLDG. 8 - (21.16)
- 3521 - BLDG. 8 - (21.17)
- 3524 - BLDG. 8 - (21.18)

4000

V. 85 - P. 106

V. 85 - P. 106
(MAP 64)

V. 97 - P. 30
HARVEST RUN TRAIL CONDOS
BLDG. 9 - (21.19)
REPLAT
V. 89 - P. 46
BLDG. 1 - (21.01) - (21.07)
BLDG. 2 - (21.08) - (21.09)
BLDG. 3 - (21.10) - (21.14)
V. 84 - P. 103
V. 85 - P. 19
V. 88 - P. 142

SPRING HILL TRAIL 50
WESTERN RESERVE TRAILS PL. NO. 16
217 (19)
218 (20)
215 (17)
216 (18)
214 (16)
230 (32)
229 (31)
228 (30)
227 (29)
226 (28)
225 (27)
224 (26)

WESTERN RESERVE TRAILS PLAT NO 15
235 (37)
234 (36)
233 (35.01)
232 (34)
231 (33.01)
230 (32)

REPLAT PG. 3
VOL. 84 - P. 173
V. 96 - P. 184
PG. 281
(37.01)
V. 96 - P. 184
173.18'

R. E. Shafer Plat No. 1
Pg. 151
Vol. 73
PT OF (4)
(15) 3
(16) 4
(17) 5

ARREL ROAD
A. & D. Stanislav (14.01)
Platte No. 1
Pg. 143
Vol. 72
56.01'

A. & D. Stanislav (14.01)
17.700 AC

V. PACELLA PL. 1
1 (13.01)
Vol. 100 - Pg. 100
2 (13.02)
192.35'

M. J. Backus
22.86 AC.
(4)

SUSAN KORCHNAK PLAT NO. 3
V. 43 - PG. 140
PLAT NO. 2

3500

3600

3700

3800

3900

8700

8800

8900

9000

3500

3600

3700

3800

3900

8700

8800

8900

9000