

BOARD OF PARK COMMISSIONERS

G.L. 10, DIV. 4
G.L. 12, DIV. 4.

105

M. M. WILSON ARGEL W. WILSON	593/46 1200'	(104) 21	2.75 Ac.	7757
CATHERINE DOMER	573/517 1200'	(103) 22	2.75 Ac.	7784
JOHN & ELEANOR FERRARO	1100/649 1200'	(102) 23	2.75 Ac.	7790
MARJORIE HARKIN	661/570 1200'	(101) 24	2.75 Ac.	7806
CHARLOTTE M. HUNTINGTON	1157/459 1200'	(100) 25	2.75 Ac.	7824
LAWRENCE & DENISE SCHULER	598/56 1200'	26 (99)	2.75 Ac.	7834
JOHN & MAYME DIMENNO	949/356 1200'	(98) 27	2.75 Ac.	7850
JOHN & JENNIE PATTISON	839/509 1200'	(97) 28	2.75 Ac.	7854
CHARLES & SANDIA SEWELL	1125/227 1200'	(96) 29	2.75 Ac.	7864
RICHARD & ELIZ. HANLEY	1003/432 1200'	(95) 30	2.75 Ac.	7880
HILMA V. ENG	1026/547 1200'	(94) 31	2.75 Ac.	7890

PLAT No. 2
SIMON CROSS FARM
ETHEL SIMON CROSS FARM

Pg. 29
Pg. 27
Vol. 27

BOARD OF PARK COMMISSIONERS
254.24 Ac.
482/568

99

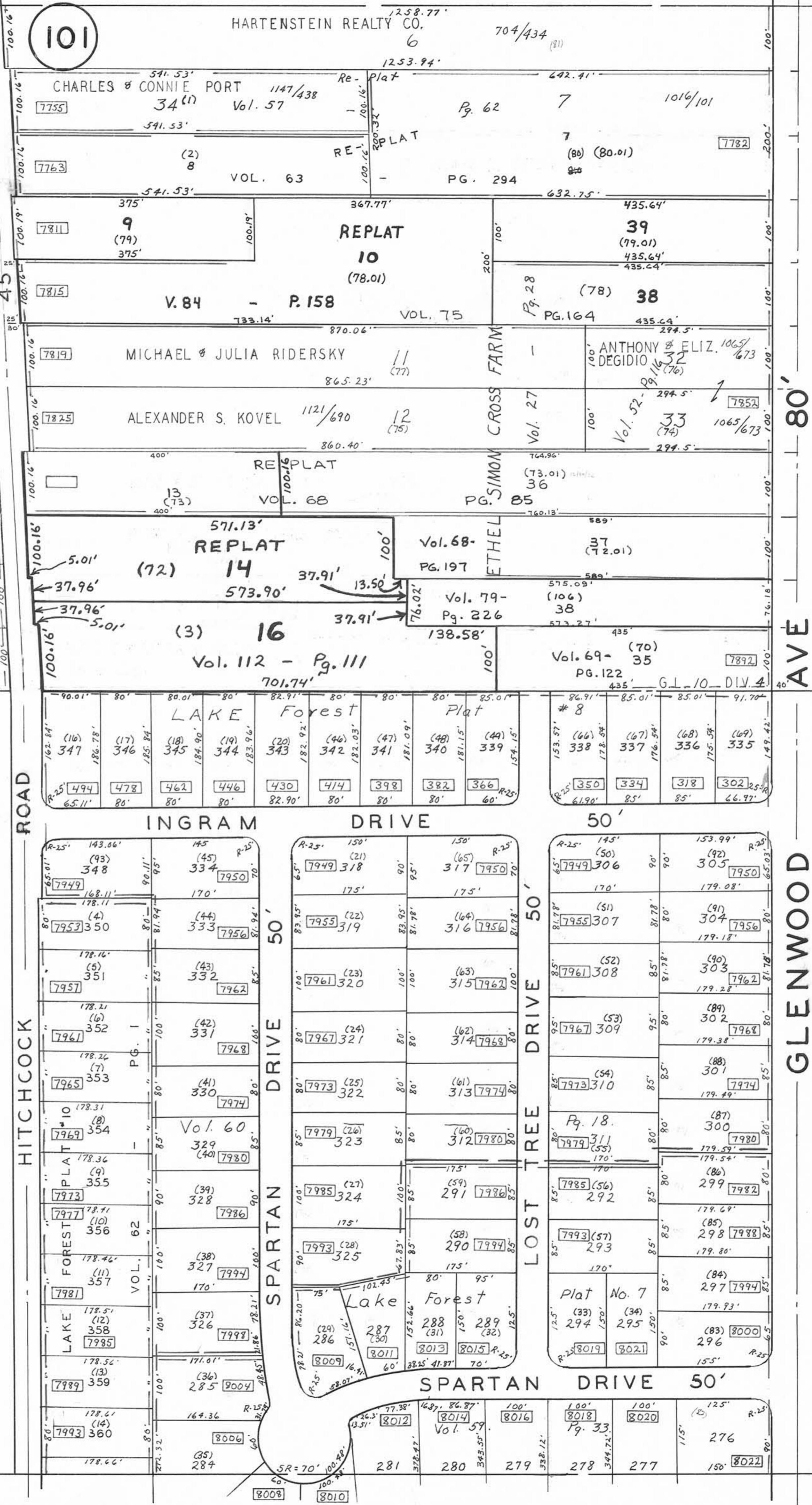
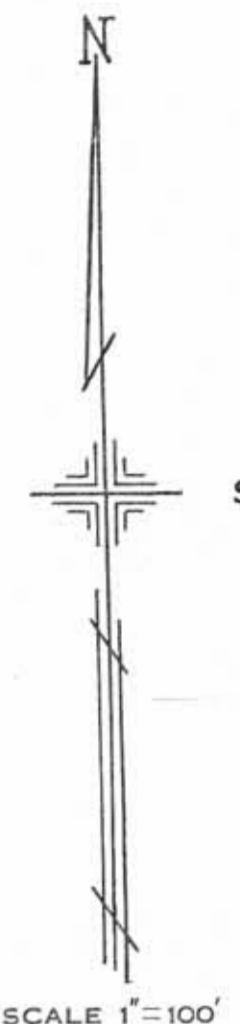


PLATE 100

G.L. 10, 12, DIV. 4

BOARDMAN TOWNSHIP

OFFICE OF COUNTY ENGINEER
940 BEARS DEN ROAD
YOUNGSTOWN, OHIO



GIS Department
Scanned

SCALE 1"=100'

MAIONING COUNTY ENGINEER
AND TAX MAP DRAFTSMAN

93