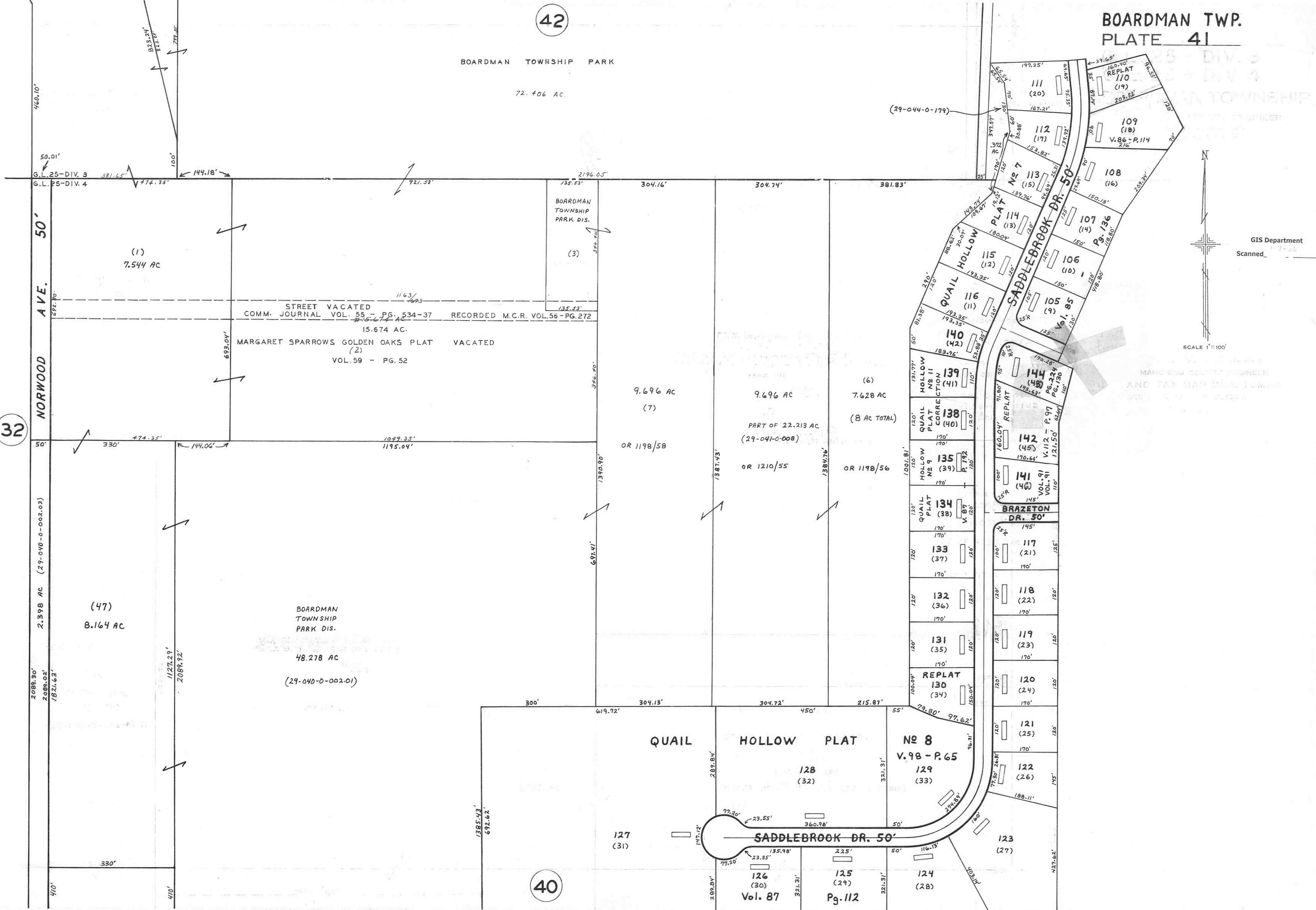


BOARDMAN TOWNSHIP PARK

72.406 AC.



GIS Department  
Scanned 11-1-26

SCALE 1"=100'

MAHONING COUNTY ENGINEER  
AND TAX MAP DRAWER

NORWOOD AVE. 50'

2.398 AC (29-040-0-002.03)  
2089.30'  
2089.02'  
7821.63'

(1)  
7.544 AC

STREET VACATED  
COMM. JOURNAL VOL. 55 - PG. 534-37 RECORDED M.C.R. VOL. 56 - PG. 272  
15.674 AC.  
MARGARET SPARROWS GOLDEN OAKS PLAT (2) VACATED  
VOL. 59 - PG. 52

BOARDMAN TOWNSHIP PARK DIS.

(3)

9.696 AC (7)  
OR 1198/58

9.696 AC (6)  
PART OF 22.213 AC (29-041-0-008)  
OR 1210/55

7.628 AC (8 AC TOTAL)  
OR 1198/56

(47)  
8.164 AC

BOARDMAN TOWNSHIP PARK DIS.  
48.278 AC  
(29-040-0-002.01)

QUAIL HOLLOW PLAT NO 8  
V. 98 - P. 65

SADDLEBROOK DR. 50'

Vol. 87 Pg. 112

BRAZETON DR. 50'

