

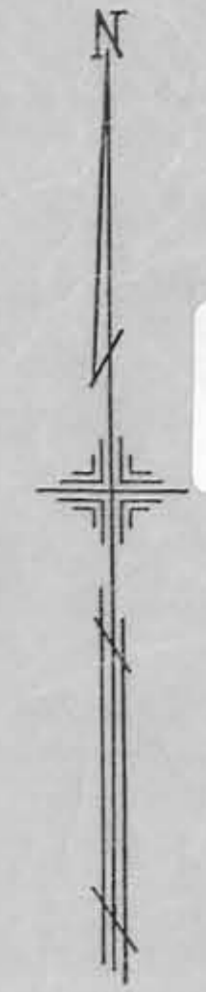
CANFIELD AND POLAND ROAD

5

PLATE 31
G.L. 4 - DIV. 1
LOTS-8-10-12 - DIV. 2
BOARDMAN TOWNSHIP

OFFICE OF COUNTY ENGINEER
940 BEARS DEN ROAD
YOUNGSTOWN, OHIO

GIS Department
Scanned 8/1/08



SCALE 1"=100'

W. DONALD L. BERT
MAHONING COUNTY ENGINEER
AND TAX MAP DRAFTER
100 N. MARKET ST.

STREET 132

MARKET STREET

91

42

32

REPLAT
Southern Park Mall Plat No. 1

LOT 1
(14)

REPLAT
LOT 2
(14.01)

V. 86 - P. 197

5.931 AC

Vol. 92	Pg. 49
Vol. 91	Pg. 117
Vol. 86	Pg. 197
Vol. 86	Pg. 138
Vol. 70	Pg. 106

7
(117)

G. SOUTHERN LAND CO. PLAT NO. 1
PG. 115
2
(16)
7377
3
(17)
7413
VOL. 61
G.L. 4 - DIV. 1
LOTS 8-10-12 - DIV. 2
CHURCH ST.

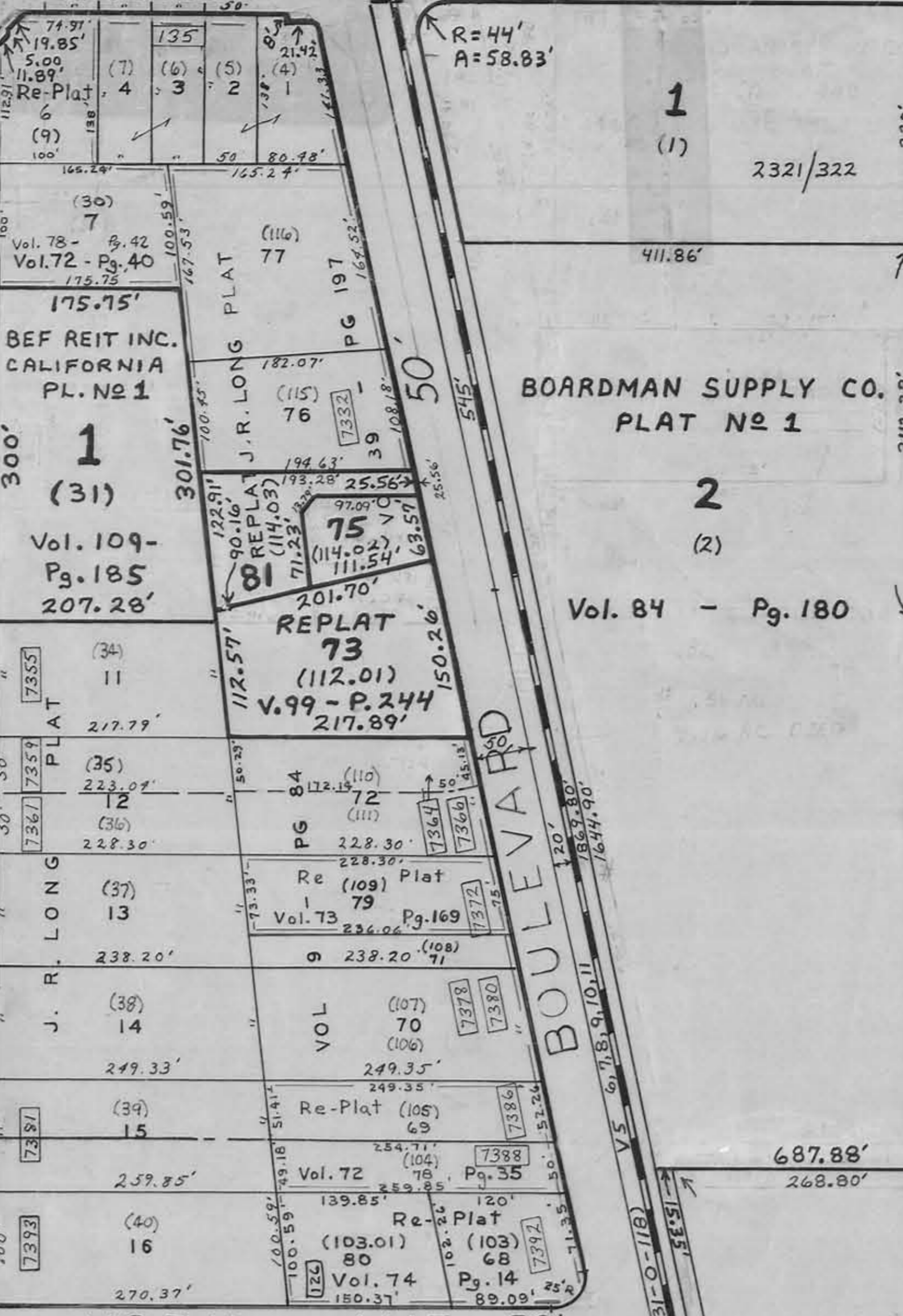
5
(14.02)
V. 86 - P. 138
215'

CALIFORNIA AVENUE

MASSACHUSETTS AVE. 50'

BOULEVARD

YORK AVE 50'



Vol. 82 26 Pg. 70
Vol. 80 Pg. 100

Vol. 64 - Pg. 219

(83)
2.945 AC

1056.63' TO E

664.59'

687.88'

268.80'

411.86'

2321/322

Vol. 84 - Pg. 180

(2)

2

BOARDMAN SUPPLY CO.
PLAT NO 1

1

(1)

66'

66'

R=44'
A=58.83'

83
2.945