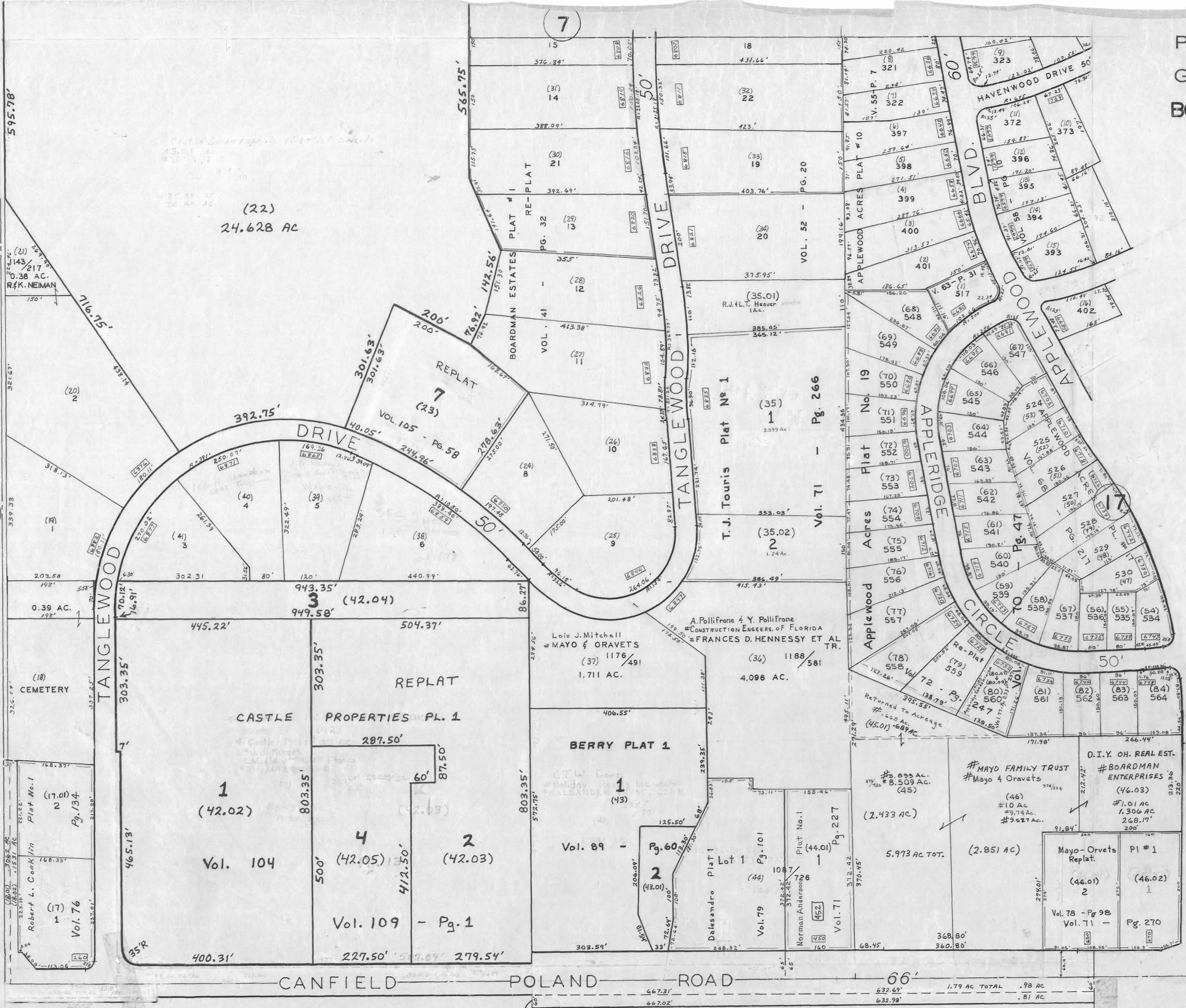


GIS Department  
 Scanned 10/17/07



WILBUR FARRIS  
 MAHONING COUNTY ENGINEER  
 AND TAX MAP DRAFTSMAN  
 REDRAWN BY K. J. SUTHER  
 JUNE 1977  
 TEX 131



5

7

42

(22)  
 24.628 AC

1  
 (42.02)  
 Vol. 104

4  
 (42.05)  
 Vol. 109 - Pg. 1

2  
 (42.03)

1  
 (43)  
 Vol. 89 - Pg. 60

2  
 (43.01)  
 Dalesandro Plat 1

1  
 (44)  
 Vol. 79 - Pg. 101

1  
 (44.01)  
 Norman Anderson Plat No. 1

(45)  
 #8.509 AC.  
 (2.433 AC)

(46)  
 #10 AC  
 #9.277 AC.  
 (2.851 AC)

(46.03)  
 #1.01 AC  
 #1.306 AC  
 2.68.17'

(46.01)  
 2  
 Vol. 78 - Pg. 98  
 Vol. 71 - Pg. 270

Lois J. Mitchell  
 # MAYO & ORAVETS  
 (37) 1176/491  
 1.711 AC.

BERRY PLAT 1  
 406.55'

1  
 (43)  
 Vol. 89 - Pg. 60

A. Pollifrone & Y. Pollifrone  
 # CONSTRUCTION ENGINEERS OF FLORIDA  
 # FRANCES D. HENNESSY ET AL TR.  
 (34) 1188/581  
 4.096 AC.

1  
 (44)  
 Vol. 79 - Pg. 101

1  
 (44.01)  
 Norman Anderson Plat No. 1

Returned to Acreage  
 # 6.68 AC.  
 (45.01) 6.68 AC

(45)  
 #8.509 AC.  
 (2.433 AC)

# MAYO FAMILY TRUST  
 # MAYO & ORAVETS  
 (46)  
 #10 AC  
 #9.277 AC.  
 (2.851 AC)

(46.01)  
 2  
 Vol. 78 - Pg. 98  
 Vol. 71 - Pg. 270

D.I.Y. OH. REAL EST.  
 # BOARDMAN ENTERPRISES  
 (46.03)  
 #1.01 AC  
 #1.306 AC  
 2.68.17'

(46.01)  
 2  
 Vol. 78 - Pg. 98  
 Vol. 71 - Pg. 270

5.973 AC TOT.

(2.851 AC)

Mayo-Oravets Replat.  
 (46.01)  
 2  
 Vol. 78 - Pg. 98  
 Vol. 71 - Pg. 270

368.80'  
 360.80'

274.01'

108.95'

1.79 AC TOTAL  
 .98 AC  
 .81 AC