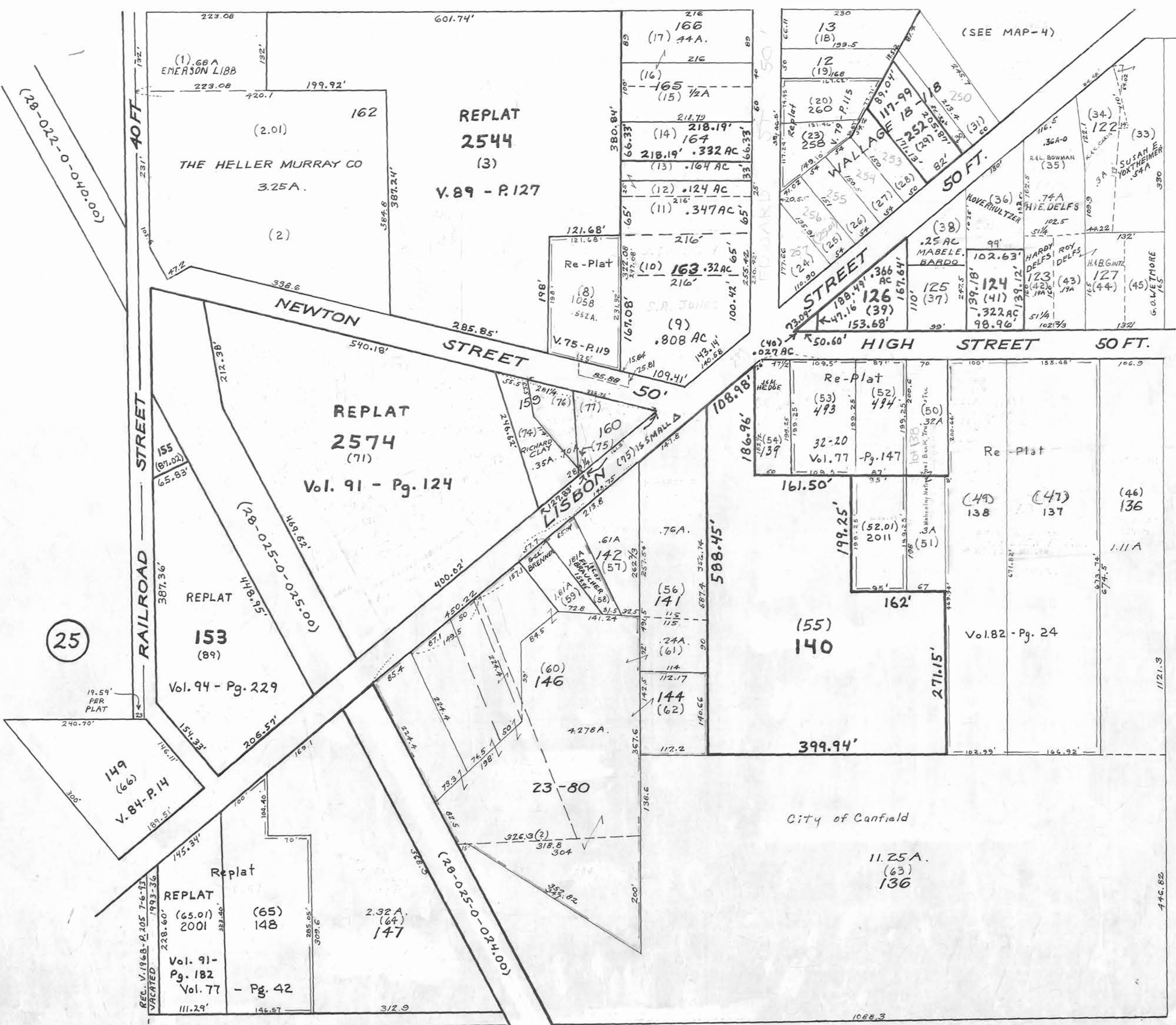


4



8

25

City of Canfield
11.25A.
(63)
136

REC. V. 1968-P. 205 7-6-73
VACATED 1993-36
REPLAT
(65.01)
2001
Vol. 91-
Pg. 182
Vol. 77 - Pg. 42
111.29' 146.57' 312.9'

REPLAT
153
(89)
Vol. 94 - Pg. 229

REPLAT
2574
(71)
Vol. 91 - Pg. 124

REPLAT
2544
(3)
V. 89 - P. 127