

No. **PLATE 60**  
**CANFIELD TOWNSHIP**

OFFICE OF COUNTY ENGINEER  
**LOT - 22**

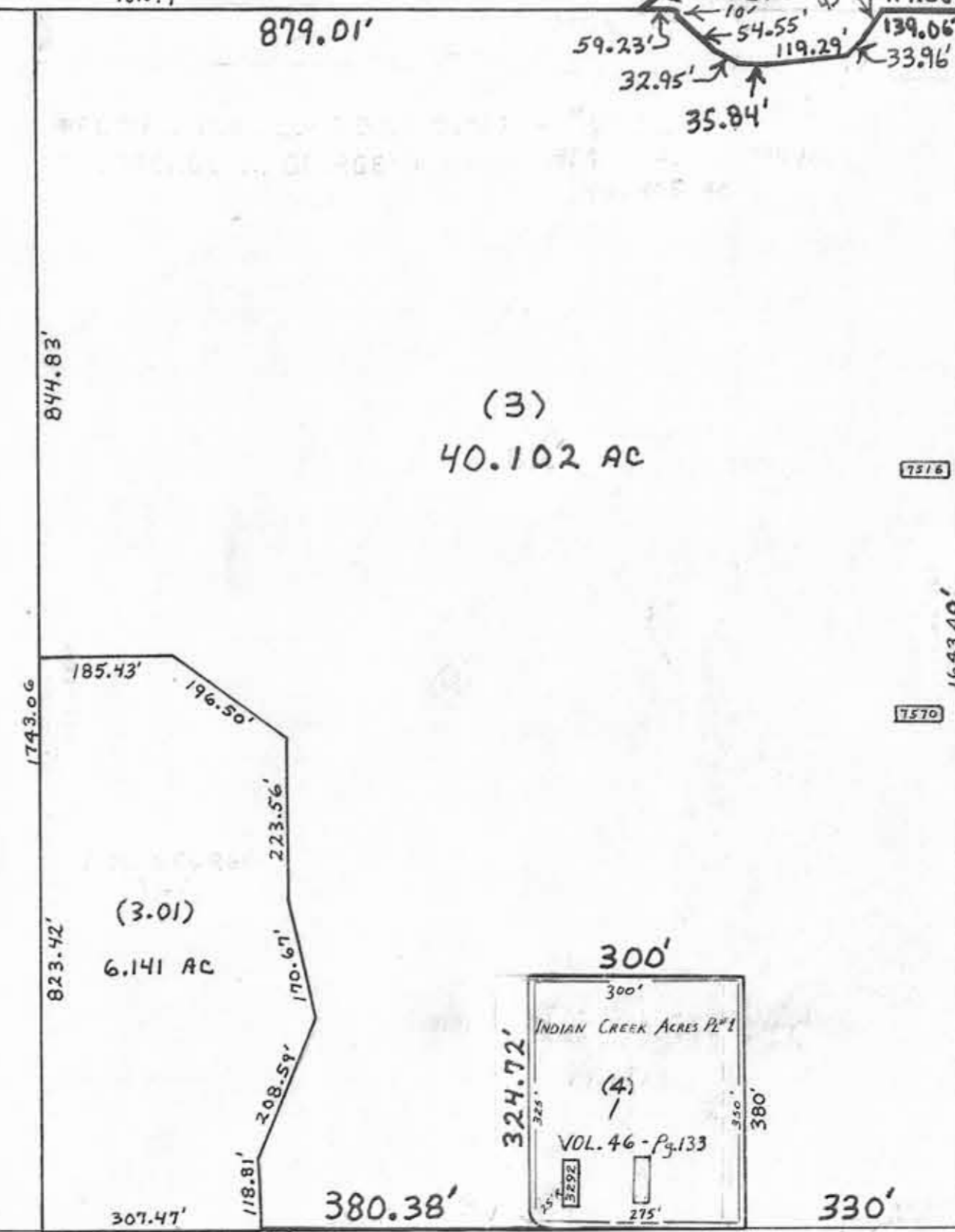
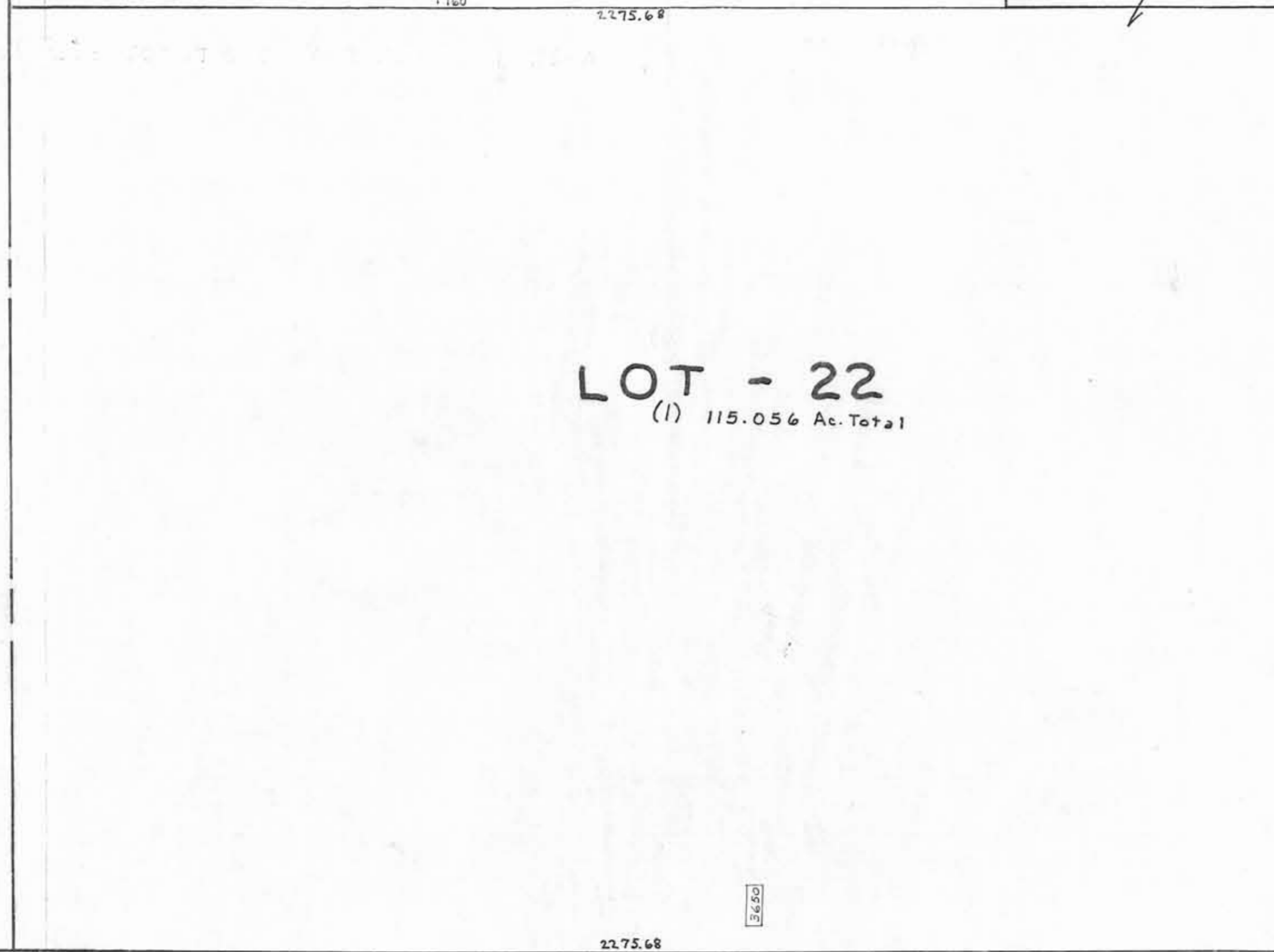
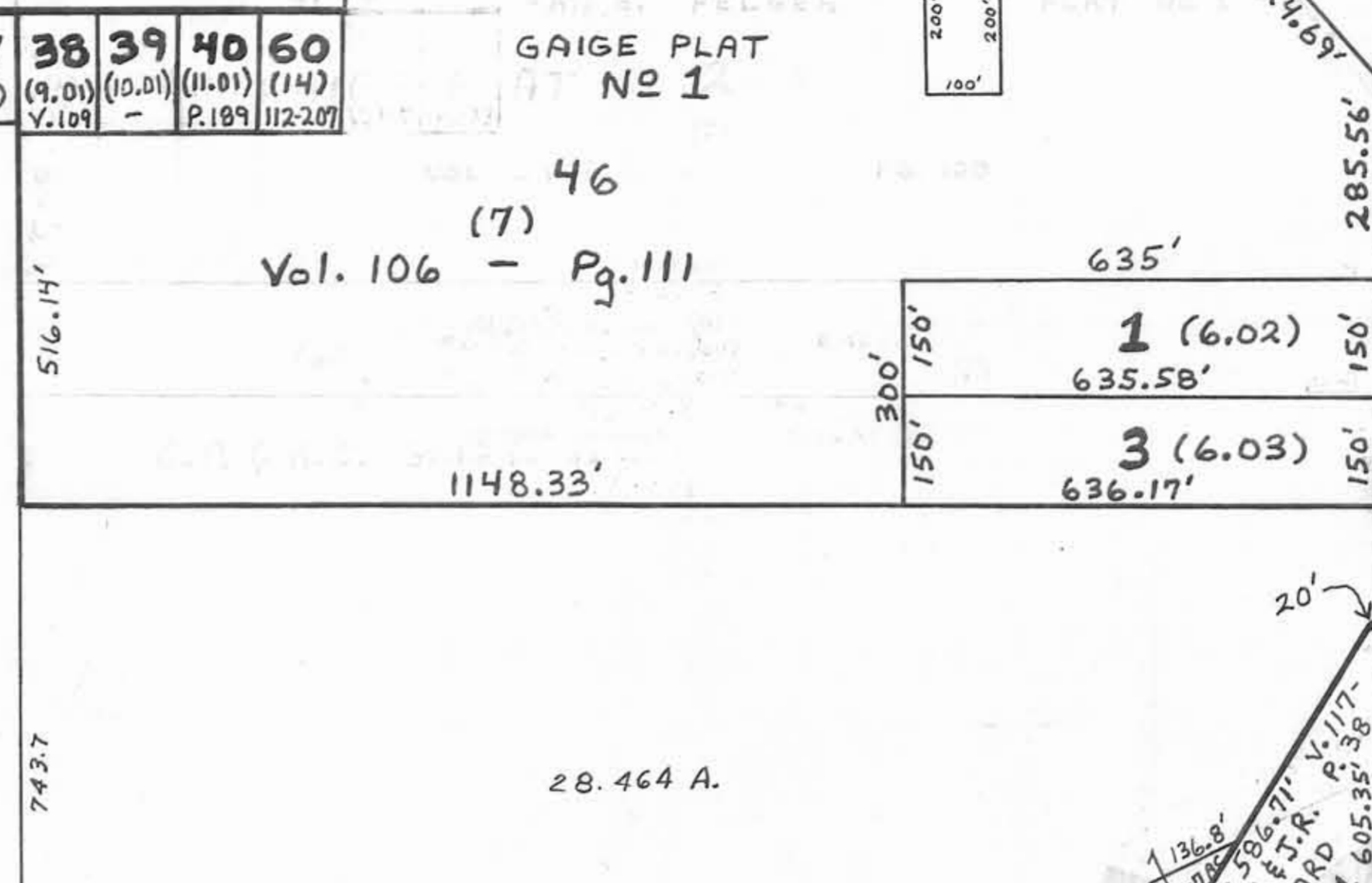
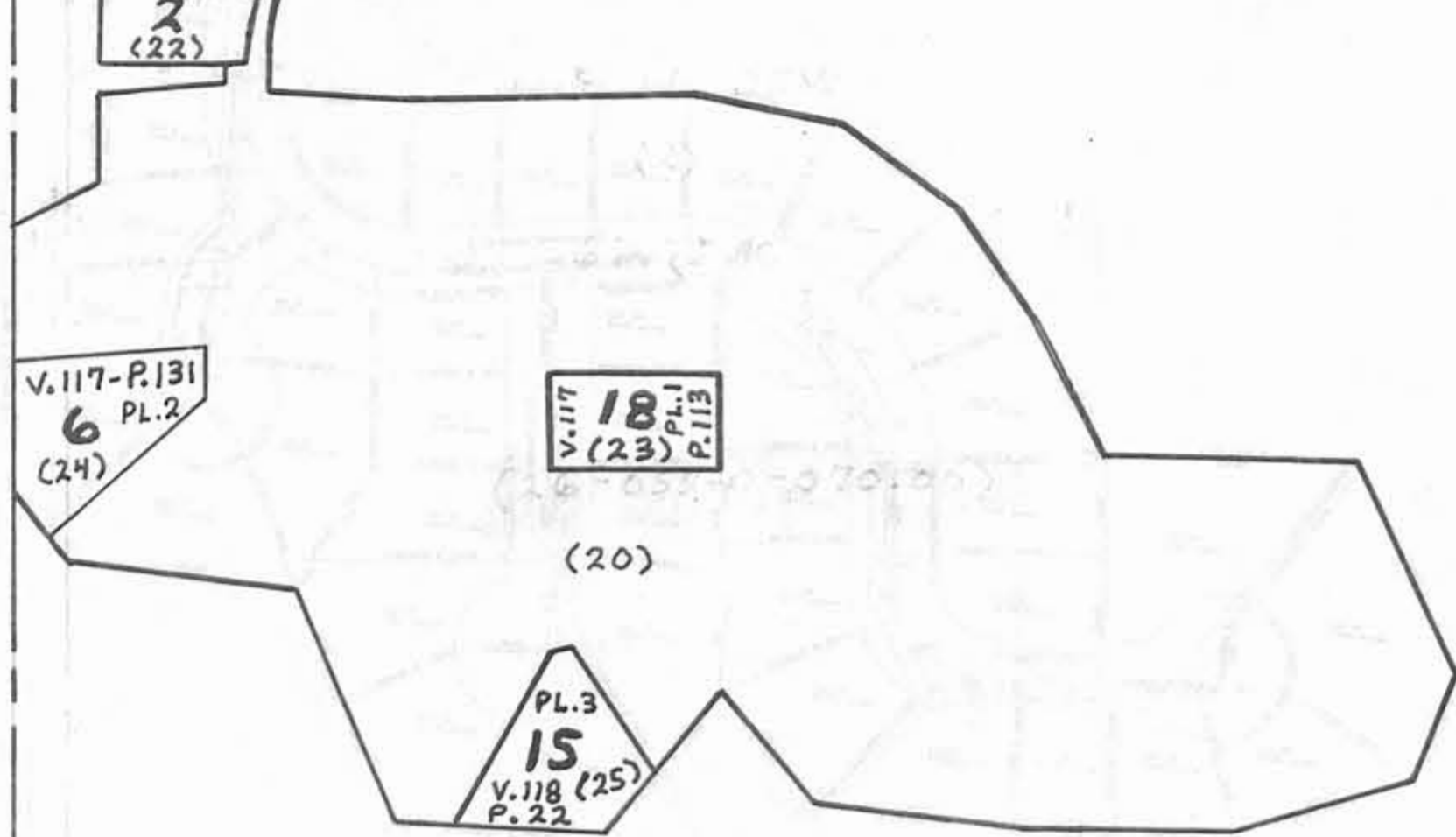
DISTRICT 26  
 DISTRICT 27  
 (59)

LOT-23

DIVISION - 3

LOT-22

33 (14)	14 (3)	15 (4)	16 (5)	732 AC (6)	17 (7)	18 (8)	19 (9)	20 (10)	21 (11)	22 (12)	23 (13)	41 (19)	42 (12.01)	43 (13.01)	44 (15)	45 (16)																			
WEST FORD				PLACE	KYLE RIDGE POINTE 50'																														
1 (21)				2 (22)				35 (16)				36 (17)				37 (18)				38 (9.01)				39 (10.01)				40 (11.01)				60 (14)			
V.117-P.131 PL.2 (24)				V.117 PL.1 V.118 PL.13 (23)				PL.3 V.118 P.22 (25)				V.109				P.189				112-207															



DIVISION - 4  
 SCALE 1 IN. = 200 FT.

GIS Department  
 Scanned: 12-11-08

MAHONING COUNTY ENGINEER  
 AND TAX MAP DRAFTSMAN

**LEGEND**

- (44) PLATE NUMBER
- 7400 → 4300 HOUSE NUMBERING GRID
- [4202] HOUSE NUMBER
- (2) OR (2.2) PERMANENT PARCEL NO.

(56)

(61)

3900' 3800' 3700' 3600' 3500' 3400' 3300' 3200'

LEFFINGWELL ROAD

ROAD BOARDMAN TWP TIPPECANOE

7700