

# CANFIELD TOWNSHIP

OFFICE OF COUNTY ENGINEER

## LOTS 22-23

### DIVISION - 3

SCALE 1 INCH = 200 FEET

GIS Department

Scanned: 10/14/07

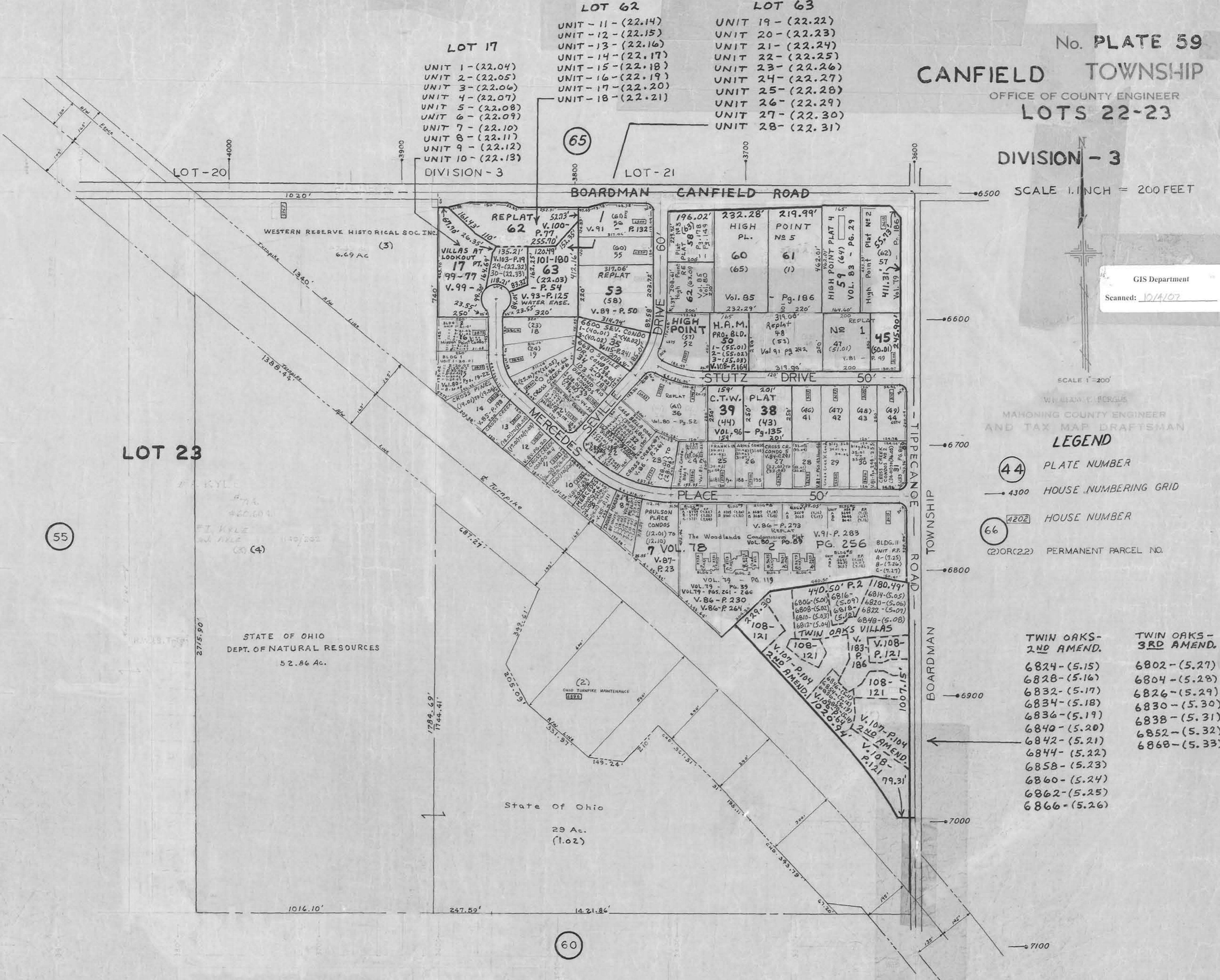
SCALE 1"=200'

WILLIAM C. BERGLAS  
MAHONING COUNTY ENGINEER  
AND TAX MAP DRAFTSMAN

### LEGEND

- 44 PLATE NUMBER
- 4300 HOUSE NUMBERING GRID
- 4202 HOUSE NUMBER
- 66 (2)OR(2.2) PERMANENT PARCEL NO.

TWIN OAKS - 2ND AMEND.	TWIN OAKS - 3RD AMEND.
6824-(5.15)	6802-(5.27)
6828-(5.16)	6804-(5.28)
6832-(5.17)	6826-(5.29)
6834-(5.18)	6830-(5.30)
6836-(5.19)	6838-(5.31)
6840-(5.20)	6852-(5.32)
6842-(5.21)	6868-(5.33)
6844-(5.22)	
6858-(5.23)	
6860-(5.24)	
6862-(5.25)	
6866-(5.26)	



- |                 |                 |                 |
|-----------------|-----------------|-----------------|
| <b>LOT 17</b>   | <b>LOT 62</b>   | <b>LOT 63</b>   |
| UNIT 1-(22.04)  | UNIT 11-(22.14) | UNIT 19-(22.22) |
| UNIT 2-(22.05)  | UNIT 12-(22.15) | UNIT 20-(22.23) |
| UNIT 3-(22.06)  | UNIT 13-(22.16) | UNIT 21-(22.24) |
| UNIT 4-(22.07)  | UNIT 14-(22.17) | UNIT 22-(22.25) |
| UNIT 5-(22.08)  | UNIT 15-(22.18) | UNIT 23-(22.26) |
| UNIT 6-(22.09)  | UNIT 16-(22.19) | UNIT 24-(22.27) |
| UNIT 7-(22.10)  | UNIT 17-(22.20) | UNIT 25-(22.28) |
| UNIT 8-(22.11)  | UNIT 18-(22.21) | UNIT 26-(22.29) |
| UNIT 9-(22.12)  |                 | UNIT 27-(22.30) |
| UNIT 10-(22.13) |                 | UNIT 28-(22.31) |

LOT 23

60

STATE OF OHIO  
DEPT. OF NATURAL RESOURCES  
52.86 Ac.

State of Ohio  
29 Ac.  
(1.02)

TIPPECANOE ROAD

BOARDMAN CANFIELD ROAD

TOWNSHIP

ROAD