

PLATE No. 32 CANFIELD TOWNSHIP

OFFICE OF COUNTY ENGINEER
940 BEARS DEN ROAD
YOUNGSTOWN, OHIO

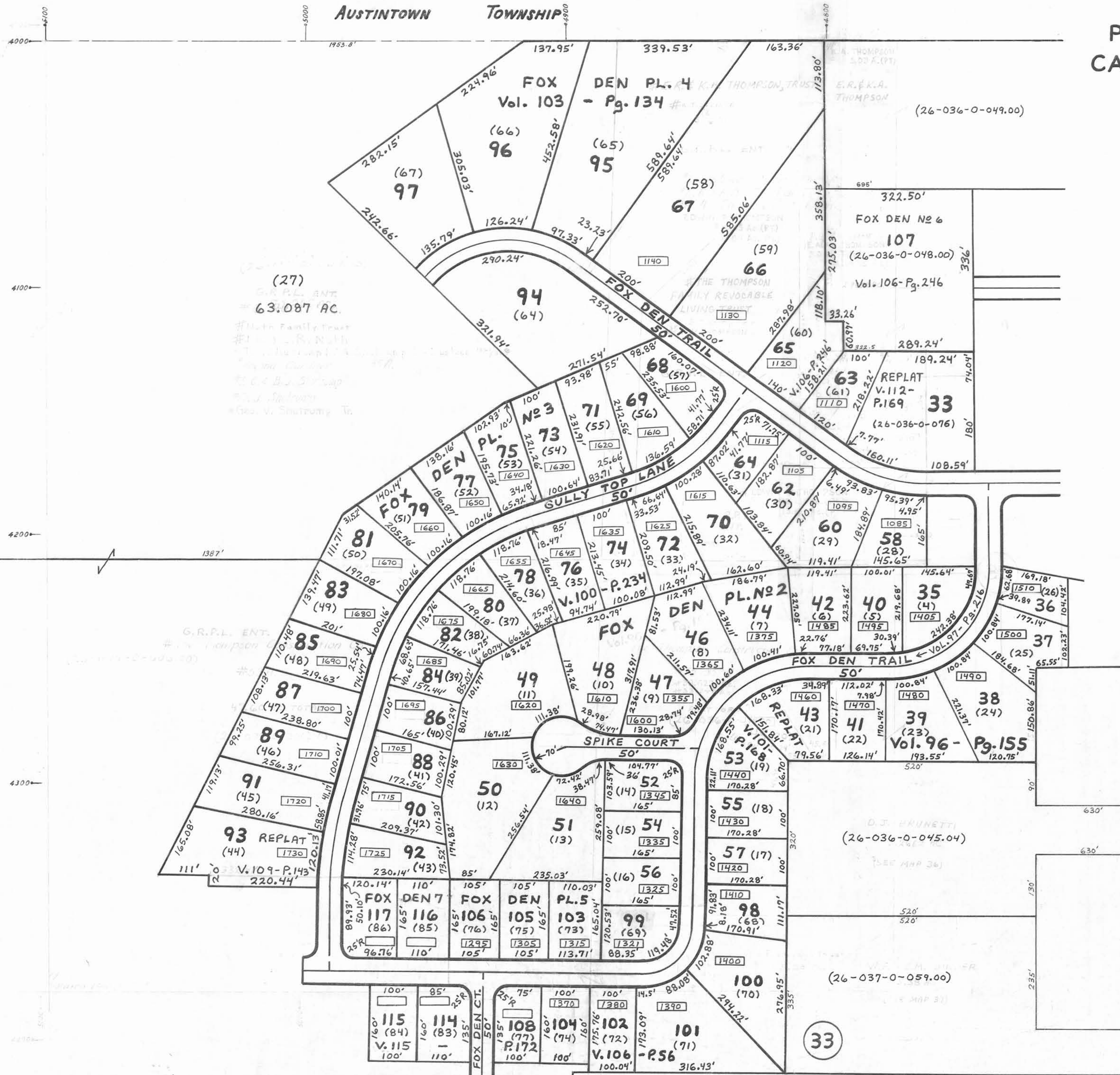


GIS Department
Scanned 8/23/07

WALTON COUNTY ENGINEER
AND TAX MAP DRAFTSMAN

LEGEND

- 44 PLATE NUMBER
- 4300 HOUSE NUMBERING GRID
- 4202 HOUSE NUMBER
- (2) OR (2.2) PERMANENT PARCEL NO.



75

33