

CANFIELD TOWNSHIP

18

LOT 14 DIV. 3

LOT 13 DIV. 3

LOT 38 DIV. 2

LOT - 27

DIVISION - 4

SCALE 1 IN. = 200 FT.

GIS Department

Scanned 10/3/13

LEGEND

44 PLATE NUMBER

4300 HOUSE NUMBERING GRID

4202 HOUSE NUMBER

(2) OR (2.2) PERMANENT PARCEL NO.

7100

7200

7300

20

7400

7500

7600

7800

7700

7600

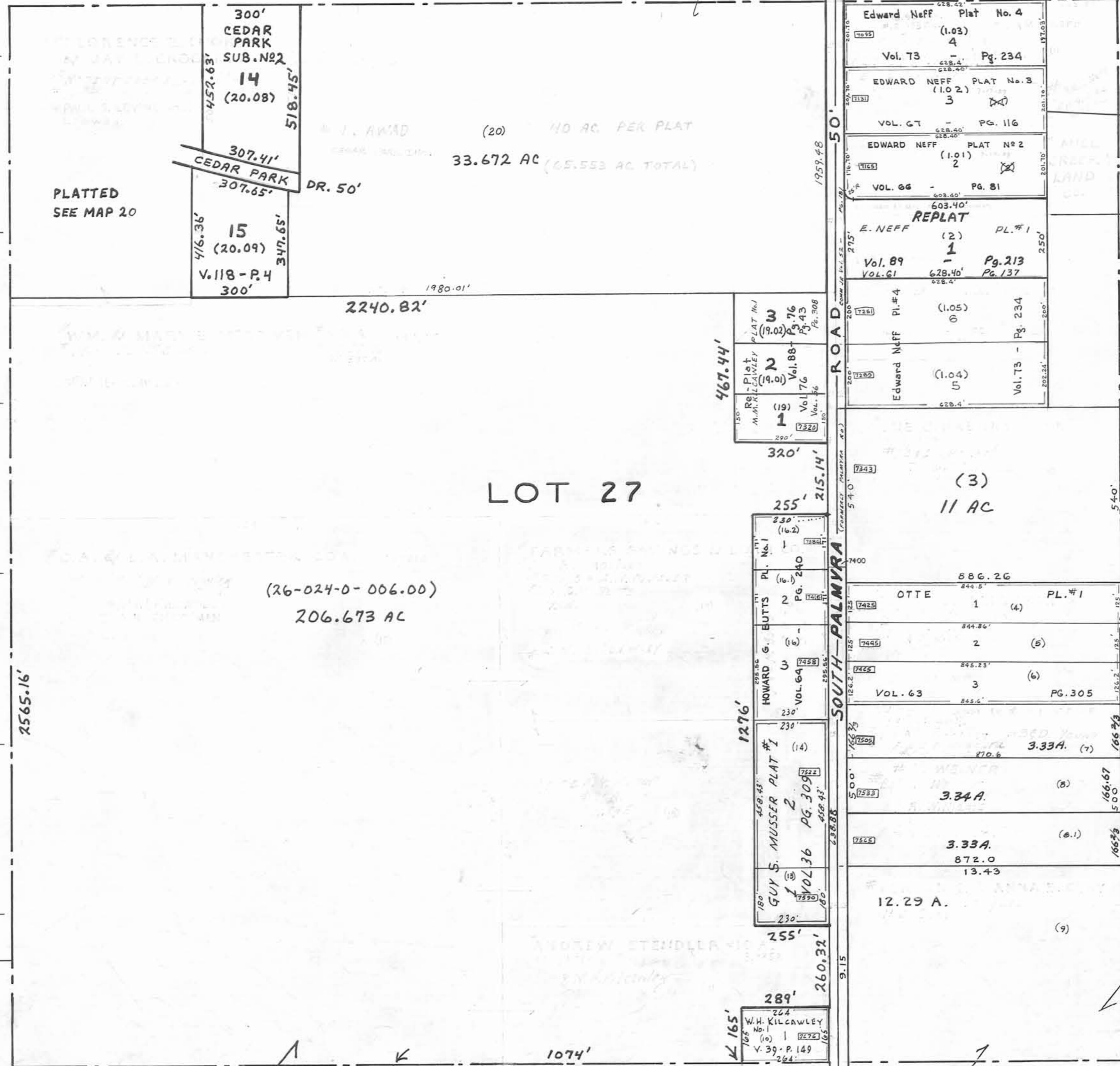
7500

7400

7200

24

22



PLATTED
SEE MAP 20

J. AWAD (20) 40 AC PER PLAT
33.672 AC (65.553 AC TOTAL)

(26-024-0-006.00)
206.673 AC

LOT 27

(3)
11 AC

ROAD 50'
SOUTH-PALMYRA

300' CEDAR PARK SUB. No. 2 14 (20.08)
307.41' CEDAR PARK 307.65'
452.63' 518.45'
476.36' 347.65'
15 (20.09)
V. 118 - P. 4 300'

RE-PLAT M.A. KILCAWLEY PL. #1
1 (19) Vol. 76 Pg. 43
2 (19.0) Vol. 76 Pg. 43
3 (19.02) Vol. 76 Pg. 43

HOWARD G. EUTTS PL. #1
1 (16.2) Vol. 240 Pg. 141
2 (16) Vol. 240 Pg. 141
3 (16) Vol. 64 Pg. 305
GUY S. MUSSER PLAT #1
1 (14) Vol. 36 Pg. 309
2 (14) Vol. 36 Pg. 309

W.H. KILCAWLEY PL. #1
1 (16) Vol. 149 Pg. 204

Edward Neff Plat No. 4
1 (1.03) Vol. 73 Pg. 234
Edward Neff Plat No. 3
1 (1.02) Vol. 67 Pg. 116
Edward Neff Plat No. 2
1 (1.01) Vol. 66 Pg. 81
E. NEFF REPLAT PL. #1
1 (2) Vol. 89 Pg. 213
Vol. 61 Pg. 137
Edward Neff Pl. #4
1 (1.05) Vol. 73 Pg. 234
Edward Neff (1.04) Vol. 73 Pg. 234

OTTE PL. #1
1 (4) Vol. 63 Pg. 305
3.33A (7)
3.34A (8)
3.33A (8.1)
12.29 A. (9)

LOT 25 DIV. 3