

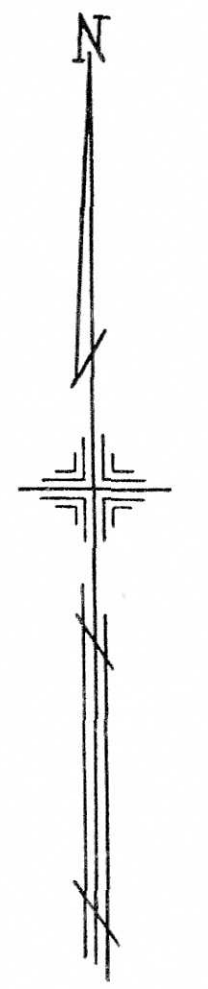
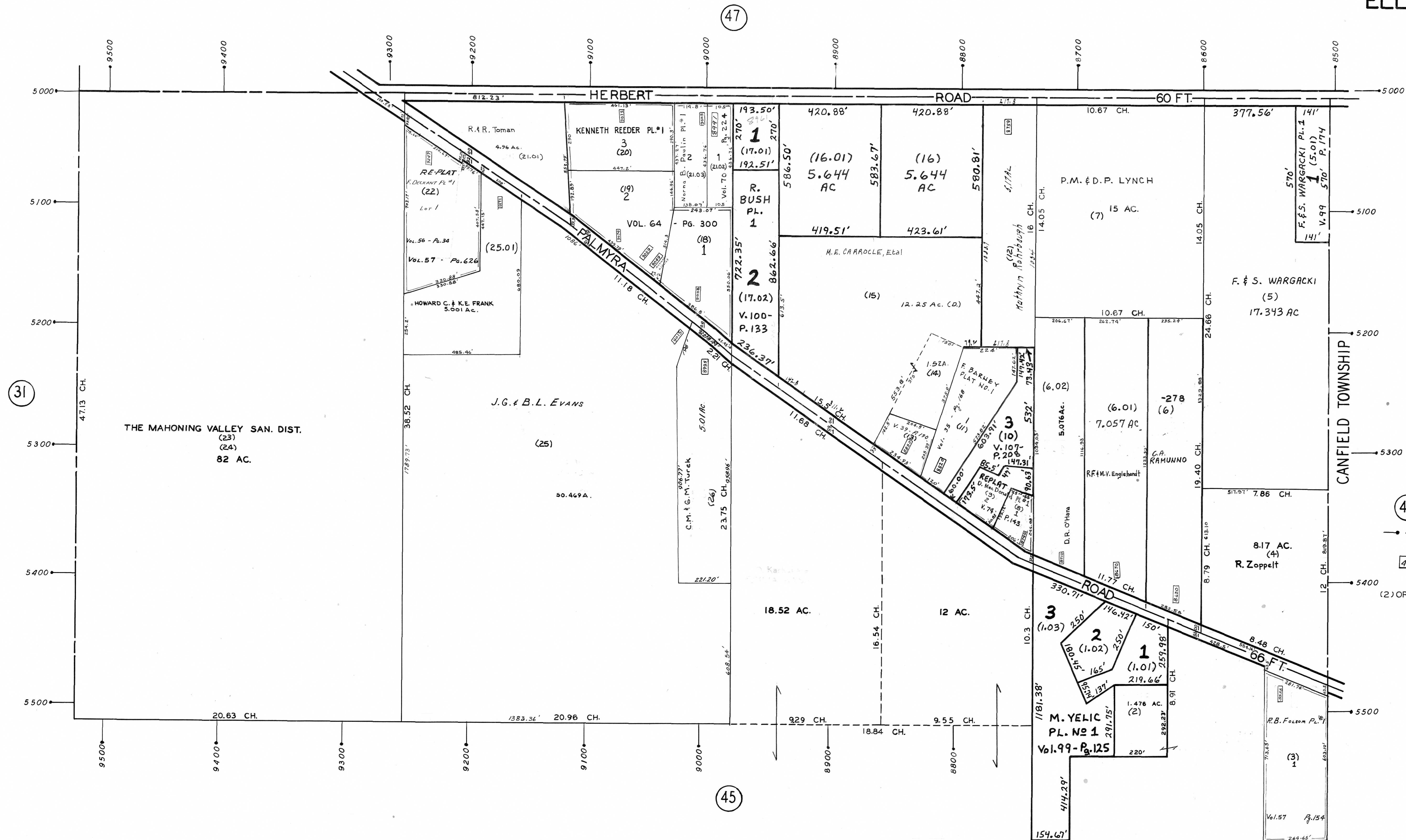
PLATE 46

SECTION No. 16

NORTH HALF

ELLSWORTH TOWNSHIP

OFFICE OF COUNTY ENGINEER  
MAHONING COUNTY COURT HOUSE  
YOUNGSTOWN, OHIO



LEGEND

47 INDICATES PLATE NUMBER

4700 HOUSE NUMBERING GRID

4170 HOUSE NUMBER

(2) OR (2.2) PERMANENT PARCEL NO.

GIS Department

Scanned 1-5-2004