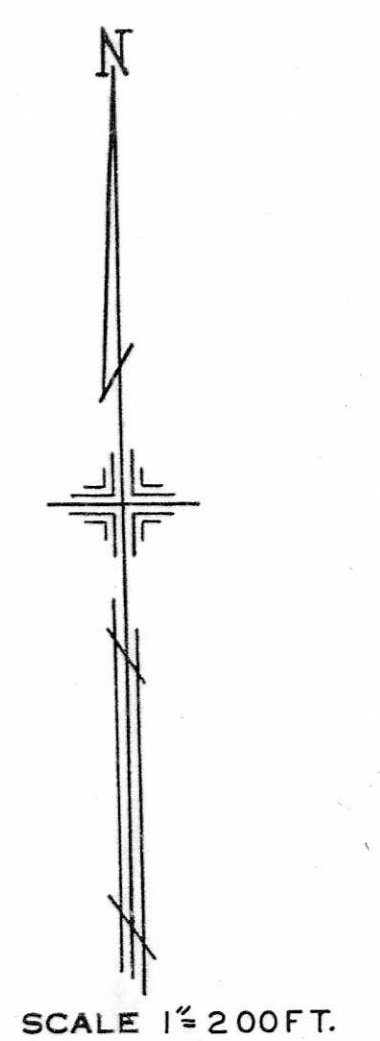


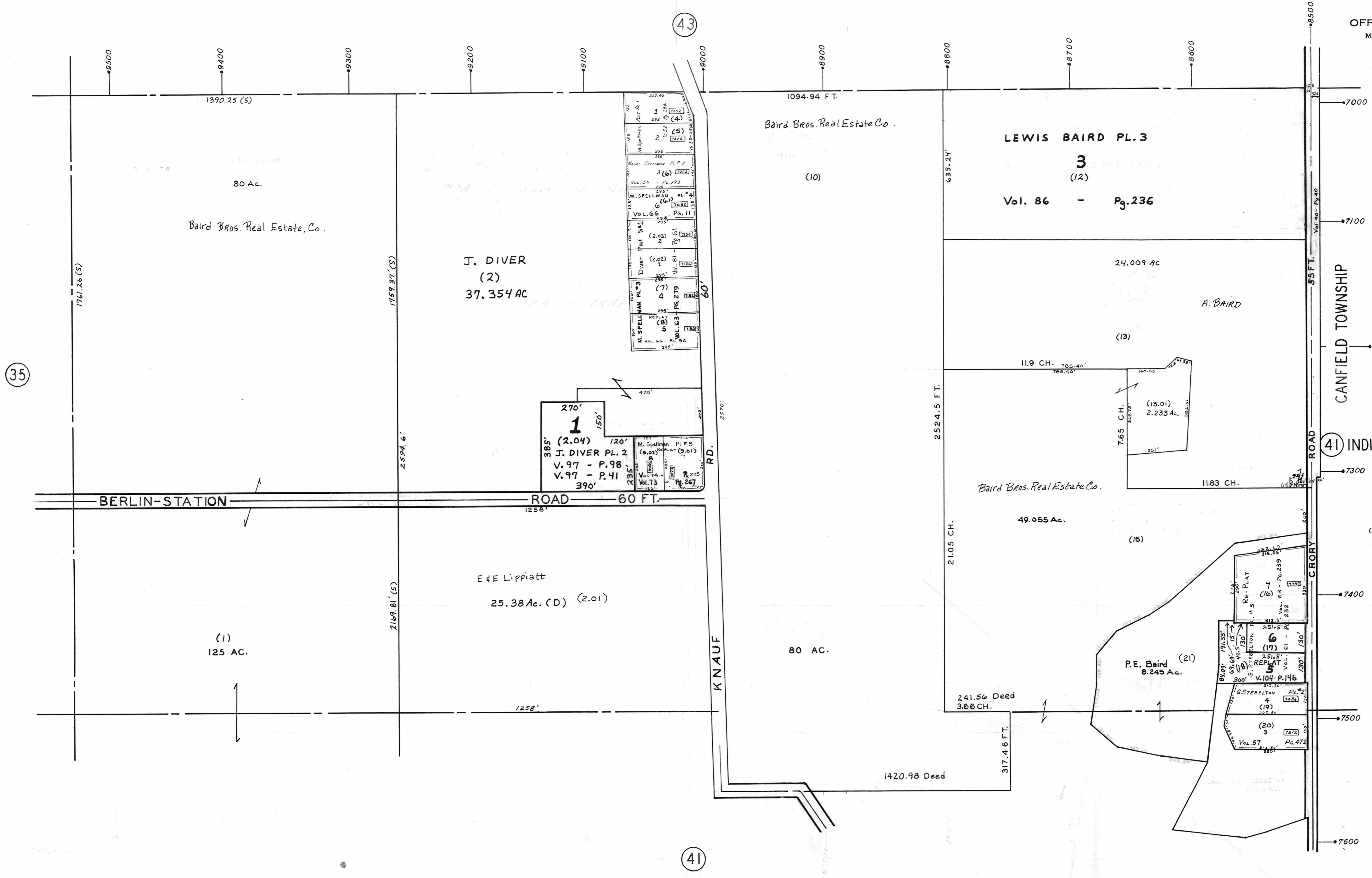
PLATE 42
SECTION No. 6
NORTH HALF
ELLSWORTH TOWNSHIP

OFFICE OF COUNTY ENGINEER
MAHONING COUNTY COURT HOUSE
YOUNGSTOWN, OHIO



LEGEND

- (41) INDICATES PLATE NUMBER
- 7300 → 4700 HOUSE NUMBERING GRID
- 4170 HOUSE NUMBER
- (2) OR (2.2) PERMANENT PARCEL NO.



(35)

(43)

(41)