

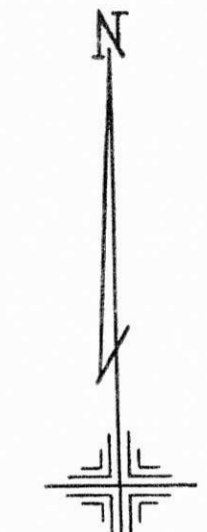
PLATE 41

SECTION No. 6

SOUTH HALF

ELLSWORTH TOWNSHIP

OFFICE OF COUNTY ENGINEER  
MAHONING COUNTY COURT HOUSE  
YOUNGSTOWN, OHIO

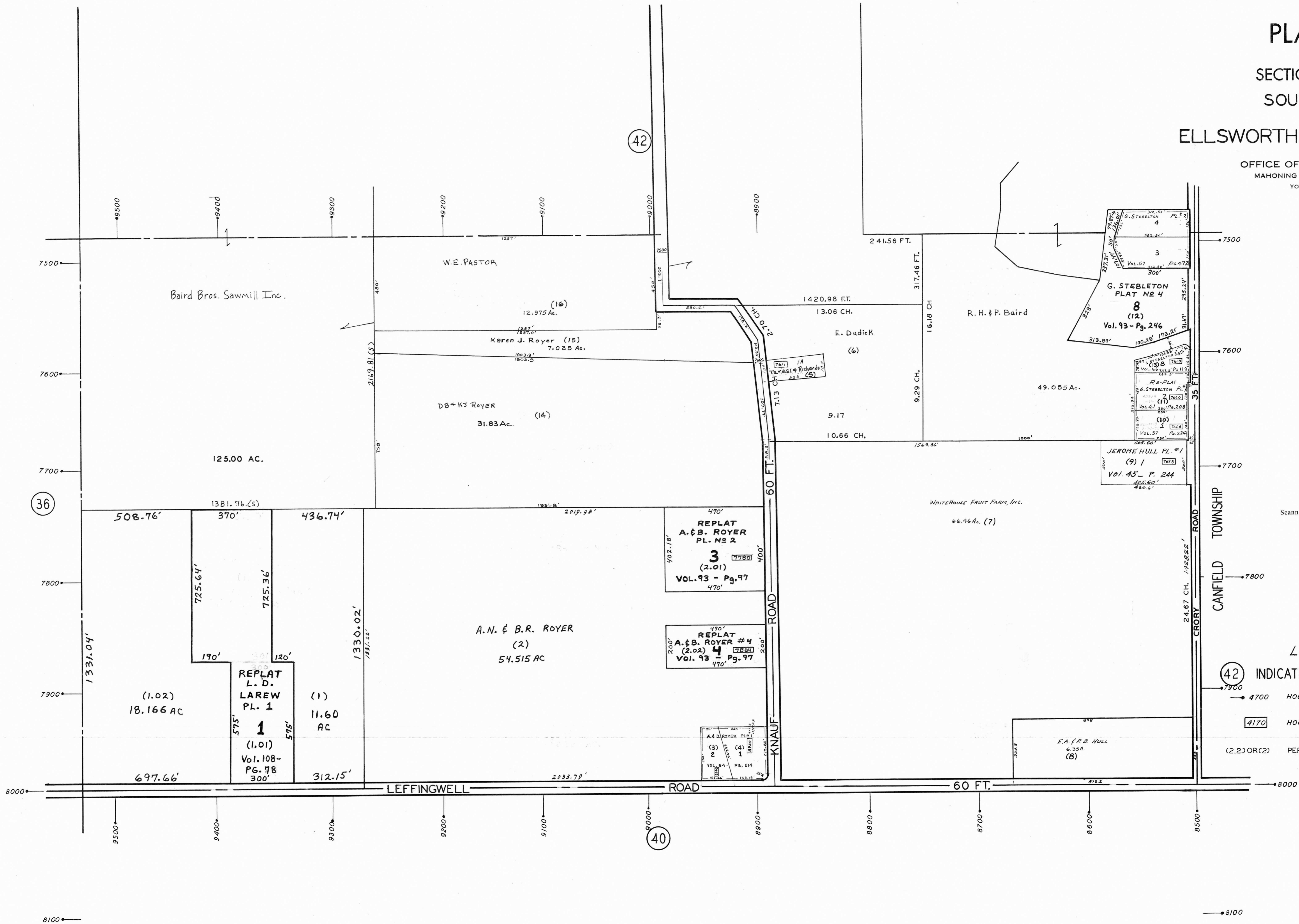


SCALE 1" = 200'

GIS Department  
Scanned: 3-21-05

LEGEND

- 42 INDICATES PLATE NUMBER
- 4700 HOUSE NUMBERING GRID
- 4170 HOUSE NUMBER
- (2.2) OR (2) PERMANENT PARCEL NO.



42

36

40

8100

8100