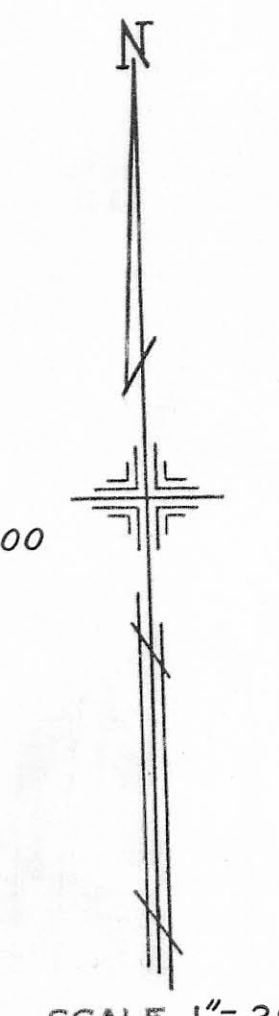
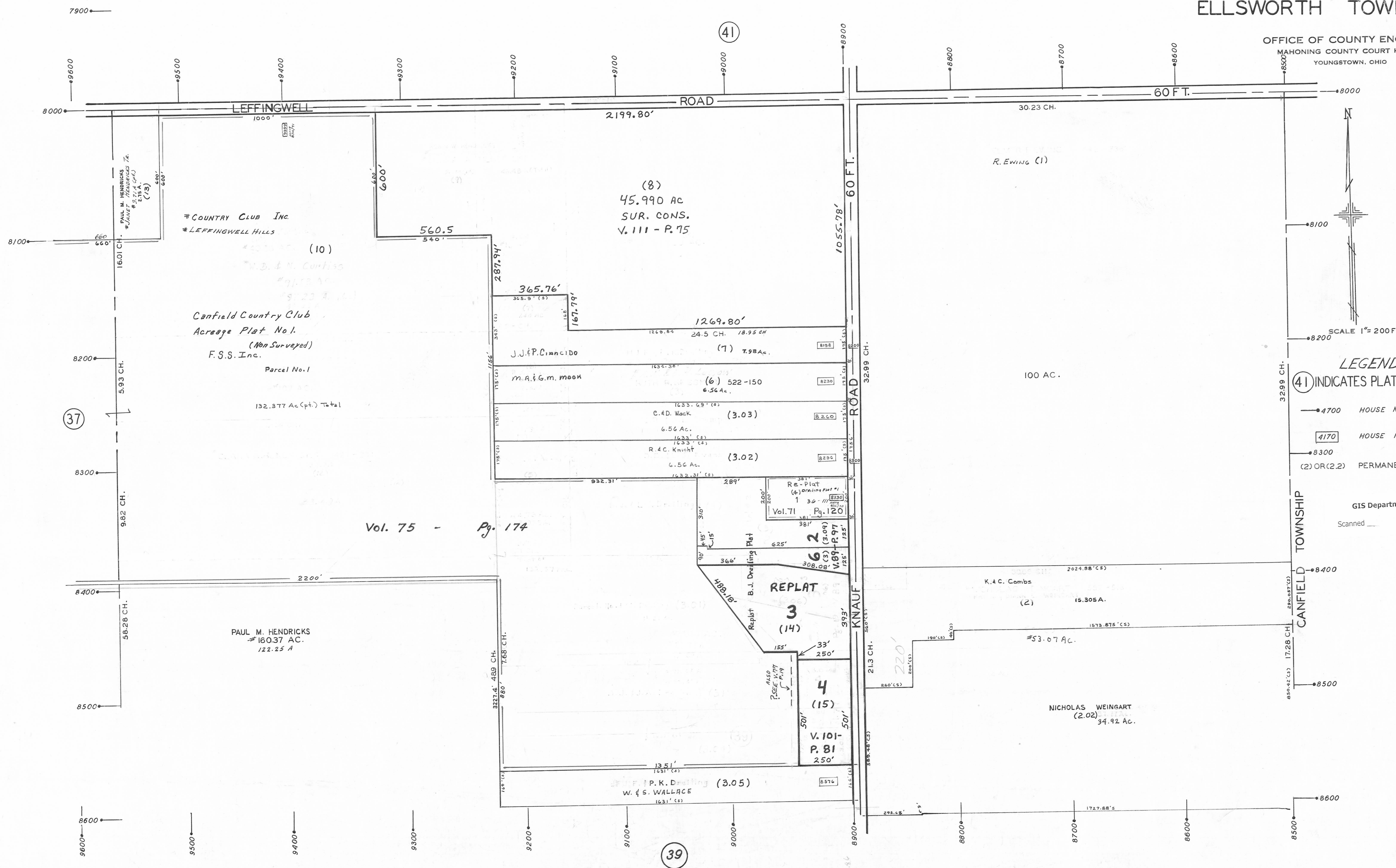


PLATE 40
SECTION No. 5
NORTH HALF
ELLSWORTH TOWNSHIP

OFFICE OF COUNTY ENGINEER
MAHONING COUNTY COURT HOUSE
YOUNGSTOWN, OHIO



LEGEND

- ④ INDICATES PLATE NUMBER
- 4700 HOUSE NUMBERING GRID
- 4170 HOUSE NUMBER
- 8300 PERMANENT PARCEL NO.
- (2) OR (2.2) PERMANENT PARCEL NO.
- GIS Department
- Scanned _____

37

39

41