

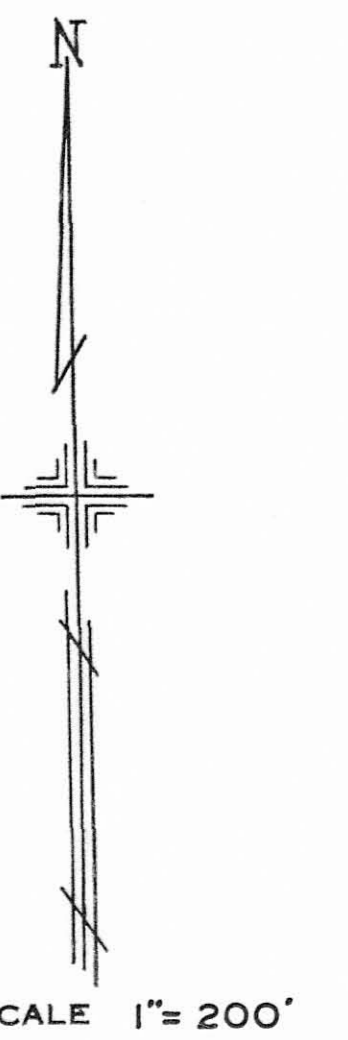
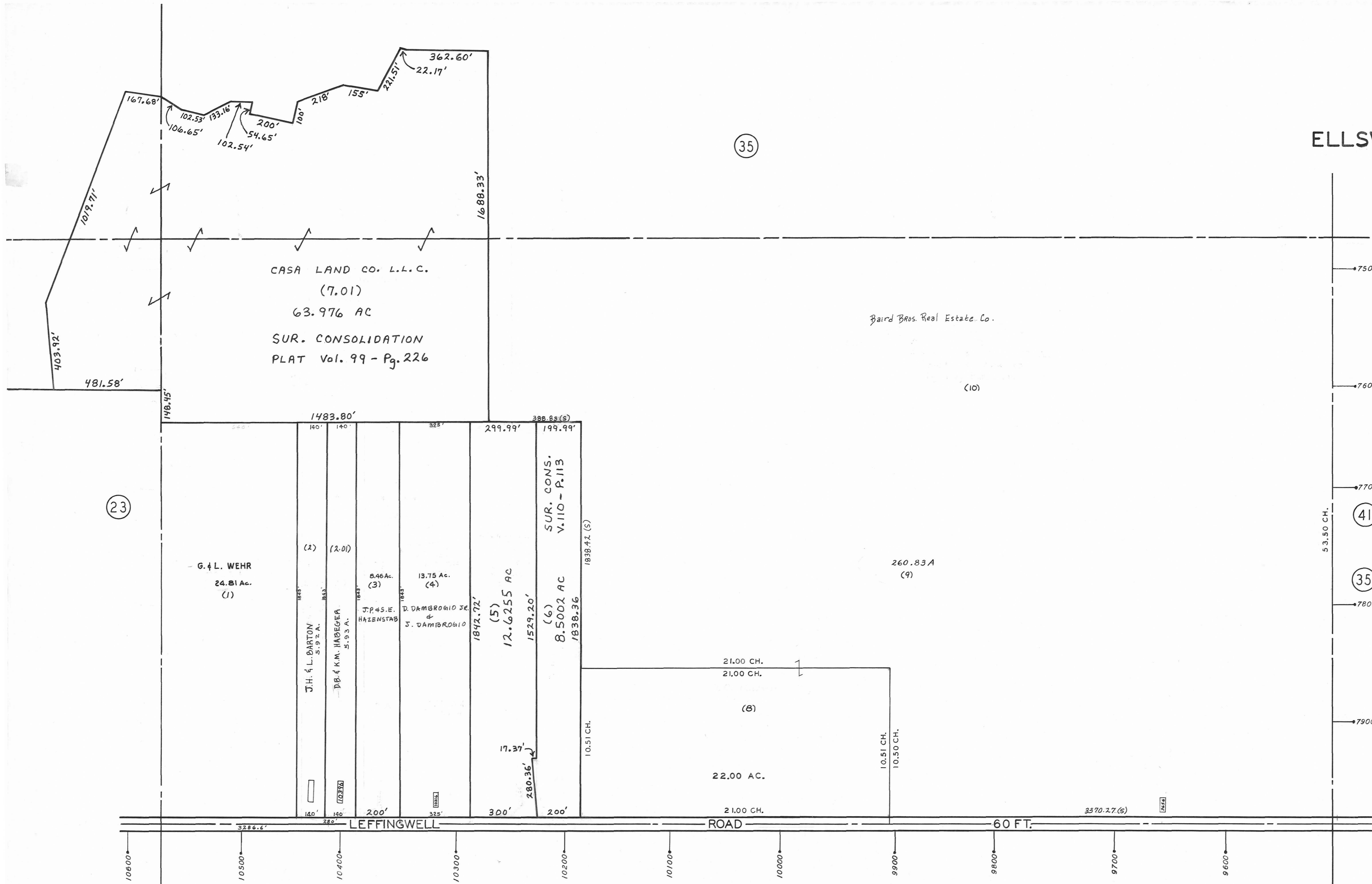
PLATE 36

SECTION No. 7

SOUTH HALF

ELLSWORTH TOWNSHIP

OFFICE OF COUNTY ENGINEER
MAHONING COUNTY COURT HOUSE
YOUNGSTOWN, OHIO



- LEGEND**
- (35) INDICATES PLATE NUMBER
 - 4700 HOUSE NUMBERING GRID
 - 4170 HOUSE NUMBER
 - (2) OR (2.2) PERMANENT PARCEL NO.

GIS Department
Scanned

(35)

(23)

(41)

(37)