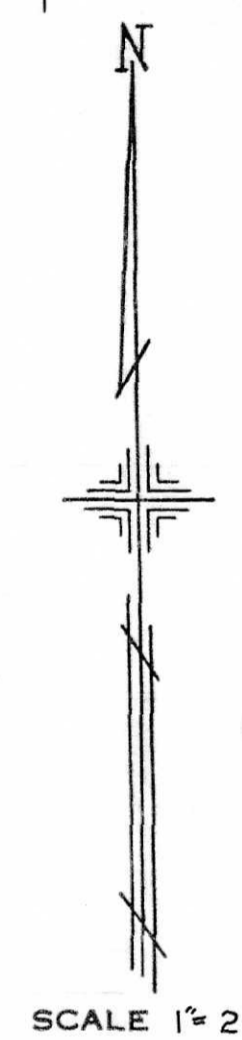
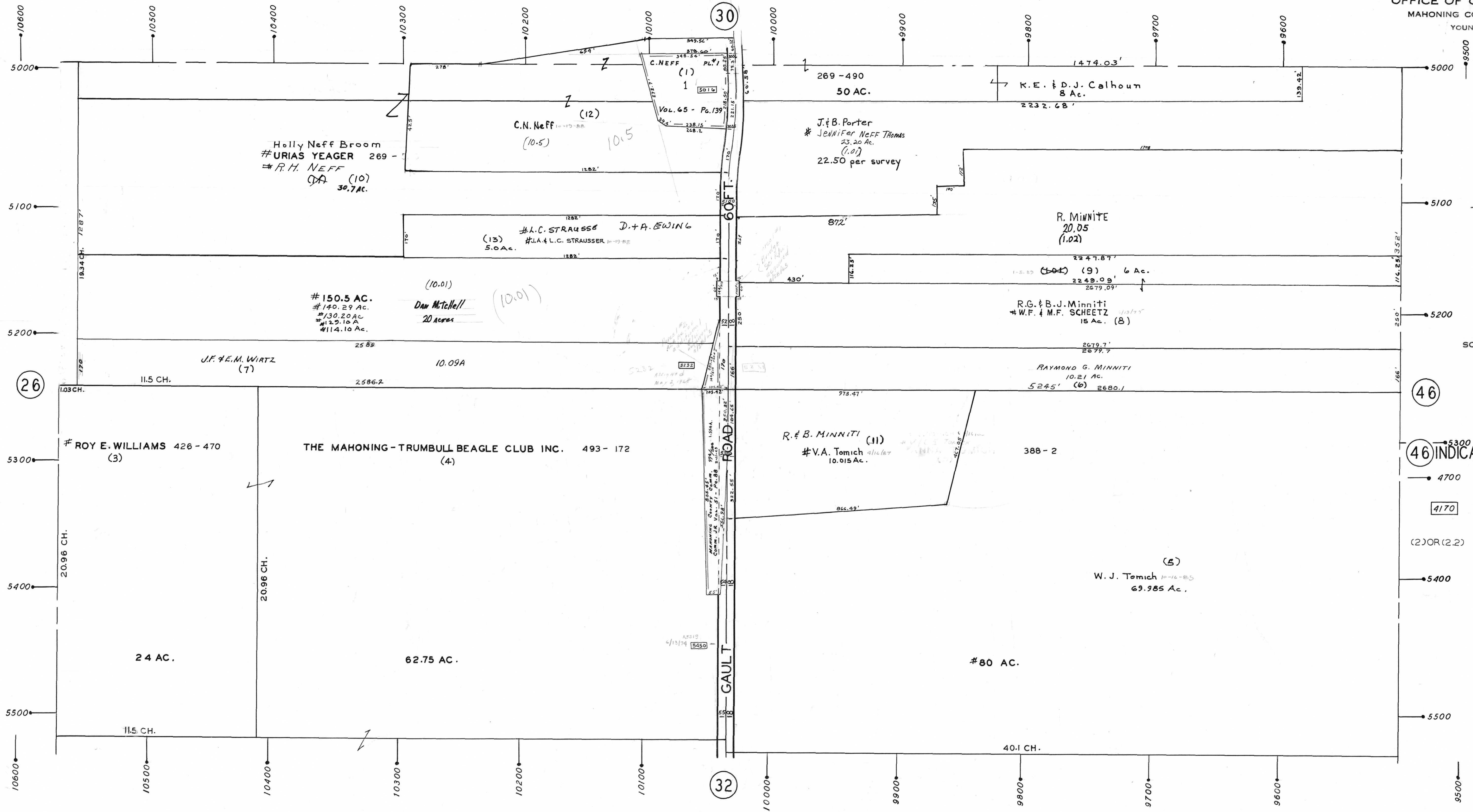


PLATE 31  
SECTION No. 17  
NORTH HALF  
ELLSWORTH TOWNSHIP

OFFICE OF COUNTY ENGINEER  
MAHONING COUNTY COURT HOUSE  
YOUNGSTOWN, OHIO



**LEGEND**  
 (46) INDICATES PLATE NUMBER  
 4700 HOUSE NUMBERING GRID  
 4170 HOUSE NUMBER  
 (2) OR (2.2) PERMANENT PARCEL NO.