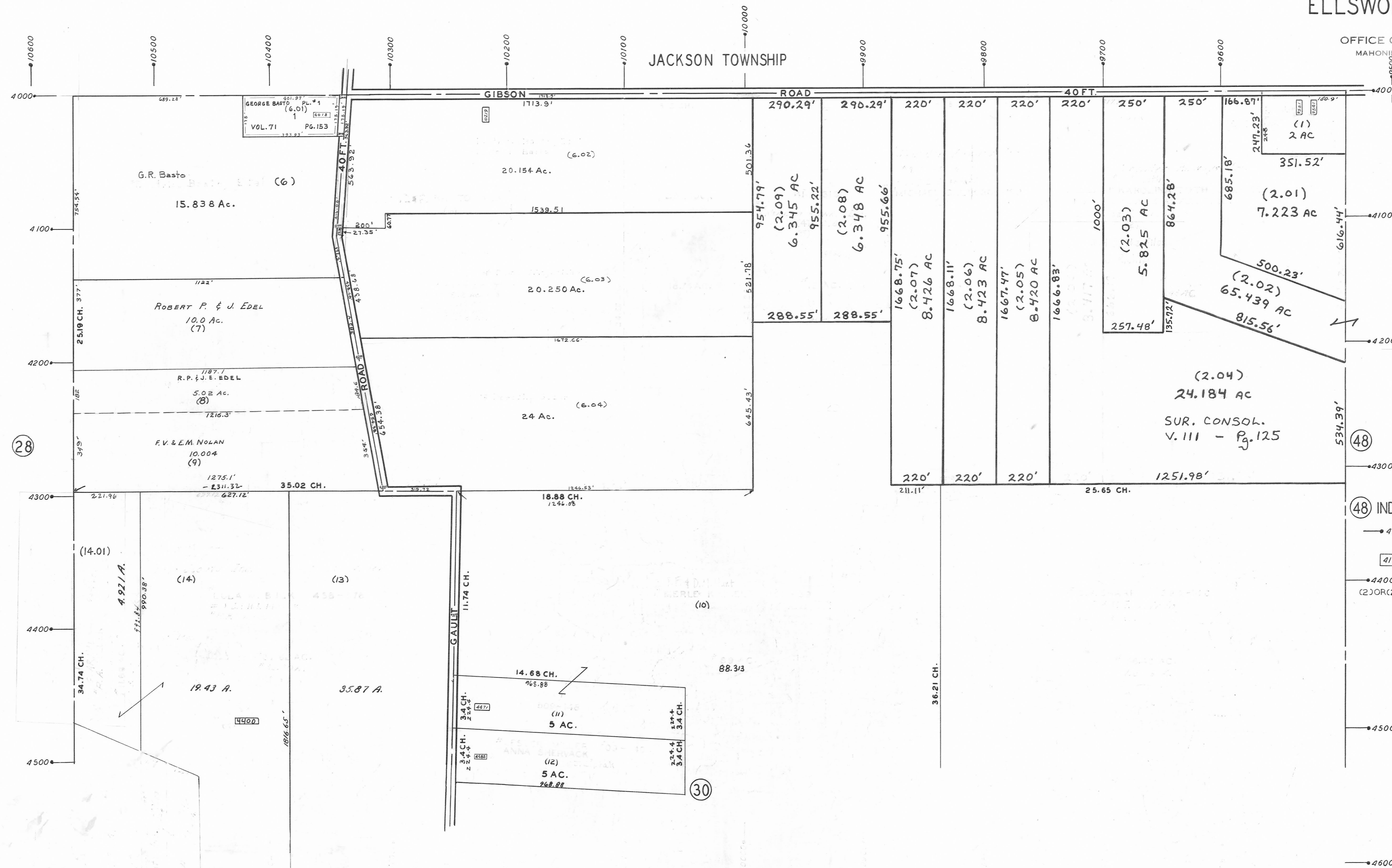


PLATE 29
SECTION No. 24
NORTH HALF
ELLSWORTH TOWNSHIP

OFFICE OF COUNTY ENGINEER
MAHONING COUNTY COURT HOUSE
YOUNGSTOWN, OHIO



SCALE 1" = 200 FT.

LEGEND

- (48) INDICATES PLATE NUMBER
- 4700 HOUSE NUMBERING GRID
- 4170 HOUSE NUMBER
- 4400 PERMANENT PARCEL NO.

GIS Department

Scanned 9-26