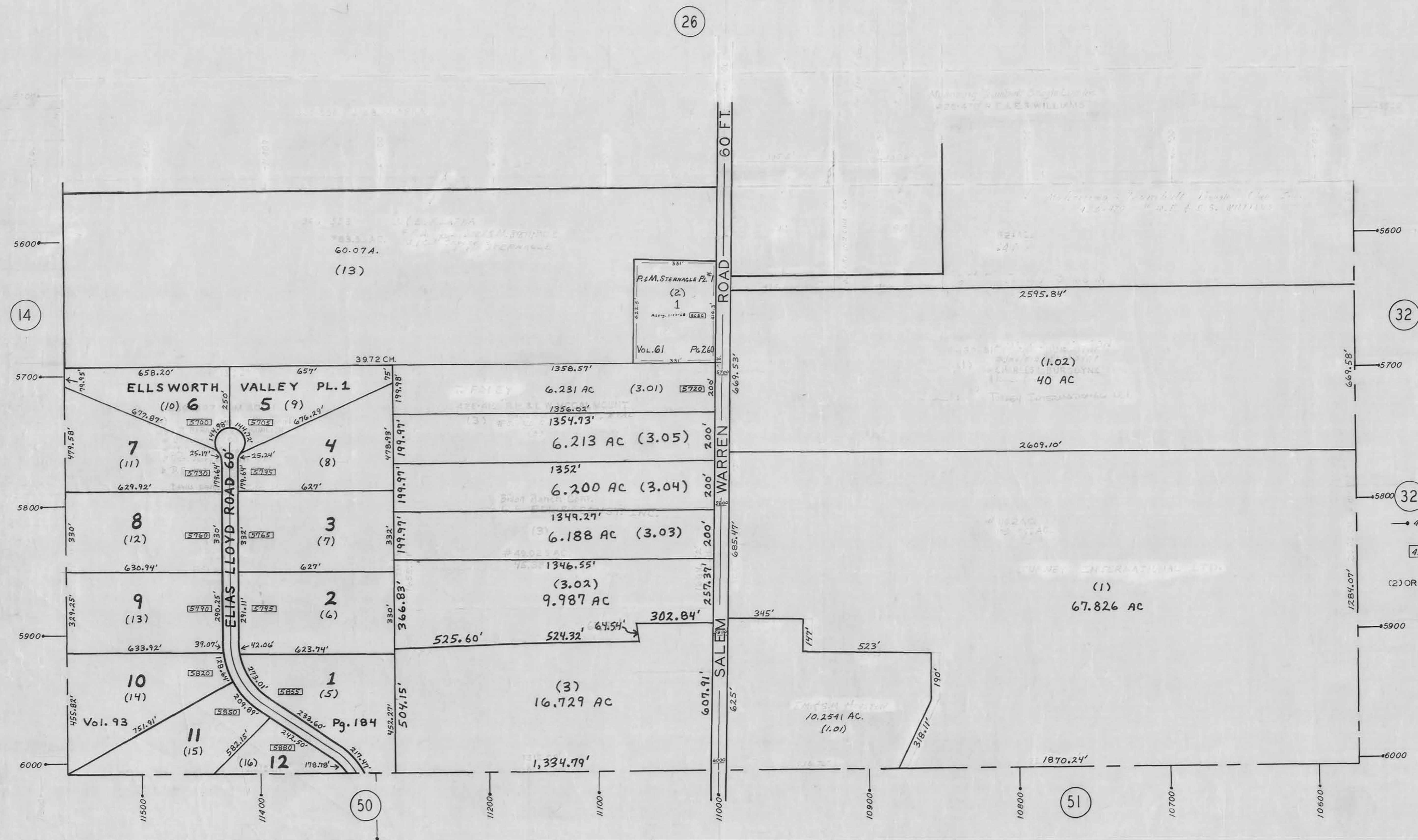
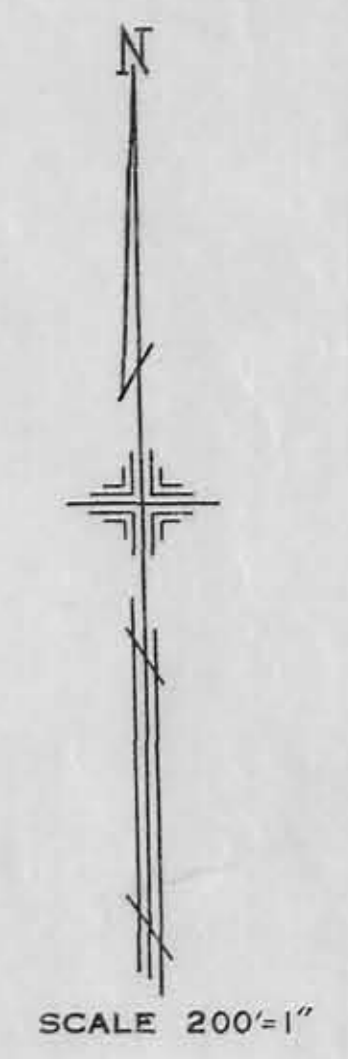


PLATE 25
 SECTION No. 18
 SOUTH HALF
 ELLSWORTH TOWNSHIP

OFFICE OF COUNTY ENGINEER
 MAHONING COUNTY COURT HOUSE
 YOUNGSTOWN, OHIO



- LEGEND**
- 32 INDICATES PLATE NUMBER
 - 4700 HOUSE NUMBERING GRID
 - 4170 HOUSE NUMBER
 - (2) OR (2.2) PERMANENT PARCEL NO.

GIS Department
 8/2/07
 Scanned: _____