

PLATE 21

SECTION No. 3
SOUTH HALF

ELLSWORTH TOWNSHIP

OFFICE OF COUNTY ENGINEER
MAHONING COUNTY COURT HOUSE
YOUNGSTOWN, OHIO



SCALE - 1" = 200 FT.

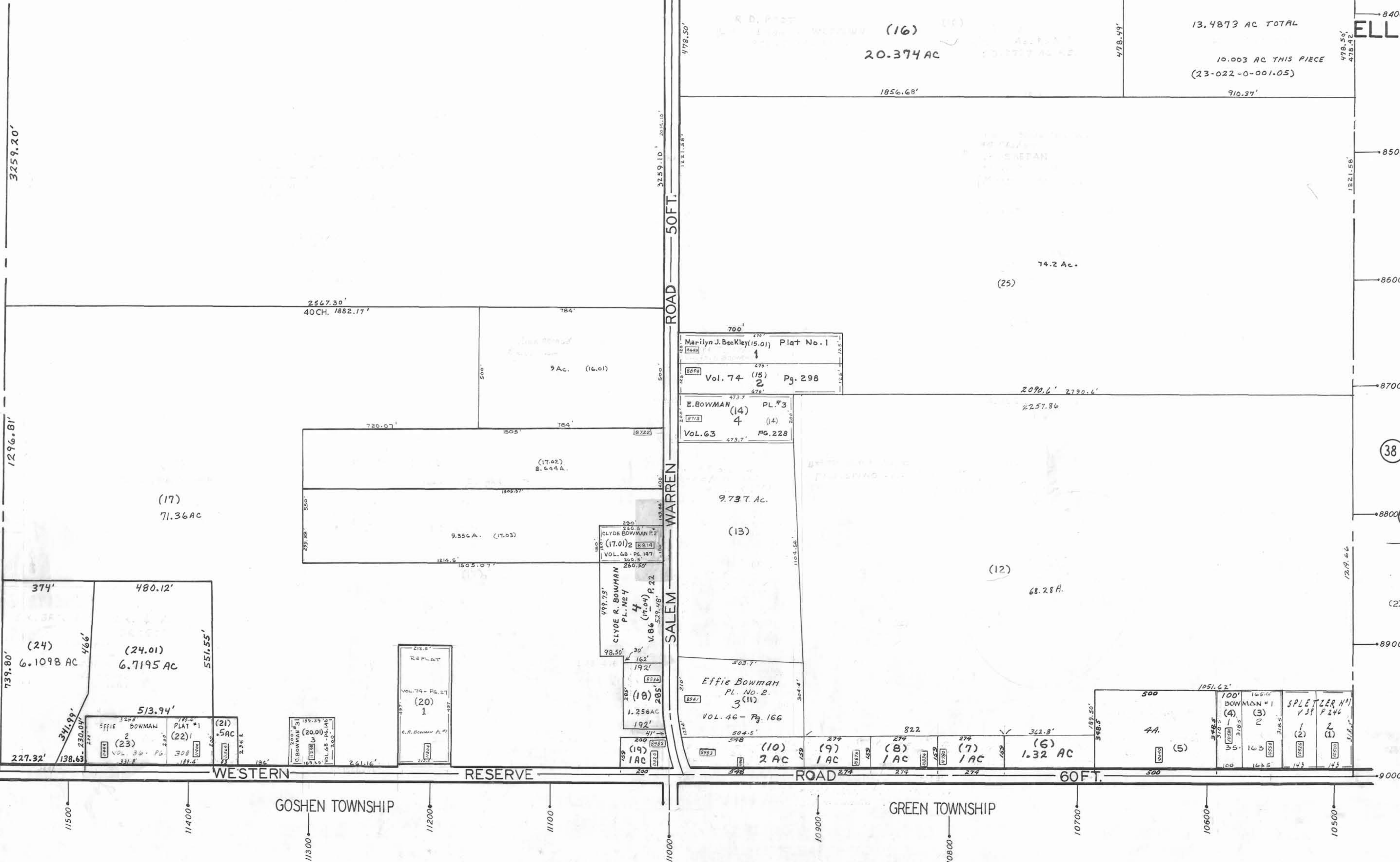
LEGEND

- 22 INDICATES PLATE NUMBER
- 4700 HOUSE NUMBERING GRID
- 4170 HOUSE NUMBER
- (2)OR(22) PERMANENT PARCEL NO.

GIS Department
Scanned 11-21-05
15-2004

22

ROAD - 50 FT. WARREN SALEM



20

38

8900

9000

WESTERN RESERVE ROAD 60 FT.

GOSHEN TOWNSHIP

GREEN TOWNSHIP