

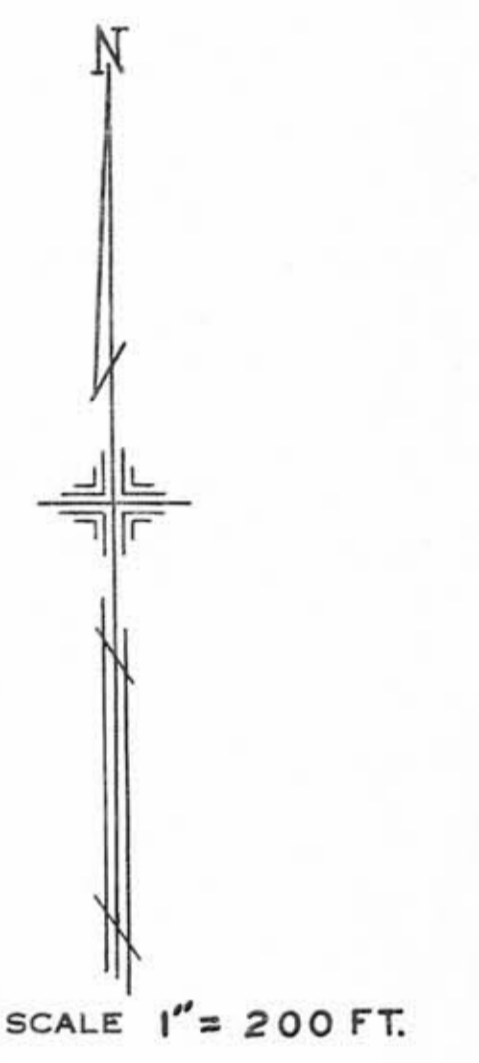
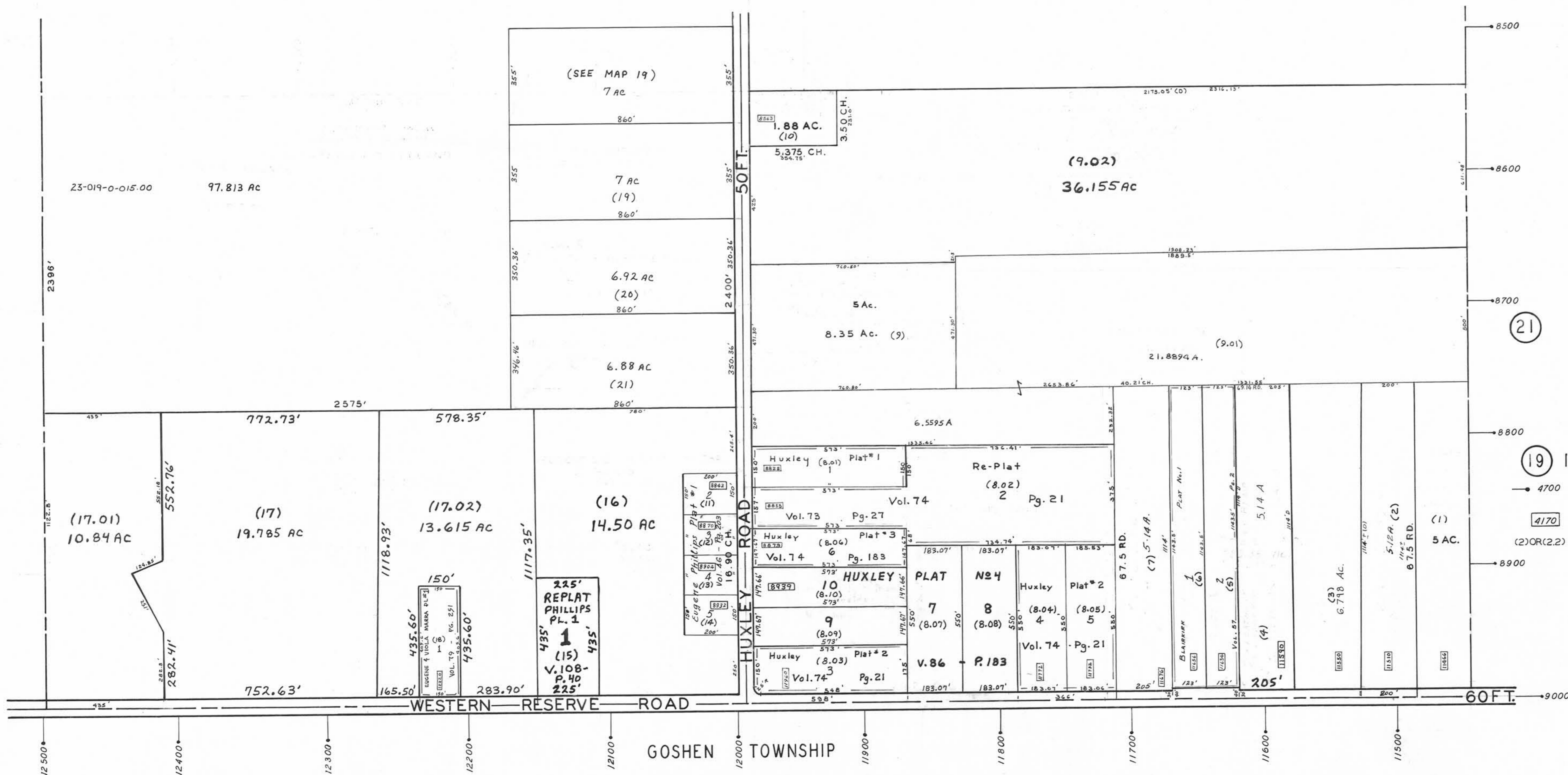
PLATE 20

SECTION No. 2  
SOUTH HALF

ELLSWORTH TOWNSHIP

OFFICE OF COUNTY ENGINEER  
MAHONING COUNTY COURT HOUSE  
YOUNGSTOWN, OHIO

19



21

**LEGEND**

19 INDICATES PLATE NUMBER

4700 HOUSE NUMBERING GRID

4170 HOUSE NUMBER

(2) OR (2.2) PERMANENT PARCEL NO.

GIS Department  
1-10-07  
Scanned: \_\_\_\_\_