

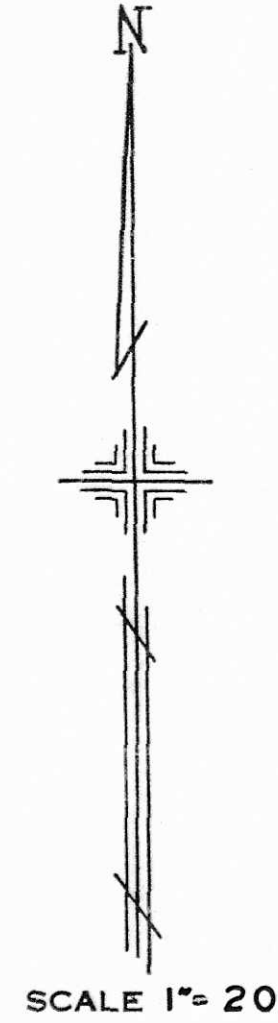
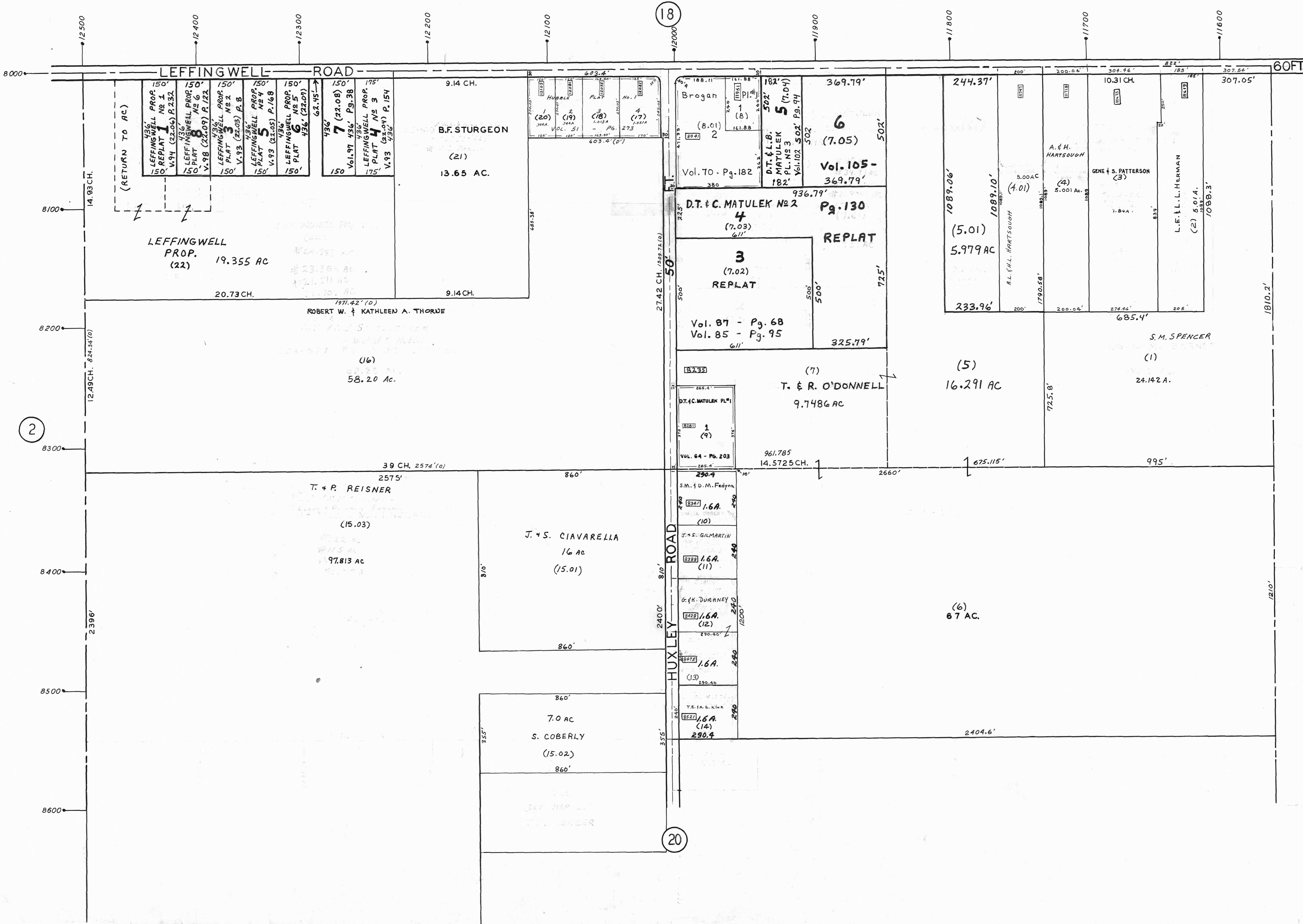
PLATE 19

SECTION No. 2

NORTH HALF

ELLSWORTH TOWNSHIP

OFFICE OF COUNTY ENGINEER
MAHONING COUNTY COURT HOUSE
YOUNGSTOWN, OHIO



(22)

LEGEND

- (18) INDICATES PLATE NUMBER
- 4700 HOUSE NUMBERING GRID
- 4710 HOUSE NUMBER
- (2) OR (2.2) PERMANENT PARCEL NO.