

ELLSWORTH TOWNSHIP

OFFICE OF COUNTY ENGINEER
MAHONING COUNTY COURT HOUSE
YOUNGSTOWN, OHIO

SOUTH HALF



SCALE 1"=200'

LEGEND

(49) INDICATES PLATE NUMBER

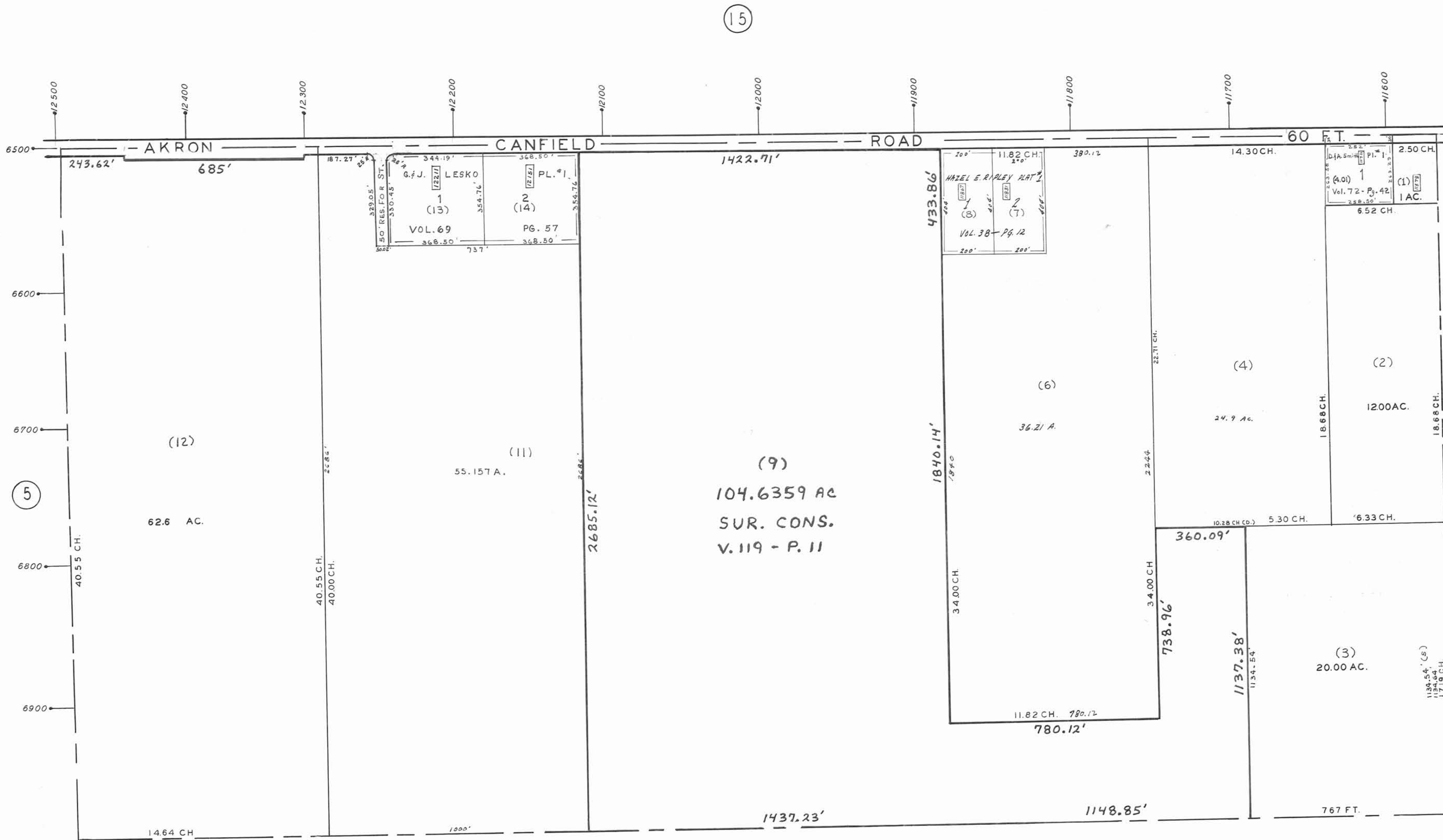
→ 4700 HOUSE NUMBERING GRID

4170 HOUSE NUMBER

(2) OR (2.2) PERMANENT PARCEL NO.

GIS Department

Scanned _____



(15)

(5)

(49)

(17)