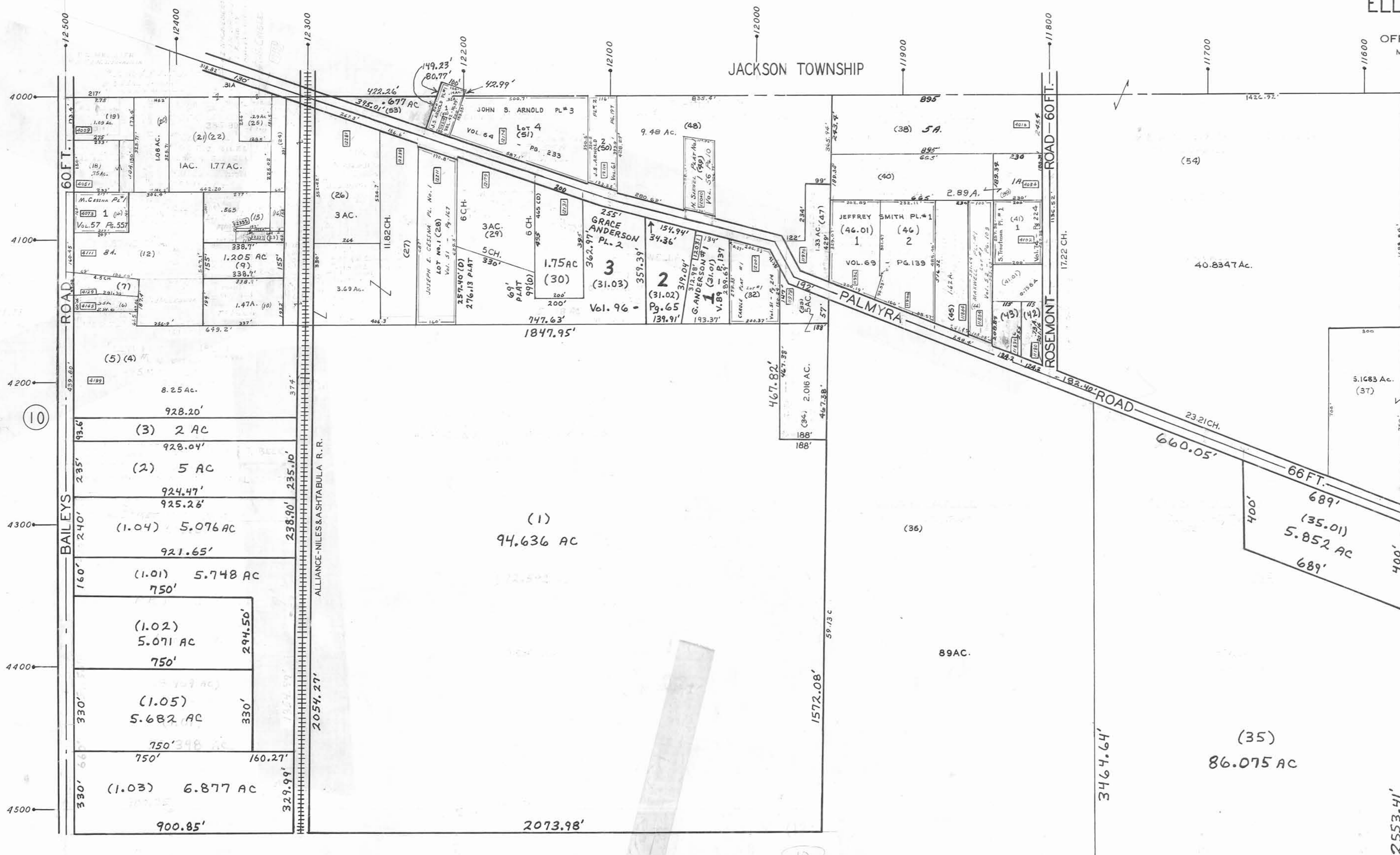


PLATE II  
SECTION NO. 22  
NORTH HALF  
ELLSWORTH TOWNSHIP

OFFICE OF COUNTY ENGINEER  
MAHONING COUNTY COURT HOUSE  
YOUNGSTOWN, OHIO



SCALE 1"=200 FT.

- LEGEND**
- (28) INDICATES PLATE NUMBER
  - 4700 HOUSE NUMBERING GRID
  - [4170] HOUSE NUMBER
  - (2) OR (2.2) PERMANENT PARCEL NO.

GIS Department  
Scanned  
5-21-09