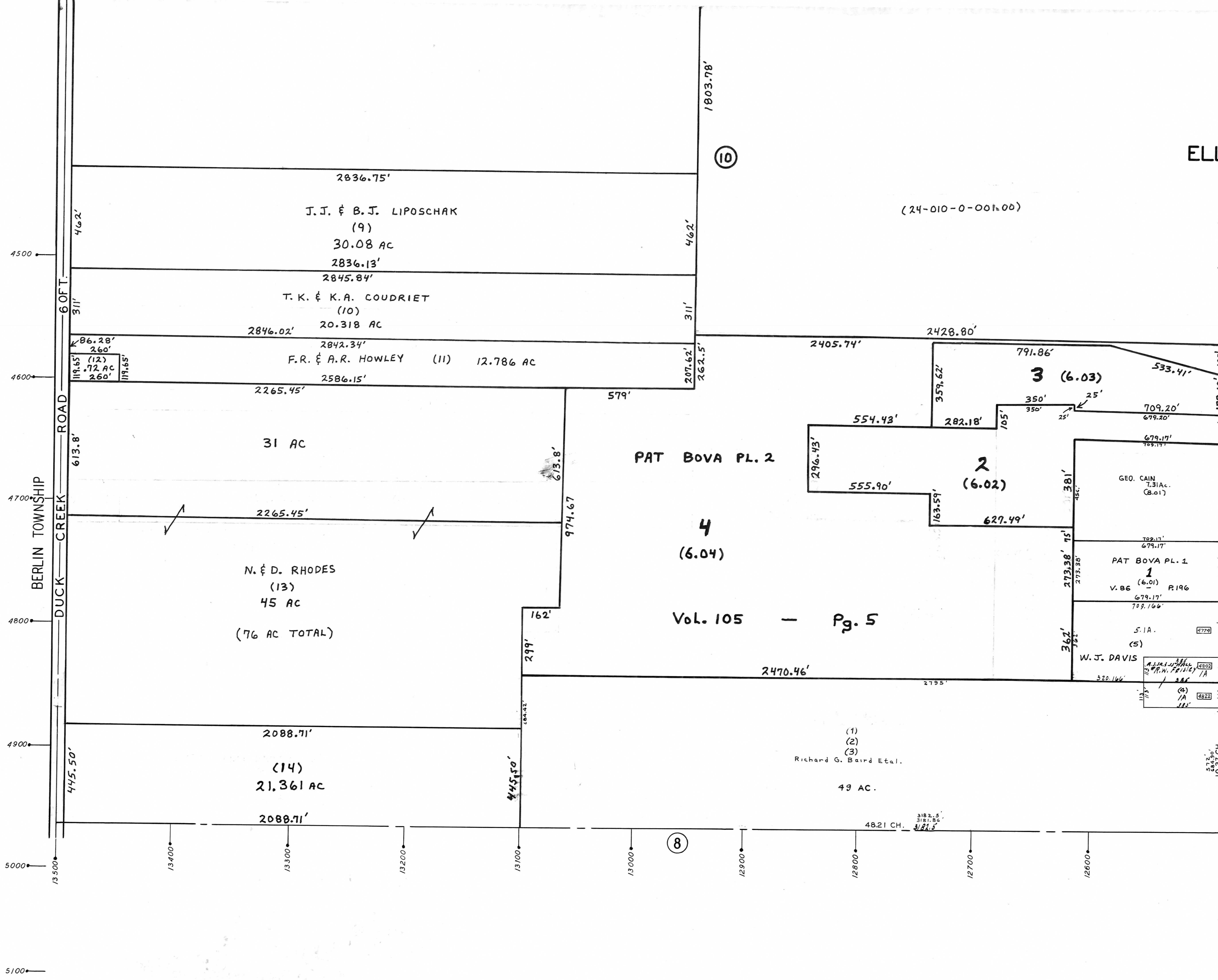
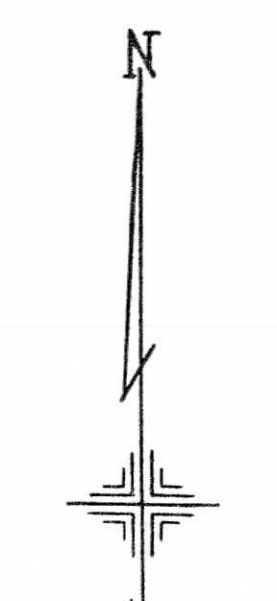


PLATE 9
SECTION NO. 21
SOUTH HALF
ELLSWORTH TOWNSHIP



OFFICE OF COUNTY ENGINEER
MAHONING COUNTY COURT HOUSE
YOUNGSTOWN, OHIO



SCALE 1" = 200 FT.

- LEGEND**
- (12) INDICATES PLATE NUMBER
 - 4700 HOUSE NUMBERING GRID
 - 4170 HOUSE NUMBER
 - (2) OR (2.2) PERMANENT PARCEL NO.

5100

5100