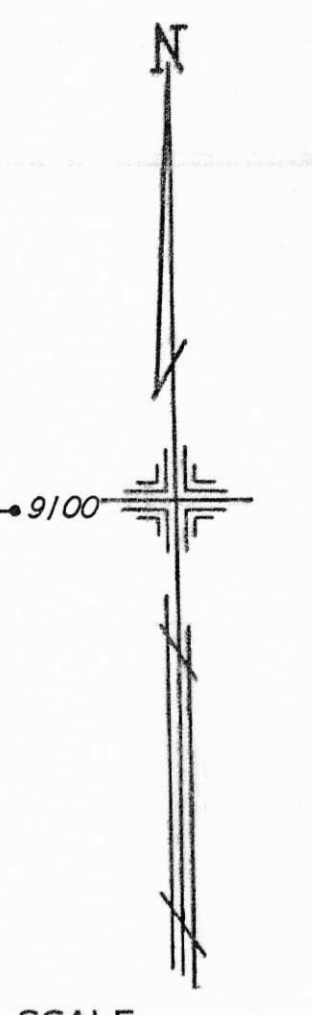


PLATE 196

SECTION No. 3

SMITH TWP.

OFFICE OF COUNTY ENGINEER
MAHONING COUNTY COURT HOUSE
YOUNGSTOWN, OHIO



201

LEGEND

(21)

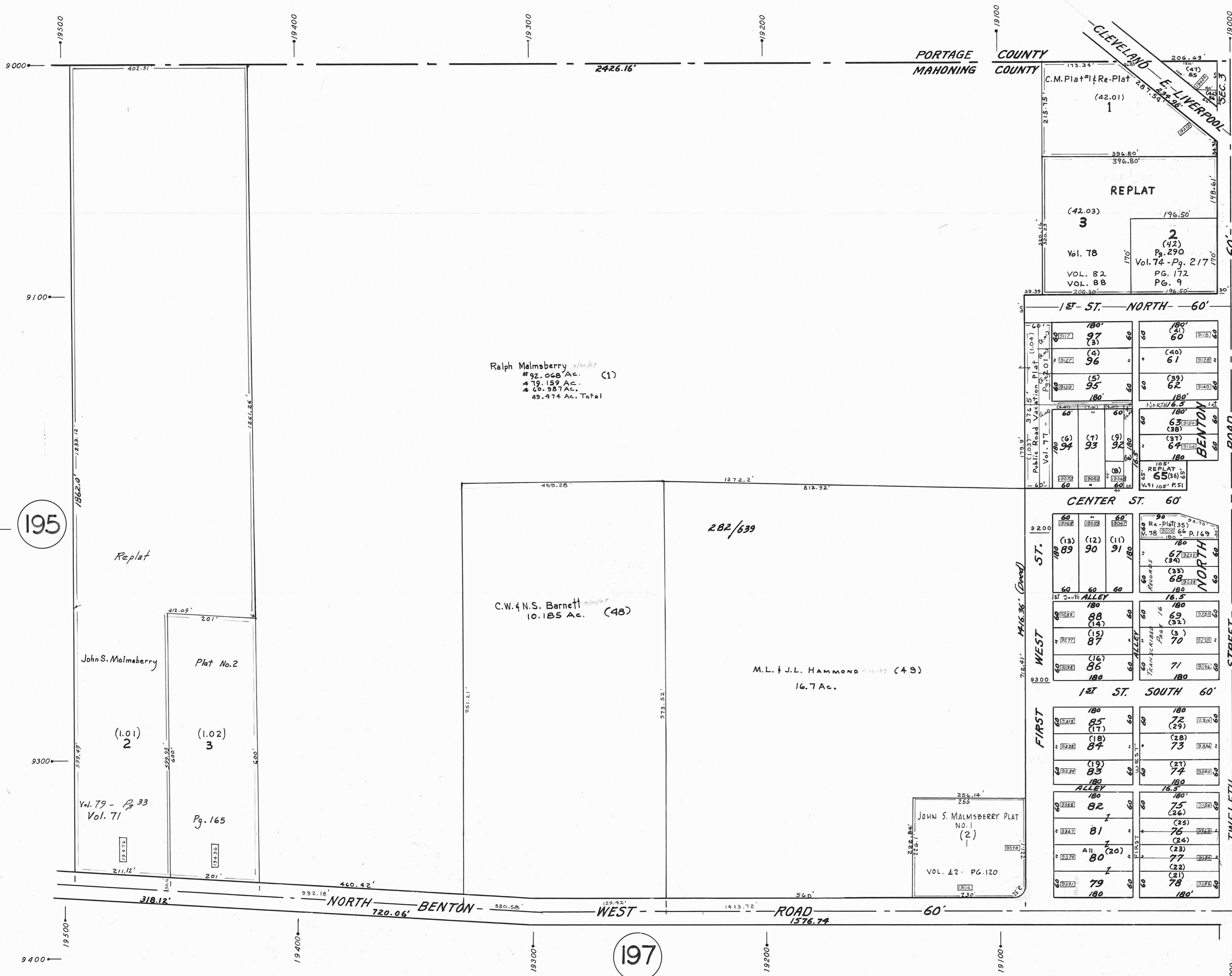
PLATE NUMBER

4700

HOUSE NUMBERING GRID

4170

HOUSE NUMBER



PORTAGE COUNTY
MAHONING COUNTY

CLEVELAND
E. LIVERPOOL
SEC. 3
SEC. 2

C.M. Plat & Re-Plat
(42.01)
1

REPLAT
(42.03)
3
Vol. 78
VOL. 82
VOL. 88

2
(42)
Pg. 290
Vol. 74 - Pg. 217
Pg. 172
Pg. 9

1st ST. NORTH - 60'

Public Road Vacation Plat (1104)
Pg. 301
Vol. 77

180' 97 (3) 60
180' 96 (4) 60
180' 95 (5) 60
180' 94 (6) 60
180' 93 (7) 60
180' 92 (8) 60
180' 91 (9) 60
180' 90 (10) 60
180' 89 (11) 60
180' 88 (12) 60
180' 87 (13) 60
180' 86 (14) 60
180' 85 (15) 60
180' 84 (16) 60
180' 83 (17) 60
180' 82 (18) 60
180' 81 (19) 60
180' 80 (20) 60
180' 79 (21) 60
180' 78 (22) 60
180' 77 (23) 60
180' 76 (24) 60
180' 75 (25) 60
180' 74 (26) 60
180' 73 (27) 60
180' 72 (28) 60
180' 71 (29) 60
180' 70 (30) 60
180' 69 (31) 60
180' 68 (32) 60
180' 67 (33) 60
180' 66 (34) 60
180' 65 (35) 60
180' 64 (36) 60
180' 63 (37) 60
180' 62 (38) 60
180' 61 (39) 60
180' 60 (40) 60

1st ST. NORTH - 60'

Center St. 60'

1st St. South 60'

West Street

Twelfth Street

1st St. South 60'

Center St. 60'

1st St. North 60'

Public Road Vacation Plat (1104)
Pg. 301
Vol. 77

180' 97 (3) 60
180' 96 (4) 60
180' 95 (5) 60
180' 94 (6) 60
180' 93 (7) 60
180' 92 (8) 60
180' 91 (9) 60
180' 90 (10) 60
180' 89 (11) 60
180' 88 (12) 60
180' 87 (13) 60
180' 86 (14) 60
180' 85 (15) 60
180' 84 (16) 60
180' 83 (17) 60
180' 82 (18) 60
180' 81 (19) 60
180' 80 (20) 60
180' 79 (21) 60
180' 78 (22) 60
180' 77 (23) 60
180' 76 (24) 60
180' 75 (25) 60
180' 74 (26) 60
180' 73 (27) 60
180' 72 (28) 60
180' 71 (29) 60
180' 70 (30) 60
180' 69 (31) 60
180' 68 (32) 60
180' 67 (33) 60
180' 66 (34) 60
180' 65 (35) 60
180' 64 (36) 60
180' 63 (37) 60
180' 62 (38) 60
180' 61 (39) 60
180' 60 (40) 60

1st St. South 60'

Center St. 60'

1st St. North 60'

Public Road Vacation Plat (1104)
Pg. 301
Vol. 77

180' 97 (3) 60
180' 96 (4) 60
180' 95 (5) 60
180' 94 (6) 60
180' 93 (7) 60
180' 92 (8) 60
180' 91 (9) 60
180' 90 (10) 60
180' 89 (11) 60
180' 88 (12) 60
180' 87 (13) 60
180' 86 (14) 60
180' 85 (15) 60
180' 84 (16) 60
180' 83 (17) 60
180' 82 (18) 60
180' 81 (19) 60
180' 80 (20) 60
180' 79 (21) 60
180' 78 (22) 60
180' 77 (23) 60
180' 76 (24) 60
180' 75 (25) 60
180' 74 (26) 60
180' 73 (27) 60
180' 72 (28) 60
180' 71 (29) 60
180' 70 (30) 60
180' 69 (31) 60
180' 68 (32) 60
180' 67 (33) 60
180' 66 (34) 60
180' 65 (35) 60
180' 64 (36) 60
180' 63 (37) 60
180' 62 (38) 60
180' 61 (39) 60
180' 60 (40) 60

1st St. South 60'

Center St. 60'

1st St. North 60'

Public Road Vacation Plat (1104)
Pg. 301
Vol. 77

180' 97 (3) 60
180' 96 (4) 60
180' 95 (5) 60
180' 94 (6) 60
180' 93 (7) 60
180' 92 (8) 60
180' 91 (9) 60
180' 90 (10) 60
180' 89 (11) 60
180' 88 (12) 60
180' 87 (13) 60
180' 86 (14) 60
180' 85 (15) 60
180' 84 (16) 60
180' 83 (17) 60
180' 82 (18) 60
180' 81 (19) 60
180' 80 (20) 60
180' 79 (21) 60
180' 78 (22) 60
180' 77 (23) 60
180' 76 (24) 60
180' 75 (25) 60
180' 74 (26) 60
180' 73 (27) 60
180' 72 (28) 60
180' 71 (29) 60
180' 70 (30) 60
180' 69 (31) 60
180' 68 (32) 60
180' 67 (33) 60
180' 66 (34) 60
180' 65 (35) 60
180' 64 (36) 60
180' 63 (37) 60
180' 62 (38) 60
180' 61 (39) 60
180' 60 (40) 60

1st St. South 60'

Center St. 60'

1st St. North 60'

JOHN S. MALMESBERRY PLAT
NO. 1
(2)
VOL. 12 PG. 120

197

195

Replat

John S. Malmesberry

Plat No. 2

(1.01)
2

(1.02)
3

Vol. 79 - Pg. 33
Vol. 71

Pg. 165

Ralph Malmesberry 9/20/87
#92.068 Ac. (1)
#79.159 Ac.
#60.987 Ac.
49.474 Ac. Total

C.W. & N.S. Barnett 9/10/87
10.185 Ac. (48)

M.L. & J.L. HAMMOND 9/12/87 (49)
16.7 Ac.

282/639

JOHN S. MALMESBERRY PLAT
NO. 1
(2)
VOL. 12 PG. 120