

188

186

192

160

Ann Court
Belvis Wilson
H. B. Z. WILSON
C. D. & V. Wade
(2)
14.97 AC
7.76 AC

L. & G. WILLIAMS
Alfred & Shirley Wilson
7.201 AC
(2.01)

IDA ELLIOTT PLAT No. 2
VOL. 64 - Pg. 283
2
(3)

DISCOVERY WELL SERVICES, INC.
J.M. GLOVER & R.M. WENTZEL, JR.
DISCOVERY EXCAVATING, INC.
SUN EXCAVATING, INC. AN OHIO 490/623
C. L. & E. I. Ring
(1)
54.49 A. (Pt.)
58.59 A. (Pt.)
52.11 AC # 47.44 AC
38.009 AC
38.231 AC

Barbra A. Blair
K.W. & M. DAVIS
C.L. & G.M. WADE 711/394
Ida Elliott
S. W. Carpenter
(4)
57.5 A. (Pt.)
52.40 A. (Pt.)
50.40 A.
20 AC
18.31 A.
568/292

L.D. & M.L. GARY
D. Wade
(5)
15.43 AC

W. L. & V. BARKER 5.10 A
W. L. & V. M. BARKER
L.D. Gary (6)

60' ROAD BANDY

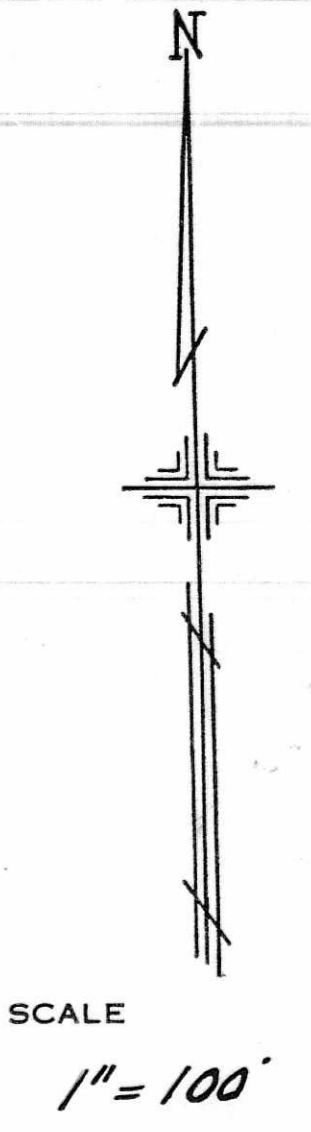
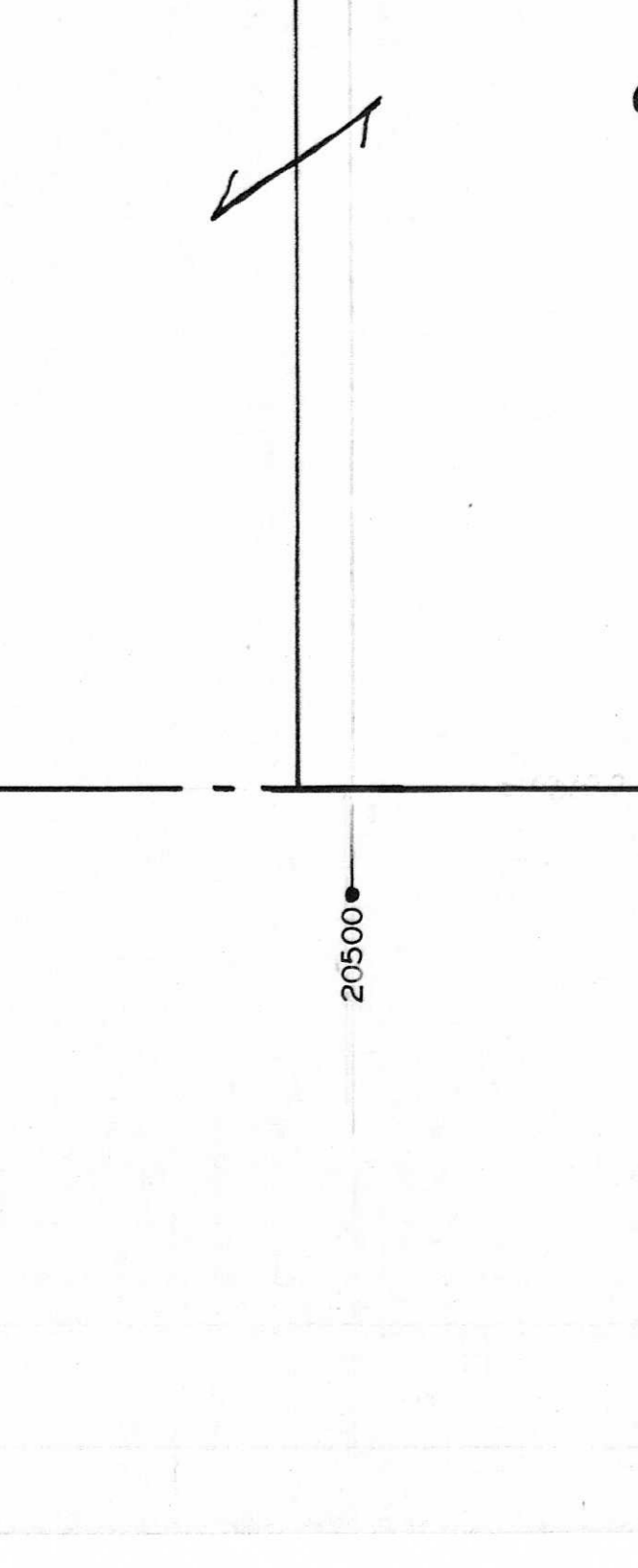
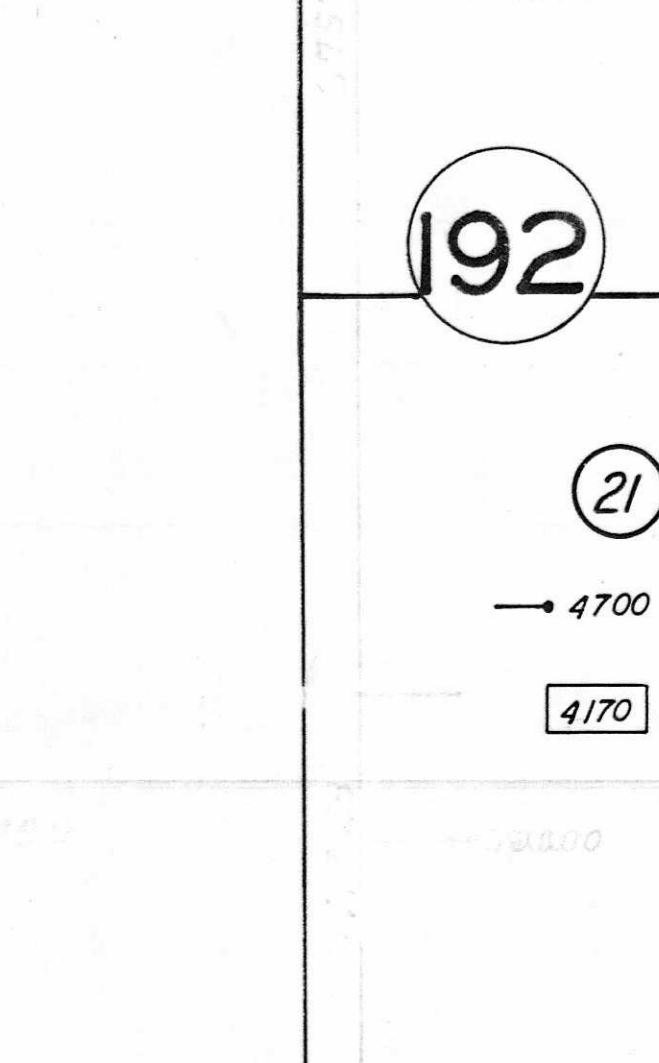
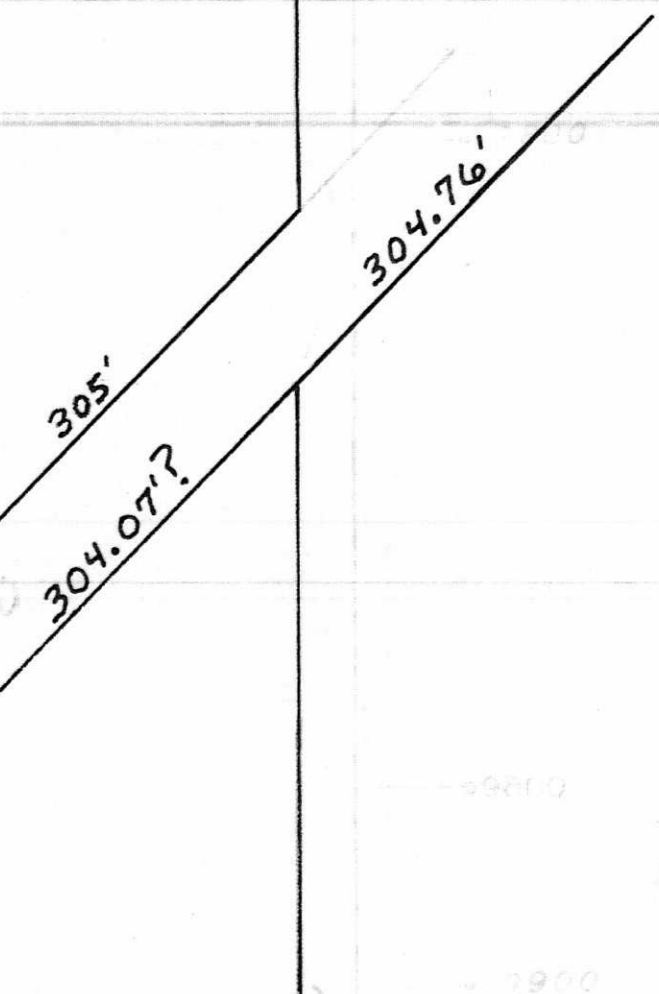
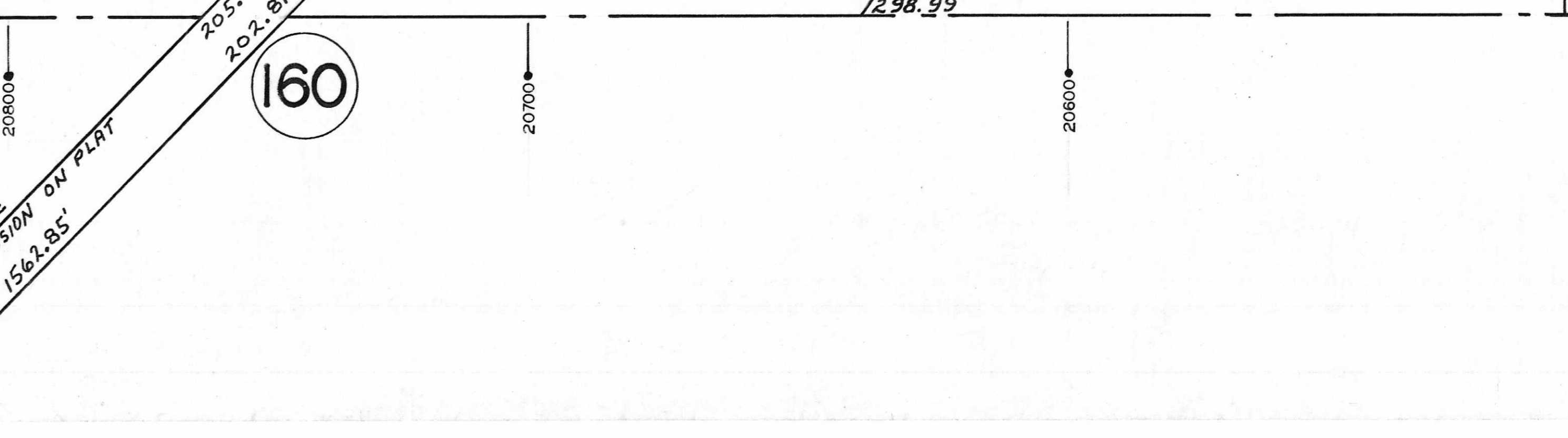
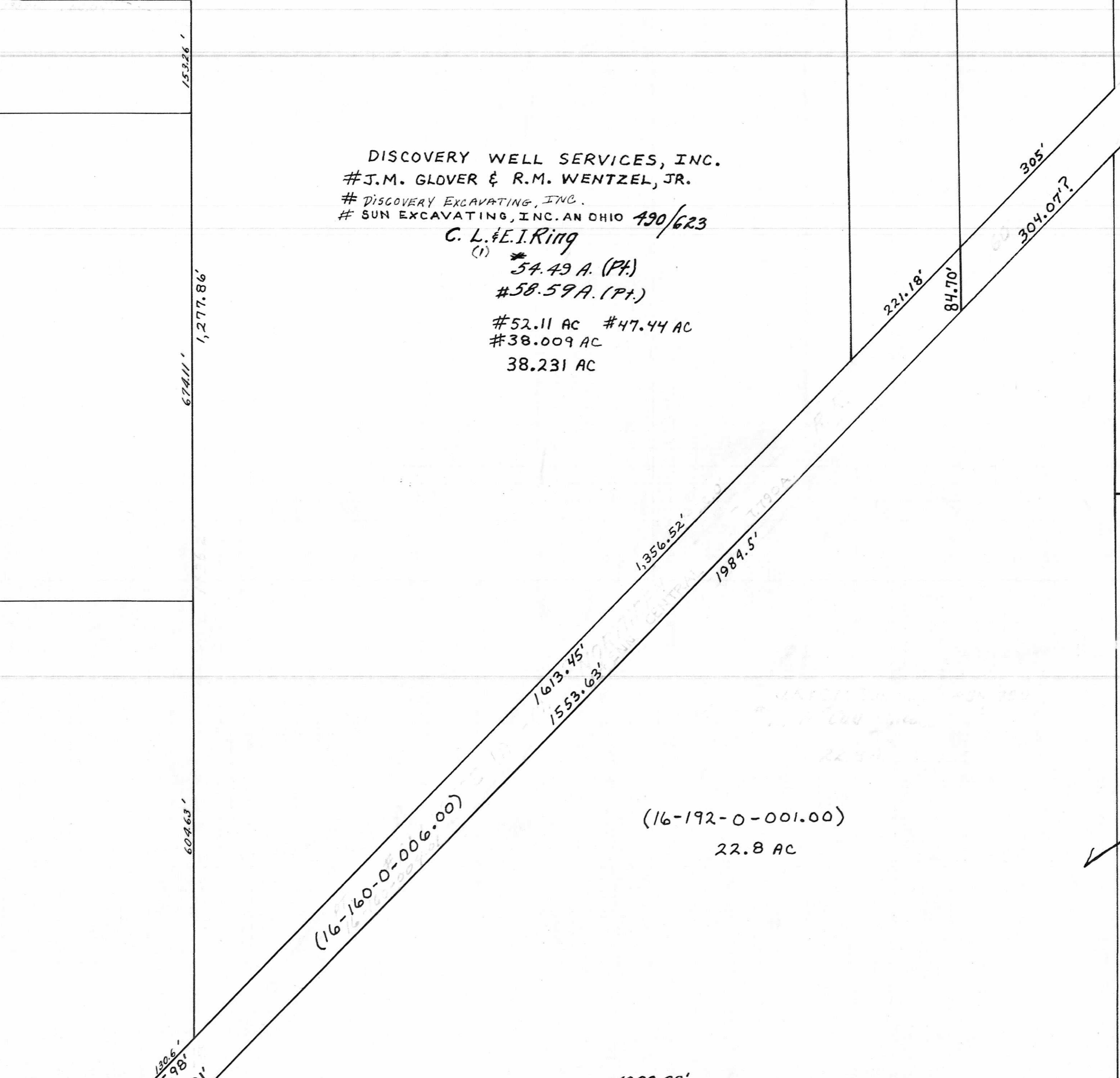
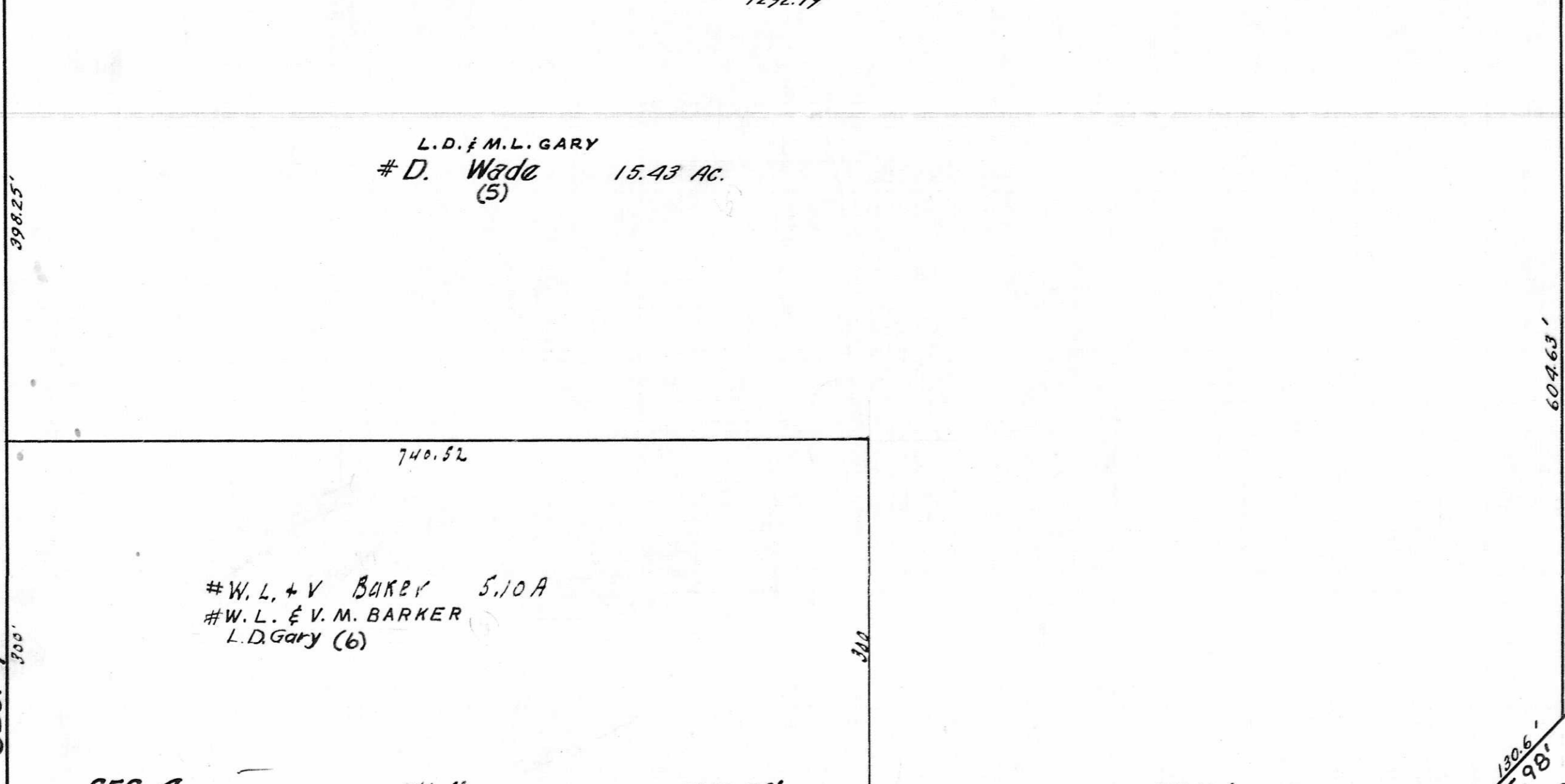
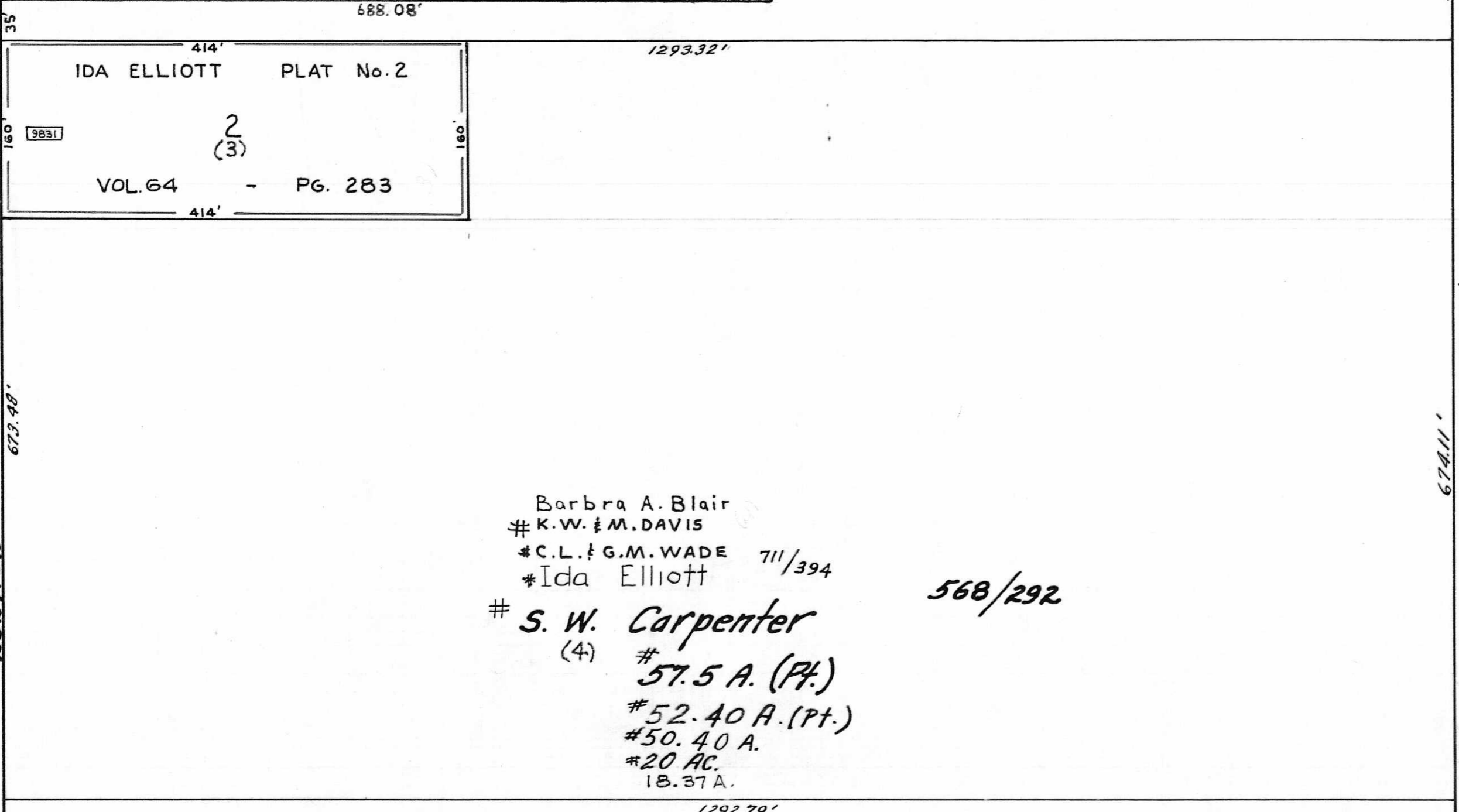
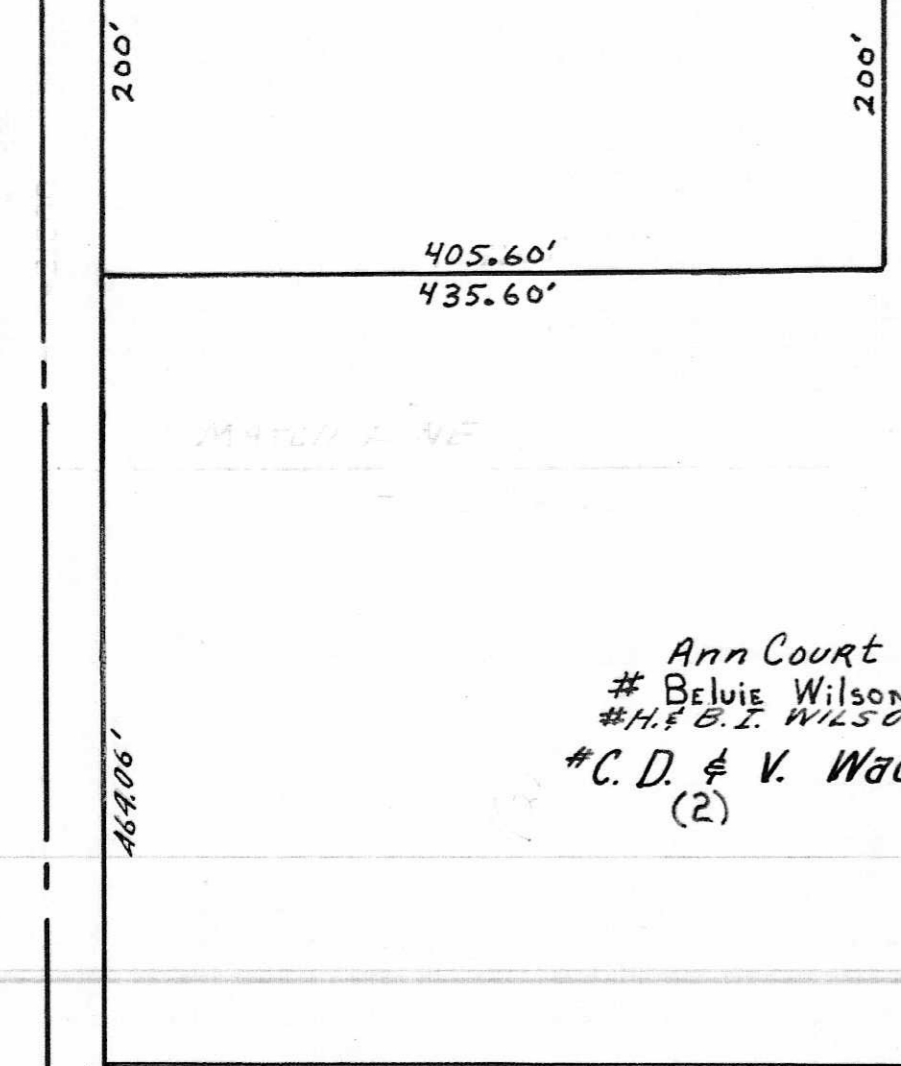
SEC. 5
SEC. 4
SEC. 9

9800

9900

10000

10100



LEGEND
21 PLATE NUMBER
4700 HOUSE NUMBERING GRID
4170 HOUSE NUMBER

(16-192-0-001.00)
22.8 AC

(16-192-0-001.00)
49.26 AC

1656.75' To &
No INSIDE DIMENSION ON PLAT
1562.85'