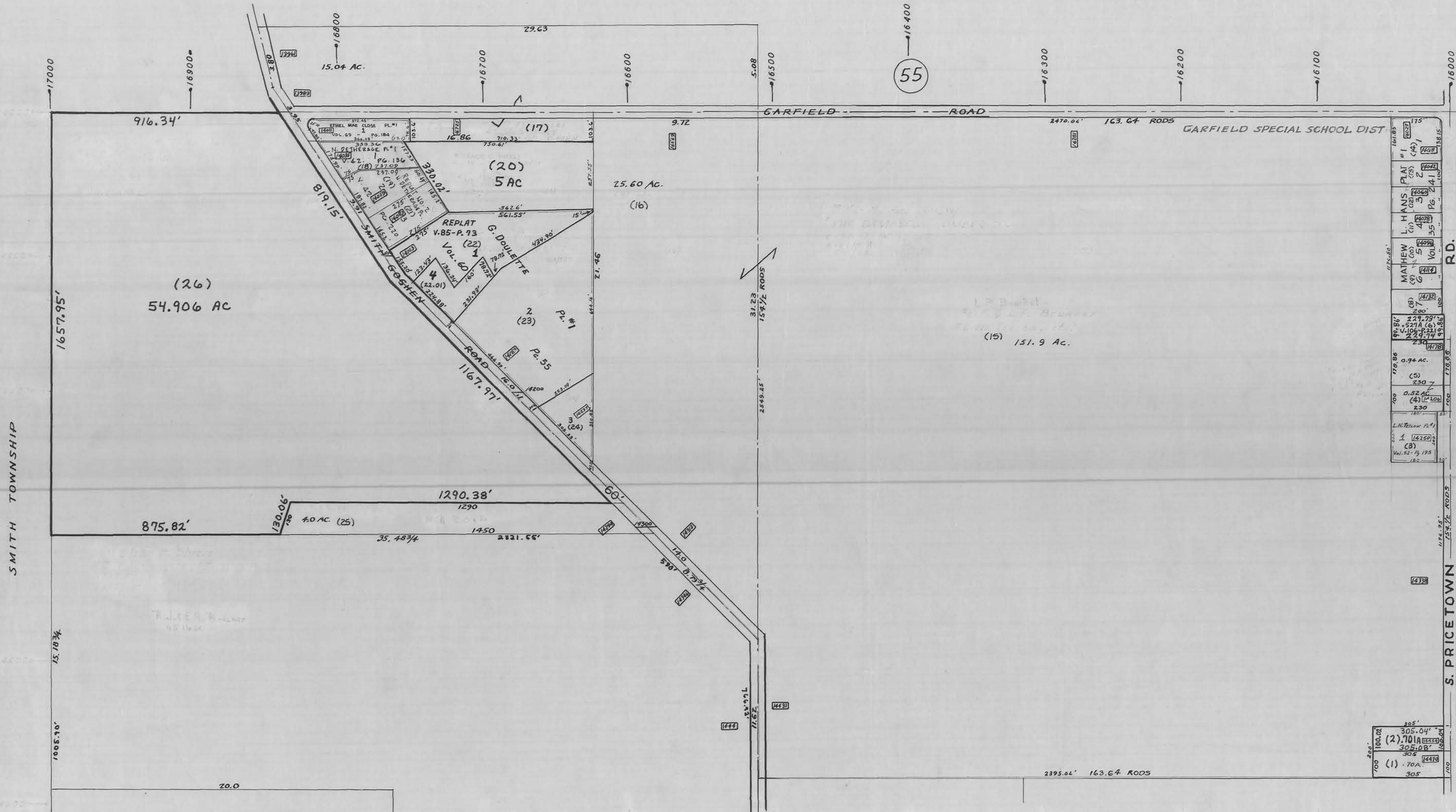


GOSHEN TOWNSHIP

OFFICE OF COUNTY ENGINEER
MAHONING COUNTY COURT HOUSE
YOUNGSTOWN, OHIO



GIS Department
Scanned 7-12-04

SCALE 1" = 200'

51

- LEGEND
- (44) PLATE NUMBER
 - 1300 HOUSE NUMBERING GRID
 - [4202] HOUSE NUMBER
 - (2) OR (2.2) PERMANENT PARCEL NO.

| | | | |
|------|---------|----------|--------|
| 305' | 305.04' | (2) 701A | [4470] |
| 305' | 305.08' | (1) 70A | [4470] |
| 305' | 305' | | |