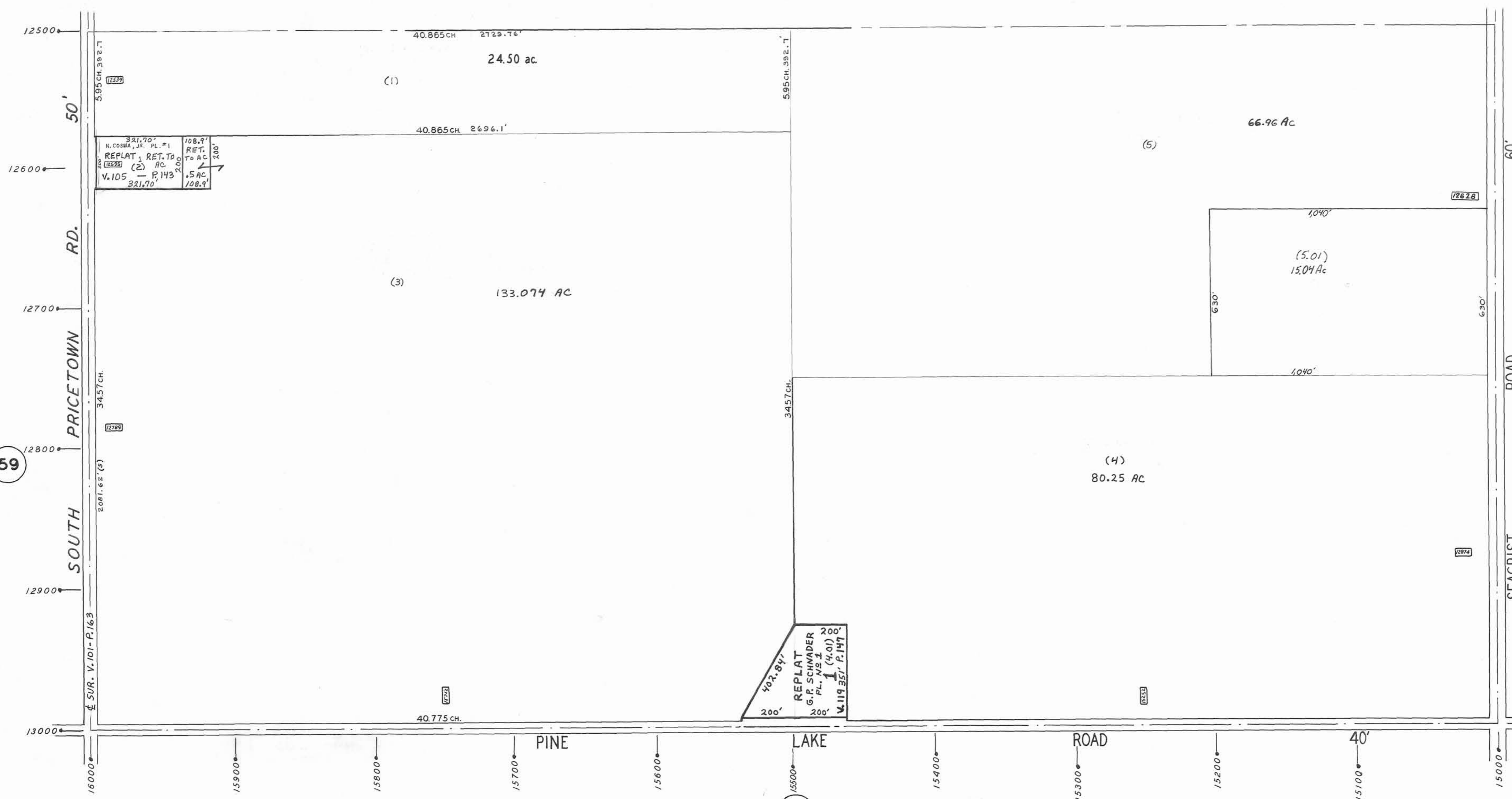
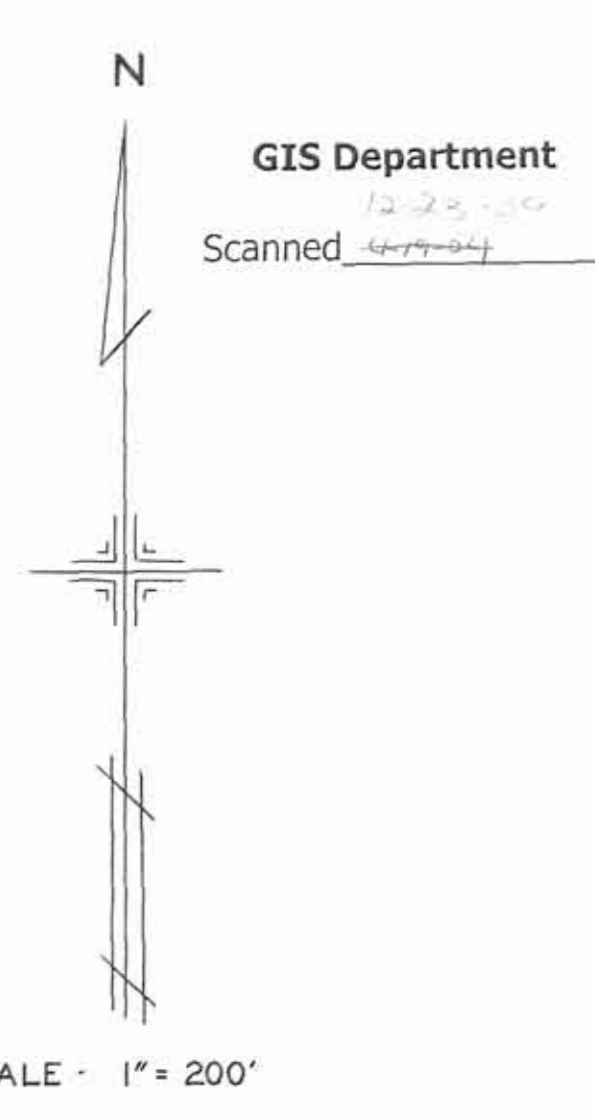


47



321.70'  
N. COSMA, JR. PL. #1  
REPLAT 1 RET. TO  
108.9'  
TO AC  
(2) AC  
2.00'  
V. 105 - P. 143  
321.70' 108.9'

402.84'  
200'  
REPLAT  
G.P. SCHWADER  
P.L. 149  
V. 119  
119.35' (4.01)  
P. 147



- 35
- LEGEND
- 44 PLATE NUMBER
  - 4300 HOUSE NUMBERING GRID
  - 4202 HOUSE NUMBER
  - (2) OR (2.2) PERMANENT PARCEL NO.

49