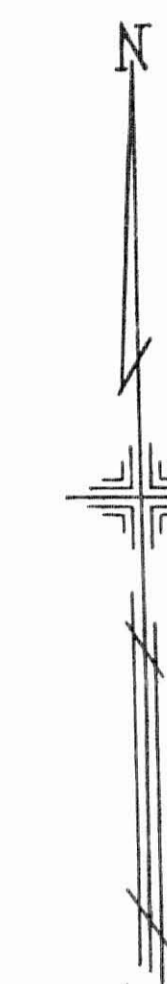


PLATE 23

SECTION No. 22  
NORTH HALF

GOSHEN TOWNSHIP

OFFICE OF COUNTY ENGINEER  
MAHONING COUNTY COURT HOUSE  
YOUNGSTOWN, OHIO



SCALE 200=1"

10

GIS Department  
Scanned 1-16-04

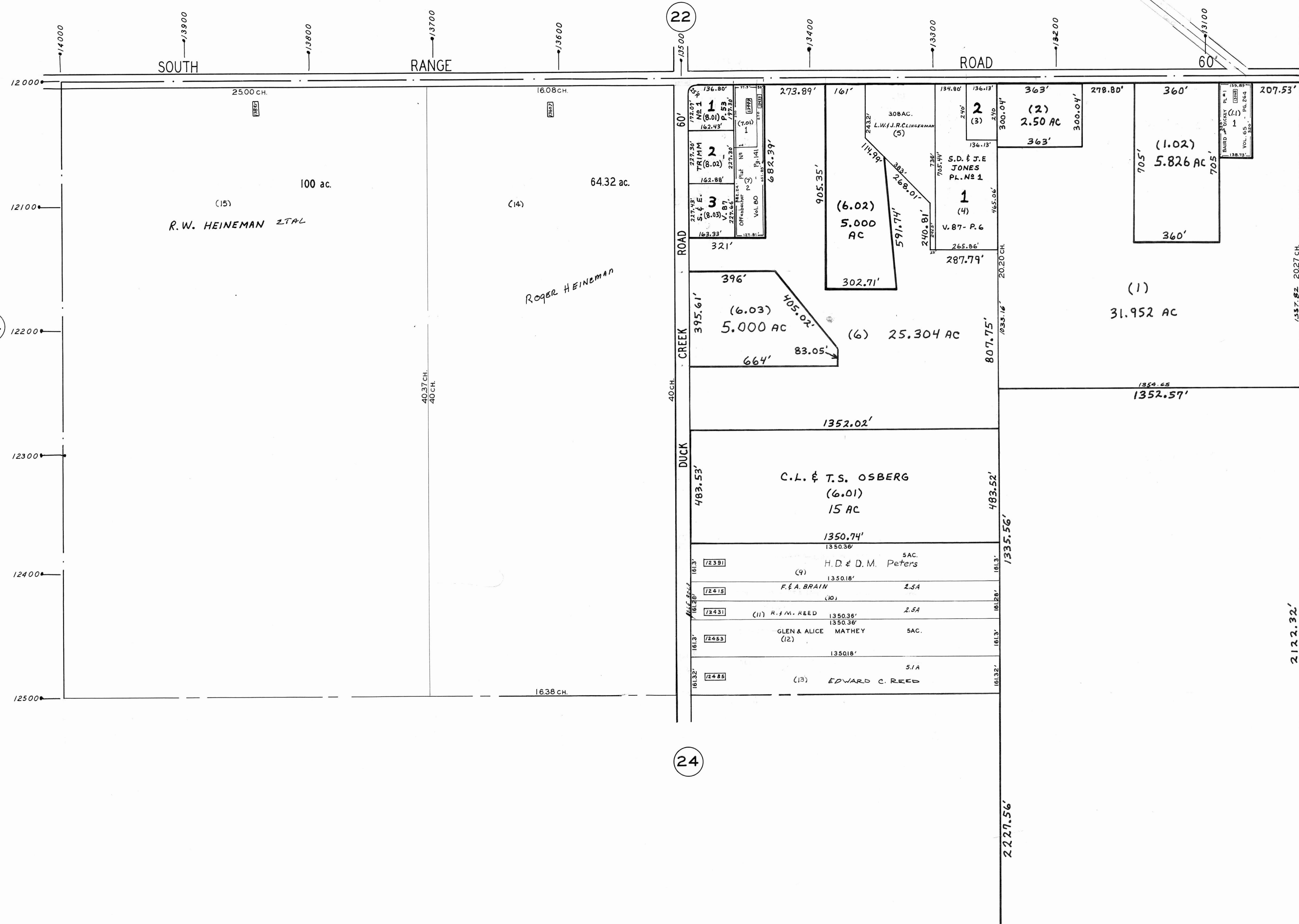
LEGEND

44 PLATE NUMBER

→ 1300 HOUSE NUMBERING GRID

9202 HOUSE NUMBER

(2) OR (2.2) PERMANENT PARCEL NO.



22

24

34

2122.32'

2227.56'

357.29'

694.38'