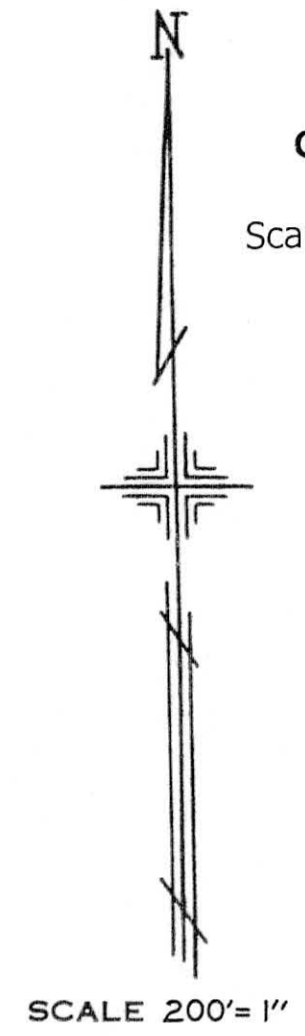


**PLATE 20**  
SECTION No. **10**  
SOUTH HALF  
**GOSHEN TOWNSHIP**

OFFICE OF COUNTY ENGINEER  
MAHONING COUNTY COURT HOUSE  
YOUNGSTOWN, OHIO

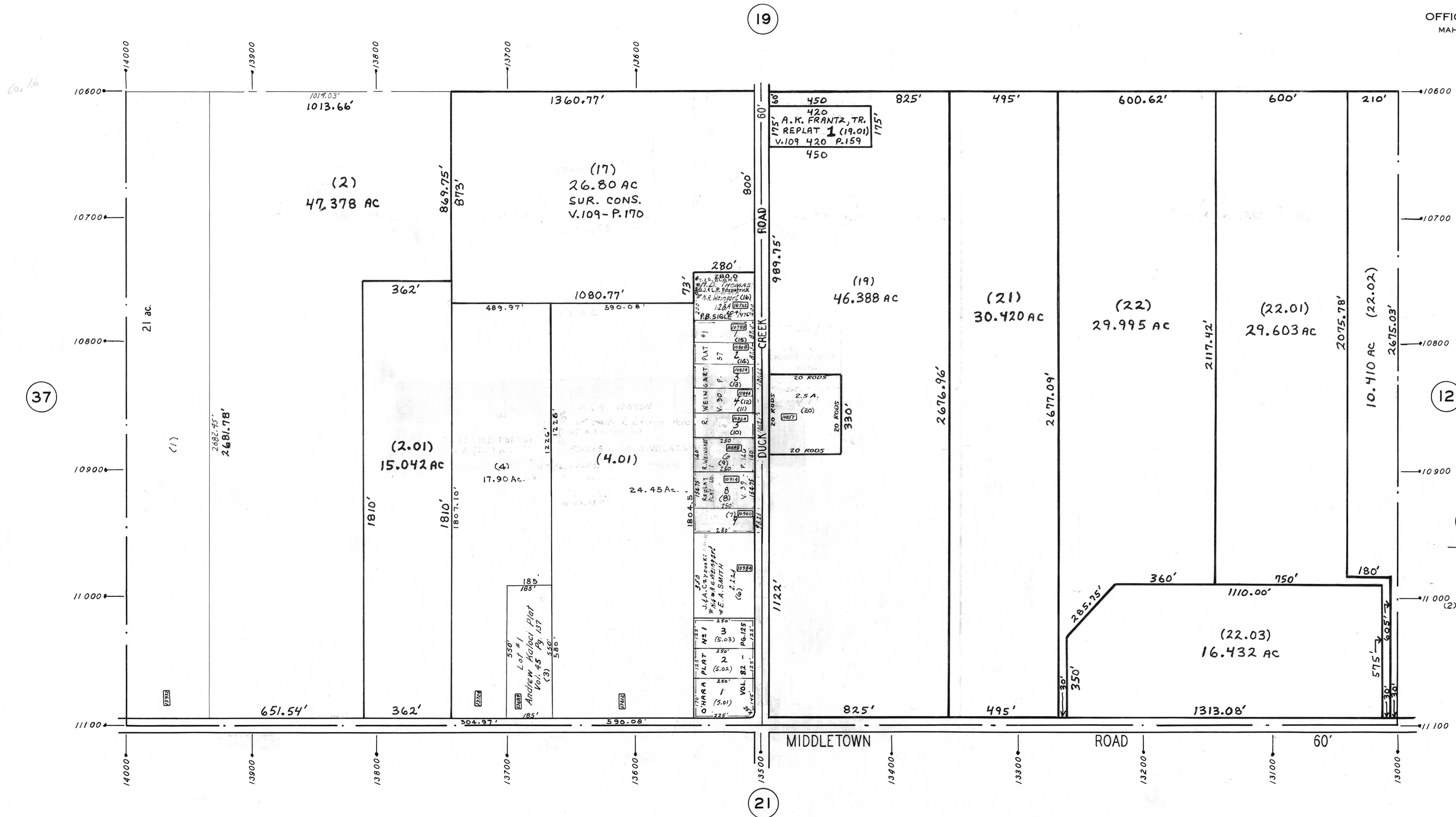
GIS Department  
12-7-05  
Scanned \_\_\_\_\_



SCALE 200' = 1"

**LEGEND**

- (44) PLATE NUMBER
- ←4300 HOUSE NUMBERING GRID
- 7202 HOUSE NUMBER
- (2) OR (2.2) PERMANENT PARCEL NO.



(19)

(37)

(12)

(21)