

PLATE 2
SECTION No. 1
SOUTH HALF
GOSHEN TOWNSHIP

OFFICE OF COUNTY ENGINEER
MAHONING COUNTY COURT HOUSE
YOUNGSTOWN, OHIO



SCALE 200' = 1"

LEGEND

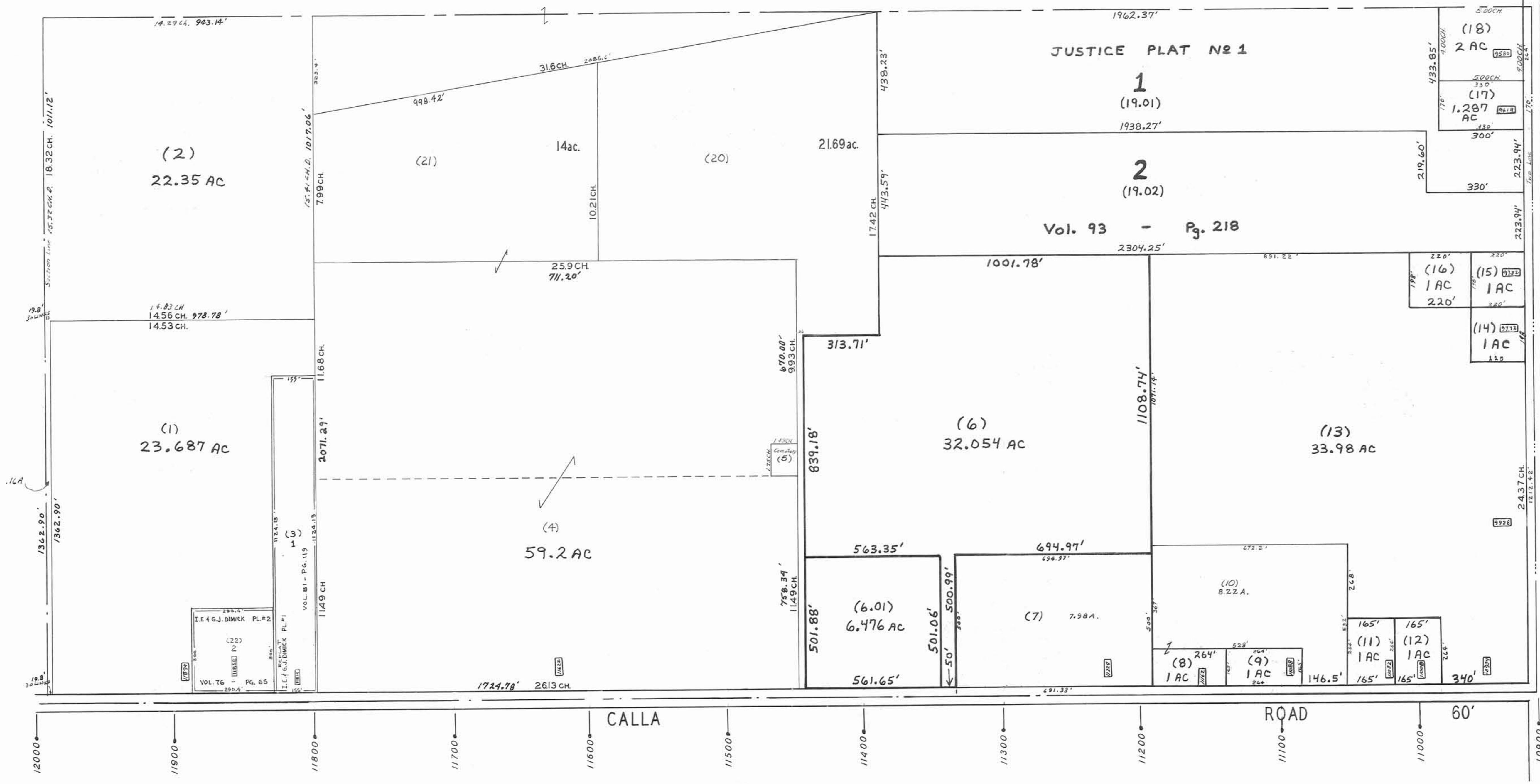
- 44 PLATE NUMBER
- 4300 HOUSE NUMBERING GRID
- 4202 HOUSE NUMBER
- (2)OR(2.2) PERMANENT PARCEL NO.

GIS Department
Scanner
6/16/09

15

1

3



60' → 9600
ROAD → 9700
WARREN TWP. GREEN ROAD → 9800
60' → 9900
SALEM ROAD → 10000
60' → 10100