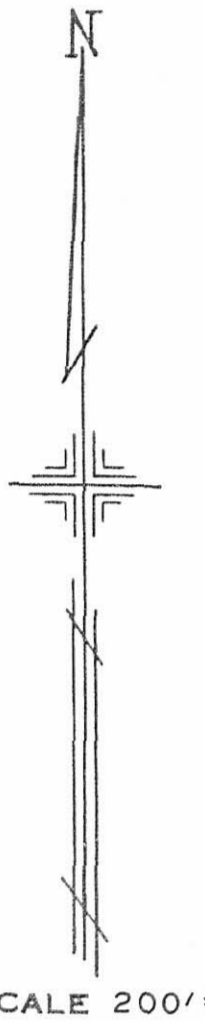
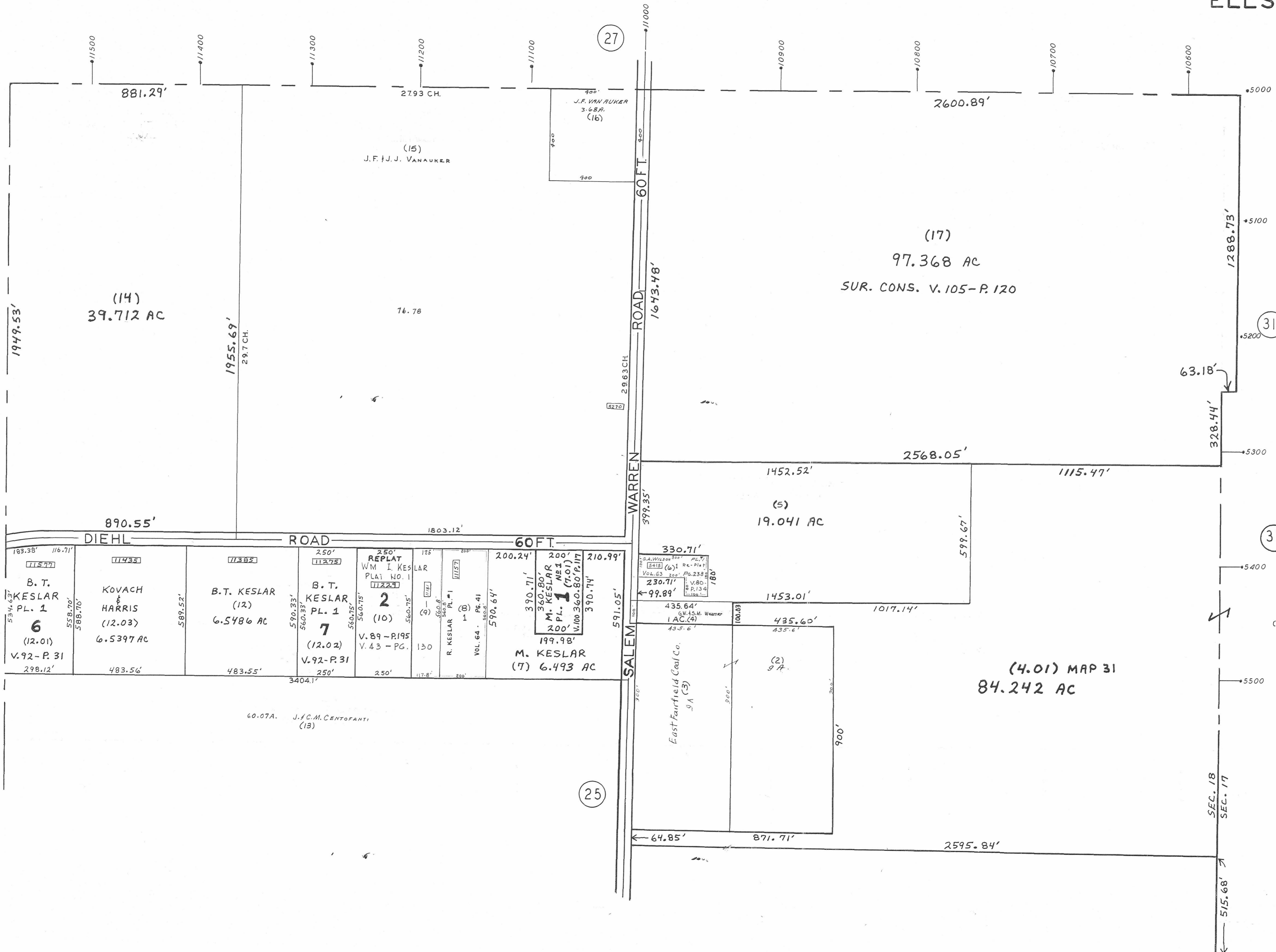


ELLSWORTH TOWNSHIP

OFFICE OF COUNTY ENGINEER
MAHONING COUNTY COURT HOUSE
YOUNGSTOWN, OHIO



13



31 INDICATES PLATE NUMBER

- 4700 HOUSE NUMBERING GRID
- 4170 HOUSE NUMBER
- (2) OR (2.2) PERMANENT PARCEL NO.

GIS Department
Scanned 1-5-2004

25

27

31

183.38' 116.71'	11377	11385	250' 11295	250' REPLAT WM I. KESLAR PLAT NO. 1 11229	125'	200.24'	200' 330.71'	210.99'
B. T. KESLAR PL. 1 6 (12.01) V. 92 - P. 31 298.12'	KOVACH & HARRIS (12.03) 6.5397 AC 483.56'	B. T. KESLAR (12) 6.5486 AC 483.55'	B. T. KESLAR PL. 1 7 (12.02) V. 92 - P. 31 250'	REPLAT WM I. KESLAR PLAT NO. 1 11229 V. 89 - P. 195 V. 43 - PG. 130	R. KESLAR PL. #1 1 (B) VOL. 64 - PG. 41 590.64'	M. KESLAR PL. #1 1 (7.01) 199.98' 6.493 AC	M. KESLAR PL. #1 1 (7.01) 200' V. 100 - P. 80 - P. 117 390.74'	330.71' 230.71' 99.89'