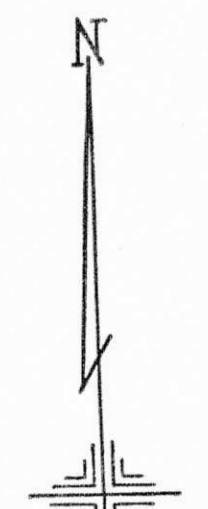


PLATE 161

SECTION No. 29

BEAVER TWP.

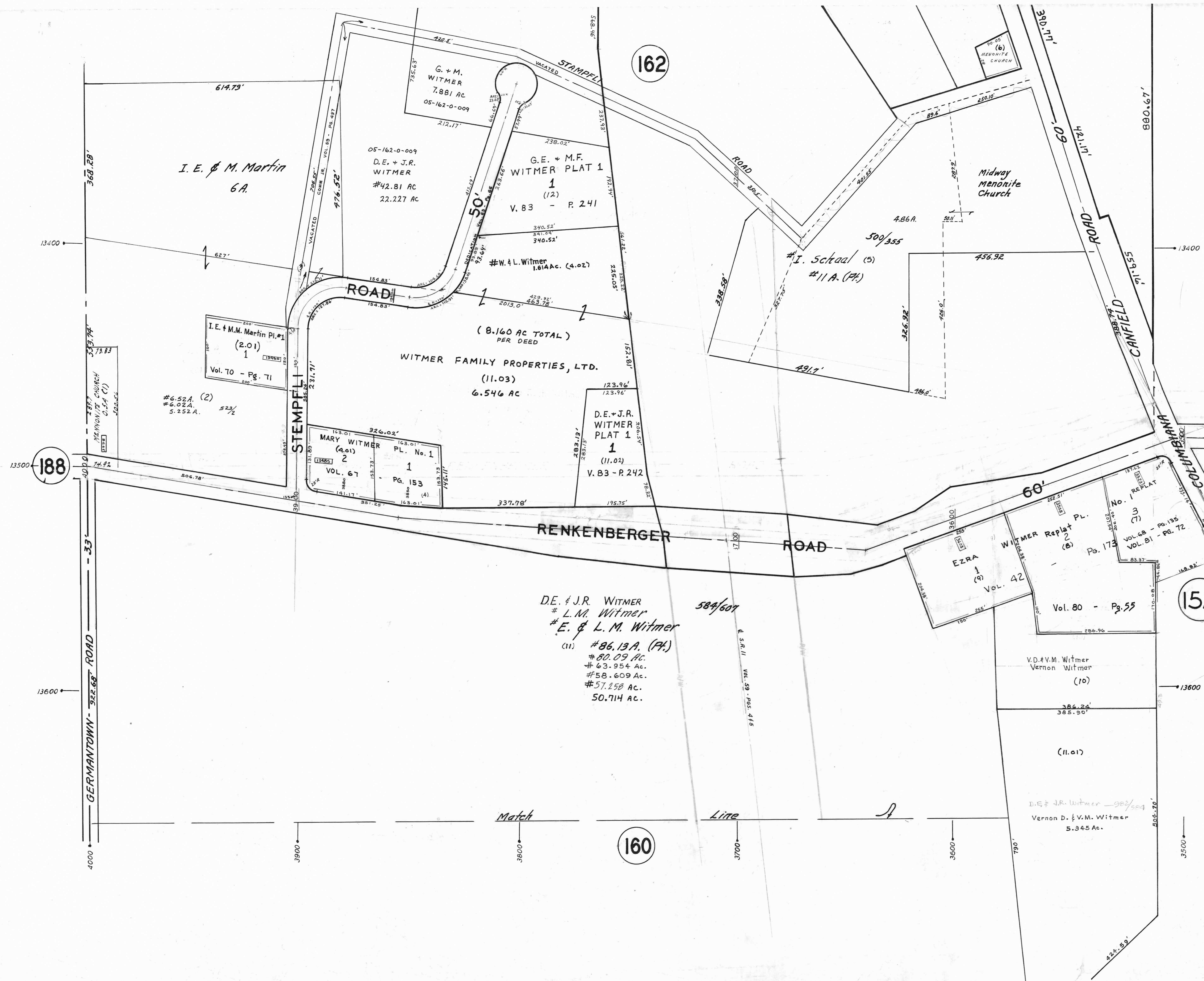
OFFICE OF COUNTY ENGINEER
MAHONING COUNTY COURT HOUSE
YOUNGSTOWN, OHIO



SCALE
1" = 100'

LEGEND

- (161) PLATE NUMBER
- 4700 HOUSE NUMBERING GRID
- 4170 HOUSE NUMBER
- (2) OR (2.2) PERMANENT PARCEL NO.



162

188

152

160

DE. & J.R. WITMER
L.M. Witmer
E. & L.M. Witmer
(11) #86.13 A. (77.)
#80.09 Ac.
#63.954 Ac.
#58.609 Ac.
#57.258 Ac.
50.714 Ac.

584/607

Match

Line

GERMANTOWN ROAD - 322.68'

RENKENBERGER ROAD

60'

WITMER Replat (6)

EZRA (9) VOL. 42

Vol. 80 - Pg. 55

V.D. & V.M. Witmer Vernon Witmer (10)

(11.01)

D.E. & J.R. Witmer - 982/554
Vernon D. & V.M. Witmer 5.345 Ac.

I. E. & M. Martin 6A.

I.E. & M.M. Martin Pl. #1 (2.01) 1
Vol. 70 - Pg. 71

#6.52 A. (2)
#6.02 A.
5.252 A.

MARY WITMER PL. No. 1 (4.01) 2
VOL. 67 - PG. 153

G.E. & M.F. WITMER PLAT 1 (12) V. 83 - P. 241

D.E. & J.R. WITMER #42.81 AC 22.227 AC

WITMER FAMILY PROPERTIES, LTD. (11.03) 6.546 AC

D.E. & J.R. WITMER PLAT 1 (11.02) V. 83 - P. 242

G. & M. WITMER 7.881 AC 05-162-0-009

Midway Menonite Church

I. School (5) #11 A. (77)

500/355

3700

3600

3500

13400

13400

13500

13600

13600

3500

3500