

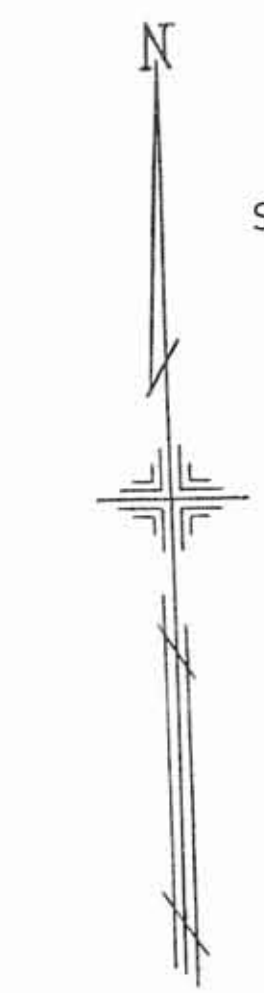
PLATE 149

SECTION No. 20

BEAVER TWP.



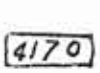
OFFICE OF COUNTY ENGINEER
MAHONING COUNTY COURT HOUSE
YOUNGSTOWN, OHIO

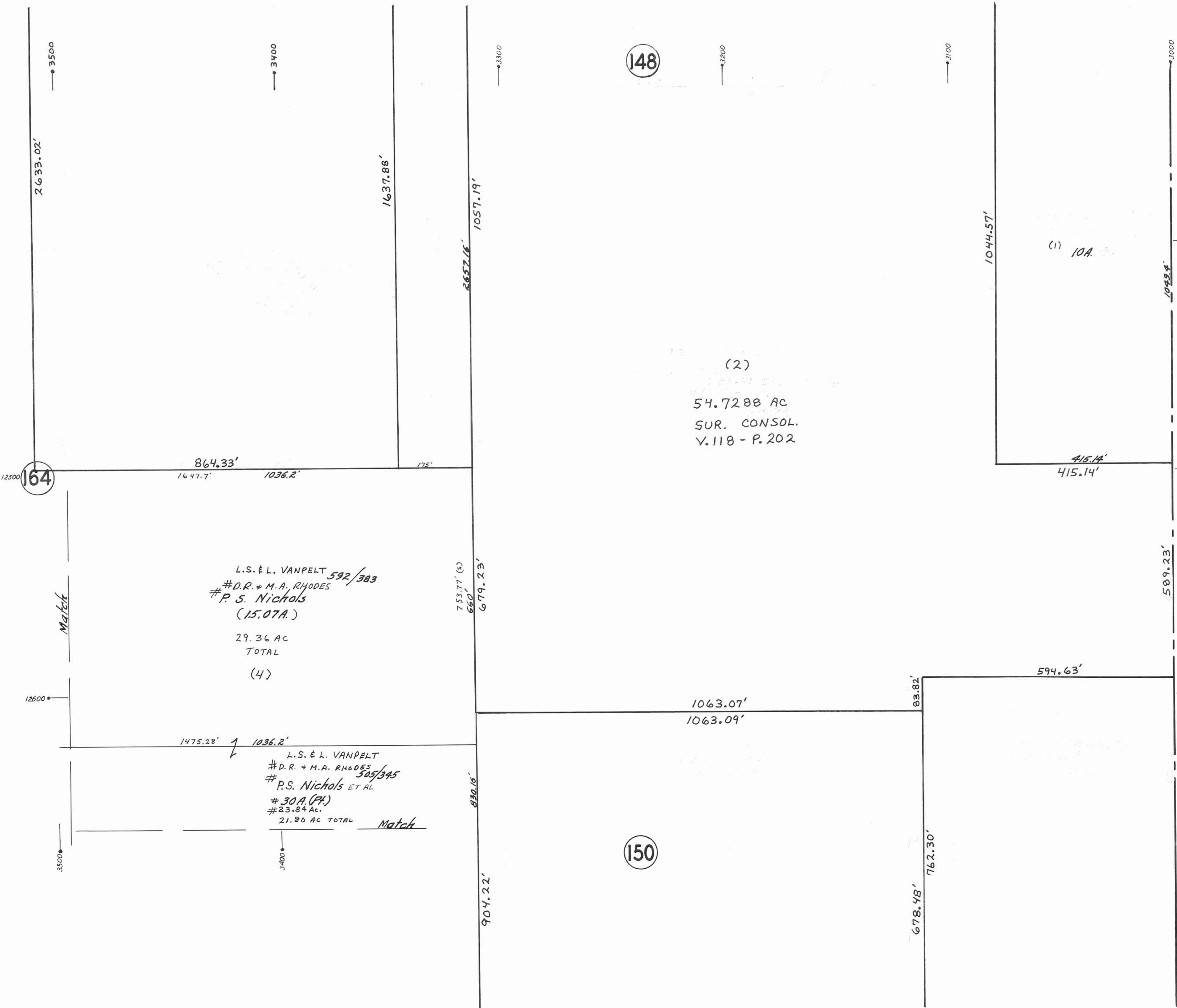
GIS Department
Scanned 5/10/09



SCALE
1" = 100'

LEGEND

-  PLATE NUMBER
-  HOUSE NUMBERING GRID
-  HOUSE NUMBER
- (2) OR (2.2) PERMANENT PARCEL NO.



148

150

128

(1) 10A

(2)
54.7288 AC
SUR. CONSOL.
V. 118 - P. 202

L.S. & L. VANPELT 592/383
#D.R. & M.A. RHODES
#P.S. Nichols
(15.07A.)
29.36 AC
TOTAL
(4)

L.S. & L. VANPELT
#D.R. & M.A. RHODES 505/345
#P.S. Nichols ET AL
#30A (P)
#23.84 AC.
21.86 AC TOTAL
Match

3500
2633.02'

3400

3300

3200

3100

3000

12500
164

12500
128

12600

12600

Match

Match

3500

3400

904.22'

678.48'

762.30'

864.33'
1647.7' 1036.2'

1475.28' 1036.2'

1637.88'

1057.19'

2657.16'

753.77' (S)
660' 679.23'

830.16'

1063.07'
1063.09'

1044.57'

415.14'
415.14'

594.63'

12400

12500

12600